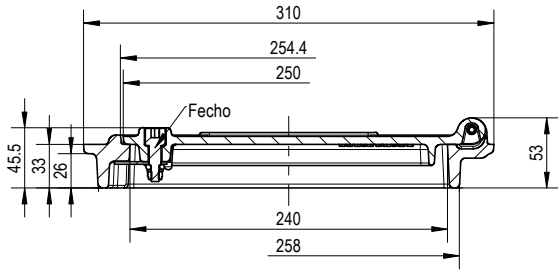
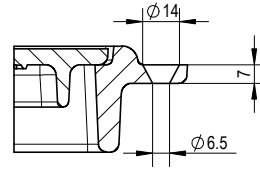


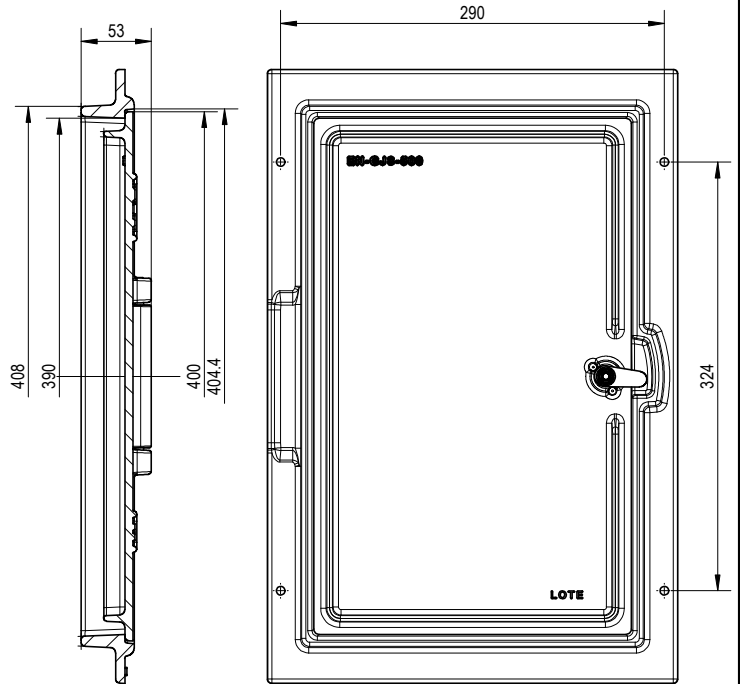
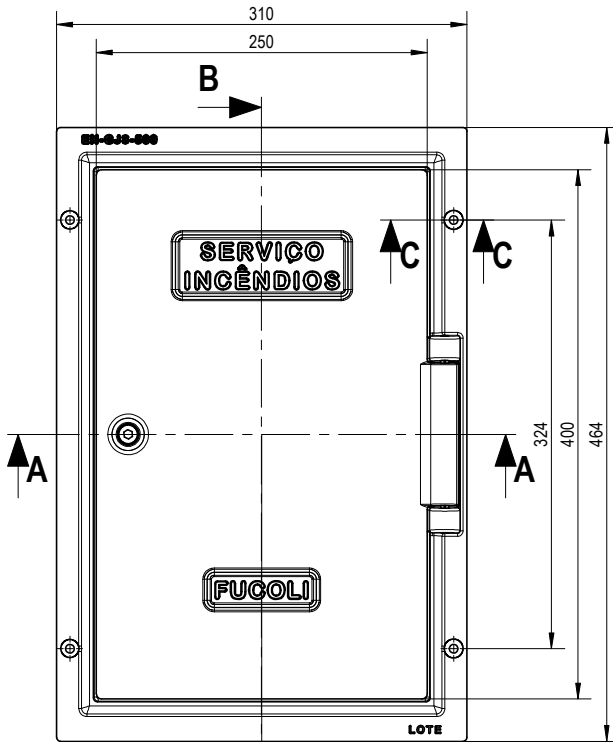
A-A



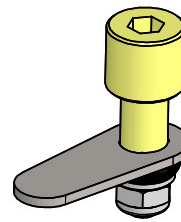
C-C



B-B



B



Promenor do Fecho

ARO **5,2** kg (cód.106.09.112)

PESO APROX. FECHO **0,1** kg (cód.106.03.013)

TAMPA **5,2** kg (cód.106.09.111)

	DATA	RÚBRICA	MATERIAL	
DESENHO	18/09/2015		FERRO FUNDIDO NODULAR (DÚCTIL)	 Fucoli - Somepal <small>FABRIL DO FERRO, S.A.</small>
APROVOU	18/09/2015			
ESCALA	DESIGNAÇÃO			106.09.110INC <small>REV. Nº 1 FOLHA 1 DE 1</small> <small>SUBSTITUI REV. 0</small> <small>SUBSTITUIDO POR</small>
	PORTINHOLA RECTANGULAR 462x310 N			
TOLER. ISO 8062 CT 9				