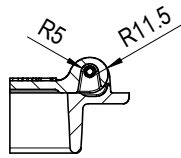
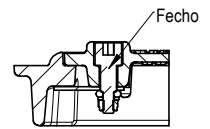


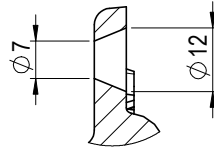
B-B



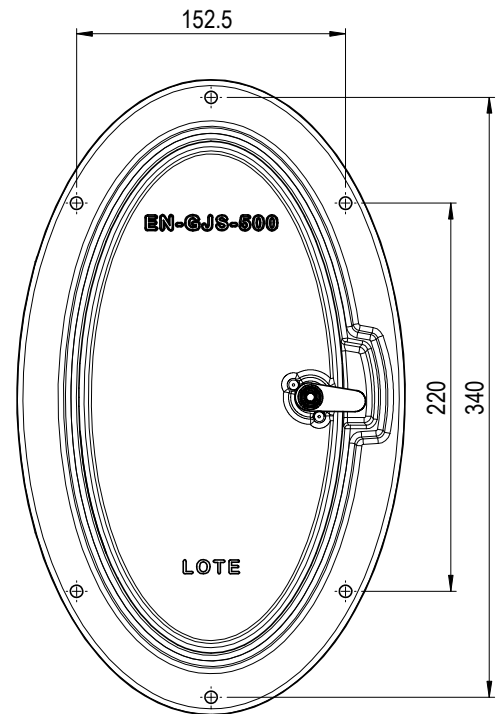
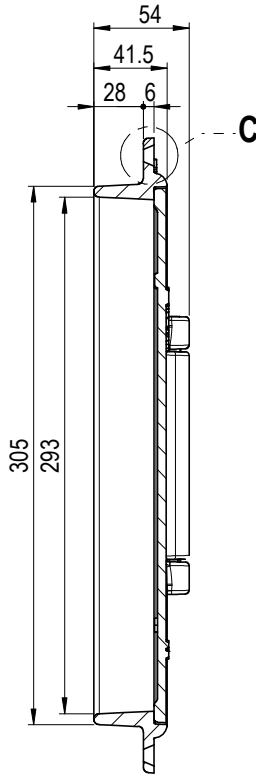
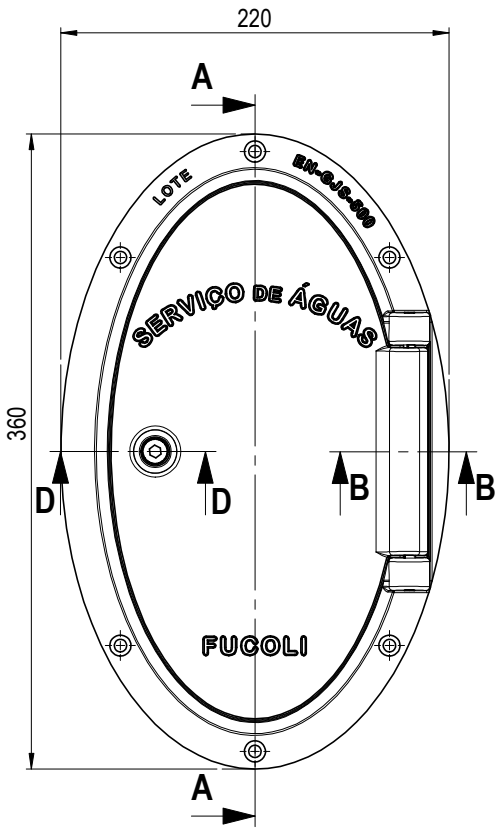
D-D



C



A-A



ARO **2,6** kg (cód.106.05.011)

PESO APROX. FECHO **0,1** kg (cód.106.06.013)

TAMPA **1,7** kg (cód.106.05.012)

	DATA	RÚBRICA	MATERIAL			
DESENHOU	21/09/2015		FERRO FUNDIDO NODULAR (DÚCTIL)	 Fucoli - Somepal <small>FABRICADOR DE FERRO, S.R.L.</small>		
APROVOU	21/09/2015					
ESCALA	DESIGNAÇÃO			DESENHO Nº		
—	PORTINHOLA OVAL N "SERVIÇO ÁGUAS"			106.05.010 SA		
TOLER.				ISO 8062 CT 9	REV. Nº 2	FOLHA 1 DE 1
					SUBSTITUI REV. 1	SUBSTITUIDO POR