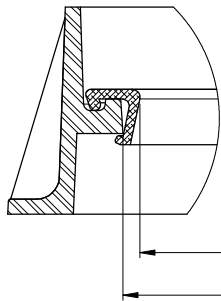
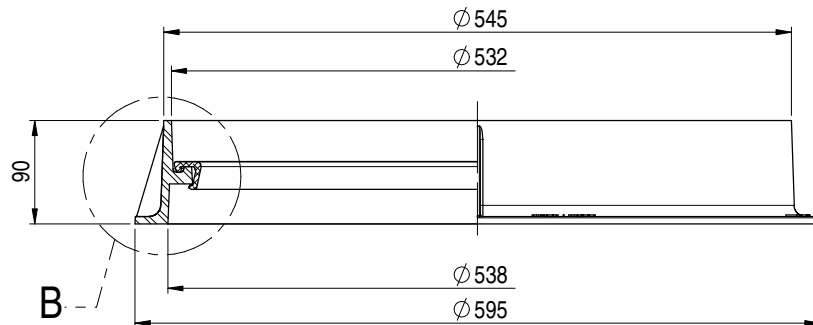
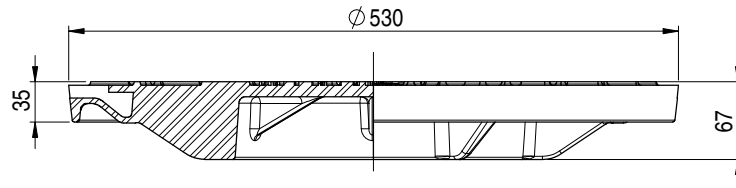
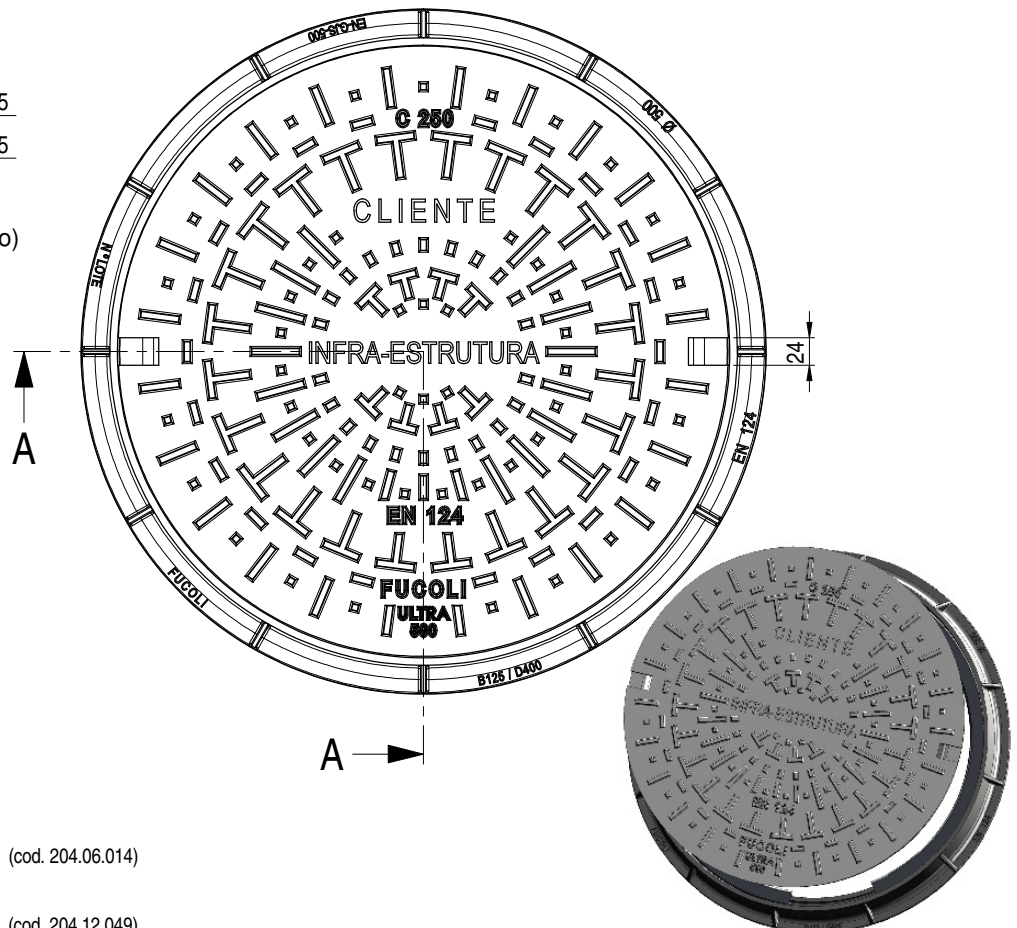


A-A



PORMENOR - B  
(Apoio Elástico em Polietileno)




TAMPA 25,2 Kg (cod. 204.06.014)

PESO APROX. ARO 13,8 Kg (cod. 204.12.049)

APOIO 0,2 Kg (cod. MA134)

RELEVO TAMPA: 10 %

COTA DE PASSAGEM: 495 mm

	DATA	RÚBRICA	MATERIAL	
DESENHOU	18/10/2017	Sandra Perdigão	FERRO FUNDIDO NODULAR (DÚCTIL)	
APROVOU	18/10/2017			
ESCALA	DESIGNAÇÃO			DESENHO Nº
	TAMPA+ARO ALTO RED. 50 C250 N ULTRA			<b>204.06.024</b>
TOLER. ISO 8062 CT 9				REV. Nº 5   FOLHA 1 DE 1
				SUBSTITUI REV. 4
				SUBSTITUIDO POR