

# ROUND MANHOLE COVER SERIES ESTANQUE D400

12.105



## Product description

- Round manhole cover series ESTANQUE
- Water based black painting

## Installation location

- Class D400 - Carriageways of roads (including pedestrian streets), hard shoulders and parking areas for all types of road vehicles

## Standards

- Designed according to EN 124-1/2

## Certifications

- Certificate Certif "D400" DDA - 007/2021

## Features

- Ductile cast iron cover and frame (EN-GJS-500-7) with water based black painting
- Cover with non-slip raised pattern according to EN 124-1 designed to allow quick and easy installation
- Cover with a robust conception
- Cover with two lifting points for easy operation/handling
- Elastic seating which assures the cover perfectly fits the frame and also gives stability and silent operating even in high traffic intensity
- O-ring seal that makes the watertight at 3 bar
- Available in 2 models:
  - A. Series Estanque 600 is supplied with 6 hexagonal bolts for fixing the cover to the frame
  - B. Series Estanque 600 with [P-I] is supplied with 4 hexagonal bolts, plus 2 inviolable bolts that work as an anti-theft system
- All screws are protected by a protective cover
- Personalization of the cover with inscriptions and logo in high relief with minimal quantities.



100% MADE IN EUROPE



**Fucoli Somepal**  
FUNDAÇÃO DE FERRO, S. A.

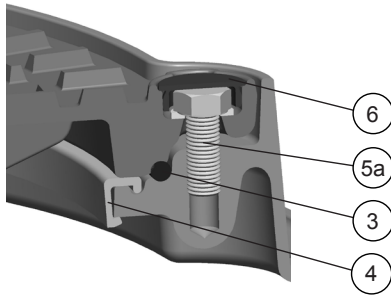
Visit our website at [www.fucoli-somepal.pt](http://www.fucoli-somepal.pt)

**Head office:** Estrada de Coselhas, 3000-125 Coimbra – Portugal | Tel.: (+351) 239 490100 | Fax: (+351) 239 490198

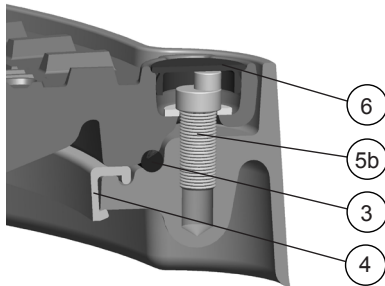
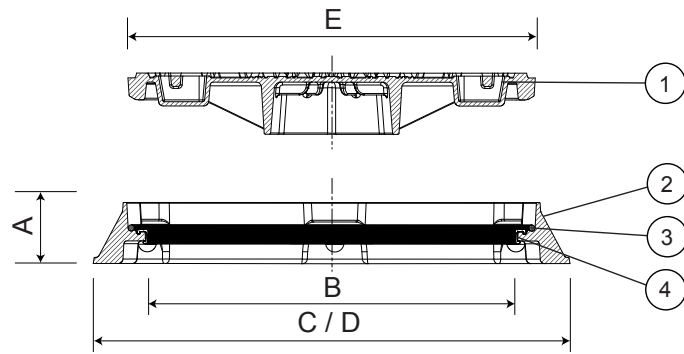
**Branch office:** Rua de Aveiro 50, 3050-420 Pampilhosa – Portugal | Tel.: (+351) 239 490100 | Fax: (+351) 231 949292 | [comercial@fucoli-somepal.pt](mailto:comercial@fucoli-somepal.pt)

# ROUND MANHOLE COVER SERIES ESTANQUE D400

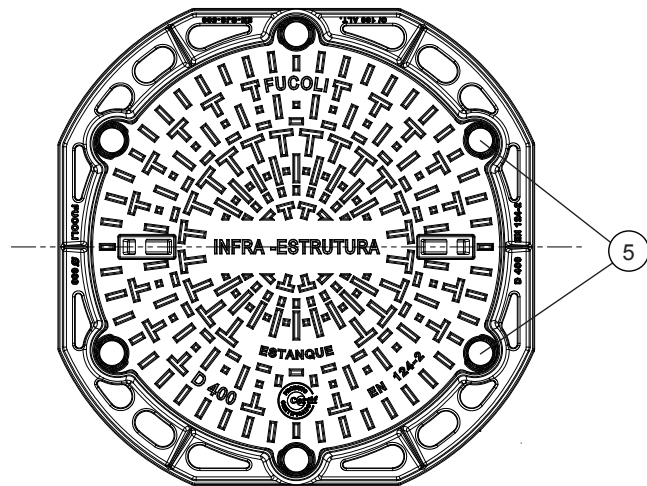
12.105



Detail of stainless steel A2 screw



Detail of inviolable stainless steel A2 screw [P-I]



## Component list

pos.	components	material	standard
1	Cover	Ductile iron EN-GJS-500-7	EN 1563
2	Frame	Ductile iron EN-GJS-500-7	EN 1563
3	O-ring	Elastomer NBR	EN 681 - 1
4	Elastic seating anti-noise	Flexible PVC	-
5a	Bolt	Stainless steel A2	EN 10088 - 1
5b	Inviolable bolt	Stainless steel A2	EN 10088 - 1
6	Protection cap	Polyethylene (PE-LD)	-

## Reference and dimensions

Model - DN - Class	code	Frame				Cover	Weight	
		height	clear opening	ø external	ø ext. with stone-bolt	ø external	Cover kg	Total kg
		A	B	C	D	E	approx.	approx.
Estanque 600 - D400	24B1CI4QNIBZZZZ00NB	100	600	850	850	650	46	74
Estanque 600 - D400 with [P-I]	24B1CI4QNIBZZZZ00OB	100	600	850	850	650	46	74



**Fucoli Somepal**  
FUNDAÇÃO DE FERRO, S.A.

Visit our website at [www.fucoli-somepal.pt](http://www.fucoli-somepal.pt)

Head office: Estrada de Coselhas, 3000-125 Coimbra – Portugal | Tel.: (+351) 239 490100 | Fax: (+351) 239 490198

Branch office: Rua de Aveiro 50, 3050-420 Pampilhosa – Portugal | Tel.: (+351) 239 490100 | Fax: (+351) 231 949292 | [comercial@fucoli-somepal.pt](mailto:comercial@fucoli-somepal.pt)

