

TRIANGULAR MANHOLE COVER

SERIES NR

D400

12.300



Product description

- Triangular manhole cover series NR
- Water based black painting

Installation location

- Class D400 - Carriageways of roads (including pedestrian streets), hard shoulders and parking areas for all types of road vehicles

Standards

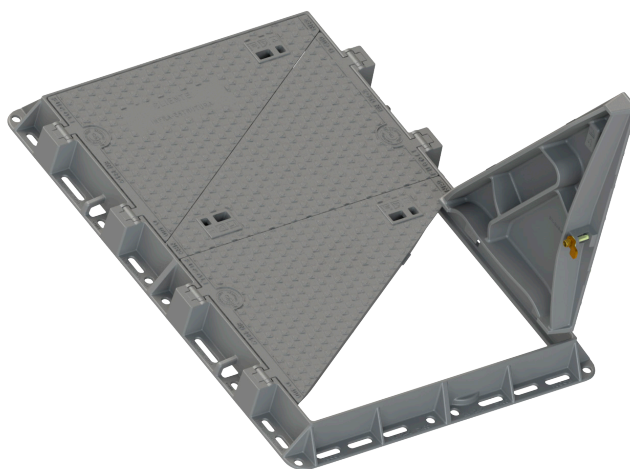
- Designed according to EN 124-1/2

Certifications

- Certificate Certif DDA - 002/2024

Features

- This model is used in telecommunications networks and in situations where wide and easy access to the manhole is required
- Approved by the main telecommunications operators
- Available in 2 models:
 - A. Articulated model:
 - Ductile cast iron cover and frame (EN-GJS-500-7) with water based black painting
 - Frame with lifting points and stone-balls for fixation
 - Each cover/ triangle has two hinge system with self-cleaning system, simply opening of the manhole at 110° and safety 90° blocking system. Fit and remove is making through moving the cover to 90° and lift clear
 - The cover have a local to install an additional security lock. This lock may be conventional or inviolable and can be installed at any moment
 - Cover with non-slip raised pattern according to EN 124-1 designed to allow quick and easy installation
 - Nº 1 cover customization with inscriptions and logo in high relief with minimal quantities
 - B. Non-articulated model:
 - Ductile cast iron cover (EN-GJS-500-7) and steel zinc frame
 - Cover NR1 D400 has a local to install an additional security lock. This lock may be conventional or inviolable and can be installed at any moment
 - Cover with non-slip raised pattern according to EN 124-1 designed to allow quick and easy installation
 - Cover designed with a tripod system that guarantees stability and anti-noise
 - Cover with two lifting points for easy operation/handling
 - Personalization of the cover with inscriptions and logo in high relief with minimal quantities.



Fucoli-Somepal
FUNDIÇÃO DE FERRO, S.A.

Visit our website at www.fucoli-somepal.pt

Head office: Estrada de Coselhas, 3000-125 Coimbra – Portugal | Tel.: (+351) 239 490100 | Fax: (+351) 239 490198

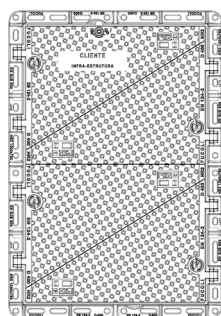
Branch office: Rua de Aveiro 50, 3050-420 Pampilhosa – Portugal | Tel.: (+351) 239 490100 | Fax: (+351) 231 949292 | comercial@fucoli-somepal.pt

TRIANGULAR MANHOLE COVER SERIES NR D400

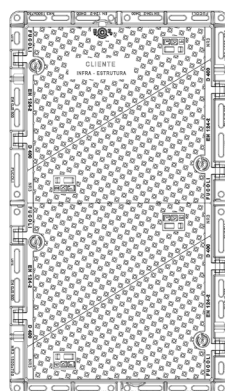
12.300



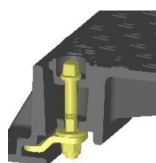
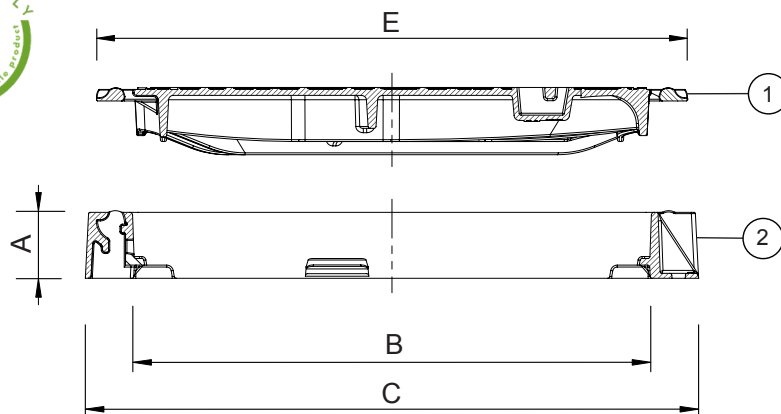
A. Articulated model



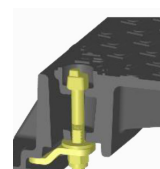
NR2



NR3



3a Conventional additional security lock [F-S]



3b Inviolable additional security lock [F-S-I]

Component list

| pos. | components | material | standard |
|------|----------------------------|---------------------------|----------|
| 1 | Cover | Ductile iron EN-GJS-500-7 | EN 1563 |
| 2 | Frame | Ductile iron EN-GJS-500-7 | EN 1563 |
| 3a | Conventional security lock | Zinco 8.8 | - |
| 3b | Inviolable security lock | Zinco 8.8 | - |

Reference and dimensions

Subtitle:
[F-S] - Conventional security lock
[F-S-I] - Inviolable security lock

| Model - Class | code | [F-S] | [F-S-I] | Frame | | | Cover | Weight | |
|-------------------|---------------------|-------|---------|-------------------|-----------------------------|------------------------------------|---------------------|------------------------|------------------------|
| | | | | height mm A | clear opening mm B | ext. with stone-bolt mm C | external mm E | Cover kg approx. | Total kg approx. |
| NR2 hinged - D400 | 24E1EQ4NAIBZZZZ00AA | | | 100 | 1200 x 750 | 1340 x 930 | (4) 783 x 535 | (4) 34.1 | 197 |
| NR2 hinged - D400 | 24E1EQ4NAIBZZZZ00CA | • | | 100 | 1200 x 750 | 1340 x 930 | (4) 783 x 535 | (4) 34.1 | 197 |
| NR2 hinged - D400 | 24E1EQ4NAIBZZZZ00DA | | • | 100 | 1200 x 750 | 1340 x 930 | (4) 783 x 535 | (4) 34.1 | 197 |
| NR3 hinged - D400 | 24E1FU4NAIBZZZZ00AA | | | 100 | 1500 x 750 | 1640 x 930 | (4) 783 x 609 | (4) 37.3 | 220 |
| NR3 hinged - D400 | 24E1FU4NAIBZZZZ00CA | • | | 100 | 1500 x 750 | 1640 x 930 | (4) 783 x 609 | (4) 37.3 | 220 |
| NR3 hinged - D400 | 24E1FU4NAIBZZZZ00DA | | • | 100 | 1500 x 750 | 1640 x 930 | (4) 783 x 609 | (4) 37.3 | 220 |

continued on next page

TRIANGULAR MANHOLE COVER

SERIES NR

D400

12.300

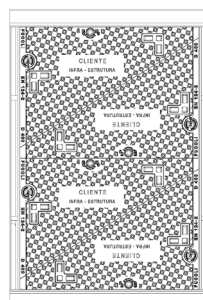


continued from previous page

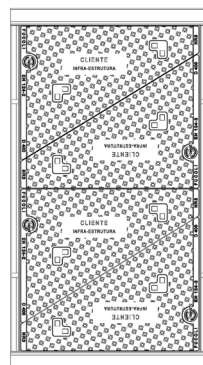
B. Non-articulated model



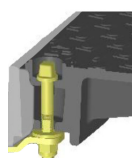
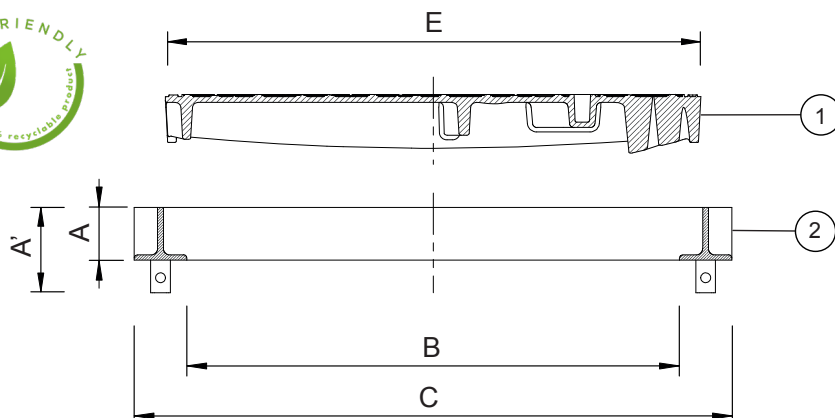
NR1



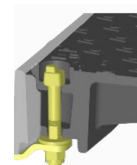
NR2



NR3

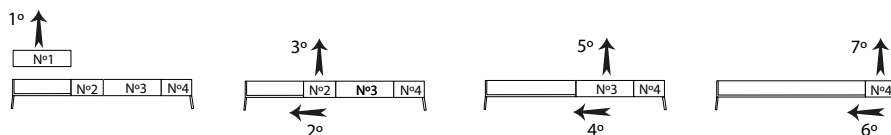


3a Conventional additional security lock [F-S]



3b Inviolable additional security lock [F-S-I]

Handling sequence



Component list

| pos. | components | material | standard |
|------|----------------------------|---------------------------|----------|
| 1 | Cover | Ductile iron EN-GJS-500-7 | EN 1563 |
| 2 | Frame | Steel zinc | EN 1563 |
| 3a | Conventional security lock | Zinco 8.8 | - |
| 3b | Inviolable security lock | Zinco 8.8 | - |

Reference and dimensions

| Modelo - Class | code | [F-S] | [F-S-I] | Frame | | | | Cover | Weight | |
|-----------------------|---------------------|-------|---------|--------------|---------------------------------|------------------------|-------------------------------|----------------|-------------|-------------|
| | | | | height mm | height with stone-bolt mm | clear opening mm | ext. with stone-bolt mm | external mm | Cover kg | Total kg |
| NR1 not hinged - D400 | 24E1CX4NNGFZZZZ00AA | | | 80 | 130 | 750 x 600 | 910 x 760 | (2) 816 x 535 | (2) 39.6 | 110 |
| NR1 not hinged - D400 | 24E1CX4NNGFZZZZ00CA | • | | 80 | 130 | 750 x 600 | 910 x 760 | (2) 816 x 535 | (2) 39.6 | 110 |
| NR1 not hinged - D400 | 24E1CX4NNGFZZZZ00DA | | • | 80 | 130 | 750 x 600 | 910 x 760 | (2) 816 x 535 | (2) 39.6 | 110 |
| NR2 not hinged - D400 | 24E1EQ4NNGFZZZZ00AA | | | 80 | 130 | 1200 x 750 | 1360 x 910 | (4) 816 x 535 | (4) 39.6 | 203 |
| NR3 not hinged - D400 | 24E1FU4NNGFZZZZ00AA | | | 80 | 130 | 1500 x 750 | 1660 x 910 | (4) 816 x 535 | (4) 41.3 | 216 |



Fucoli-Somepal
FUNDIÇÃO DE FERRO, S.A.

Visit our website at www.fucoli-somepal.pt

Head office: Estrada de Coselhas, 3000-125 Coimbra – Portugal | Tel.: (+351) 239 490100 | Fax: (+351) 239 490198

Branch office: Rua de Aveiro 50, 3050-420 Pampilhosa – Portugal | Tel.: (+351) 239 490100 | Fax: (+351) 231 949292 | comercial@fucoli-somepal.pt



100% MADE IN EUROPE