

DOUBLE FLANGED 22° 30' BEND

Flanged fittings

DN 50 - 1000 PN10/16/25

10.1002



Product description

- Double flanged 22° 30' bend for drinking water and neutral liquids

Standards

- Designed according to EN 545
- Flange drilling to EN 1092-2 PN10/16/25

Corrosion protection

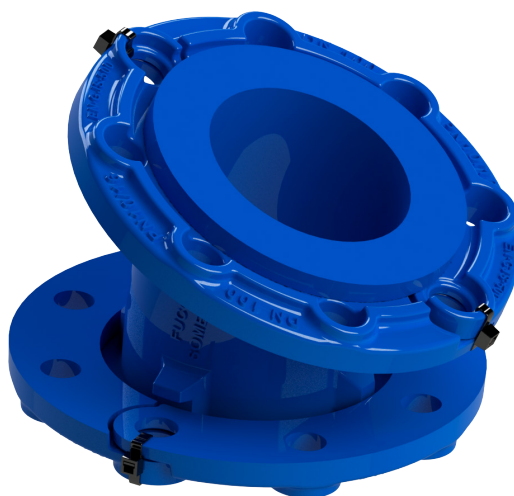
- Epoxy powder coating RAL 5005
- Applied internal and external with a minimum coating thickness of 250 µm
- Potable water approved epoxy coating fusion bonded according to EN 14901 and GSK (RAL-GZ662) guidelines

Approvals

- ACS Potability Certificate 22 ACC NY 023

Features

- Fitting approved for drinking water
- Body and flange in ductile cast iron EN-GJS-500-7
- Fast and easy to install
- Accessory with movable flanges up to DN 600 (inclusive) and fixed flanges from DN 700.



Fucoli Somepal
FUNDAÇÃO DE FERRO, S. A.

Visit our website at www.fucoli-somepal.pt

Head office: Estrada de Coselhas, 3000-125 Coimbra – Portugal | Tel.: (+351) 239 490100 | Fax: (+351) 239 490198

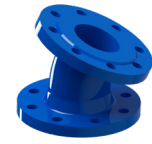
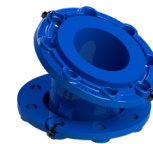
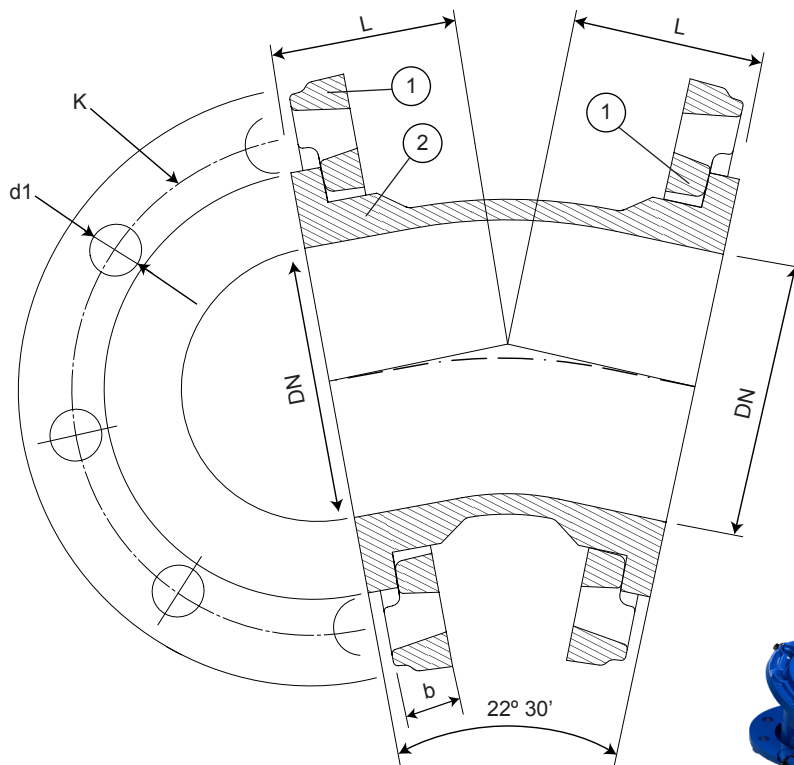
Branch office: Rua de Aveiro 50, 3050-420 Pampilhosa – Portugal | Tel.: (+351) 239 490100 | Fax: (+351) 231 949292 | comercial@fucoli-somepal.pt

DOUBLE FLANGED 22° 30' BEND

Flanged fittings

DN 50 - 1000 PN10/16/25

10.1002



DN 40 to DN 600

DN 700 to DN 1000

Component list

pos.	components	material	standard
1	Flange	Ductile iron EN-GJS-500-7	EN 1563
2	Body	Ductile iron EN-GJS-500-7	EN 1563

Reference and dimensions

DN	PN	code	L mm	K mm	n° x d1 mm	b mm	Flange movable / fixed	Kg approx.
50	10/16	10002020	65	125	4 x 19	21	movable	6
50	25	10002022	65	125	4 x 19	21	movable	6
60	10/16	10002030	65	135	4 x 19	21	movable	7
60	25	10002032	65	135	8 x 19	21	movable	7
65	10/16	10002040	65	145	4 x 19	21	movable	7
65	25	10002042	65	145	8 x 19	21	movable	7
80	10/16	10002050	65	160	8 x 19	21	movable	8
80	25	10002052	65	160	8 x 19	21	movable	8
100	10/16	10002060	68	180	8 x 19	21	movable	9
100	25	10002062	68	190	8 x 23	21	movable	10
125	10/16	10002070	75	210	8 x 19	21	movable	12
125	25	10002072	75	220	8 x 28	21	movable	13
150	10/16	10002080	80	240	8 x 23	21	movable	15
150	25	10002082	80	250	8 x 28	21	movable	16
200	10/16	10002090	87	295	8 - 12 x 23	22	movable	20
200	25	10002092	87	310	12 x 28	22	movable	21
250	10	10002100	110	350	12 x 23	26	movable	32
250	16	10002101	110	355	12 x 28	26	movable	32
250	25	10002102	110	370	12 x 31	26	movable	35
300	10	10002110	123	400	12 x 23	32	movable	44
300	16	10002111	123	410	12 x 28	32	movable	44

continued on next page

All the drawing, technical data, dimensions and weights are not binding. Subject to change. The components may be replaced by equivalent or higher materials without prior notice.

Ed.8 Rev.2 2/3

DOUBLE FLANGED 22° 30' BEND**10.1002****Flanged fittings****DN 50 - 1000 PN10/16/25**

continued from previous page

DN	PN	code	L mm	K mm	n° x d1 mm	b mm	Flange movable / fixed	Kg approx.
300	25	10002115	123	430	16 x 31	32	movable	50
350	10	10002112	140	460	16 x 23	36	movable	58
350	16	10002113	140	470	16 x 28	36	movable	61
350	25	10002117	140	490	16 x 34	36	movable	72
400	10	10002120	150	515	16 x 28	38	movable	71
400	16	10002121	150	525	16 x 31	38	movable	75
400	25	10002125	150	550	16 x 37	38	movable	91
450	10	10002130	170	565	20 x 28	38	movable	90
450	16	10002131	170	585	20 x 31	38	movable	99
450	25	10002435	170	600	20 x 37	38	movable	110
500	10	10002150	180	620	20 x 28	40	movable	110
500	16	10002151	180	650	20 x 34	40	movable	128
500	25	10002152	180	660	20 x 37	40	movable	140
600	10	10002180	205	725	20 x 31	46	movable	154
600	16	10002181	205	770	20 x 37	46	movable	174
600	25	10002182	205	770	20 x 41	46	movable	188
700	10	10118150	245	840	24 x 31	32.5	fixed	280
700	16	10118152	245	840	24 x 37	39.5	fixed	-
700	25	10118154	245	875	24 x 44	46.5	fixed	-
800	10	10118160	275	950	24 x 34	35	fixed	396
800	16	10118162	275	950	24 x 41	43	fixed	-
800	25	10118164	275	990	24 x 50	51	fixed	-
900	10	10118170	300	1050	28 x 34	37.5	fixed	448
900	16	10118172	300	1050	28 x 41	46.5	fixed	-
900	25	10118174	300	1090	28 x 50	55.5	fixed	-
1000	10	10118180	327	1160	28 x 37	40	fixed	580
1000	16	10118182	327	1170	28 x 44	50	fixed	-
1000	25	10118184	327	1210	28 x 57	60	fixed	-

**Fucoli Somepal**
FUNDAÇÃO DE FERRO, S. A.Visit our website at www.fucoli-somepal.pt

Head office: Estrada de Coselhas, 3000-125 Coimbra – Portugal | Tel.: (+351) 239 490100 | Fax: (+351) 239 490198

Branch office: Rua de Aveiro 50, 3050-420 Pampilhosa – Portugal | Tel.: (+351) 239 490100 | Fax: (+351) 231 949292 | comercial@fucoli-somepal.pt