

**STEM CAP**  
**for soft sealing gate valve**  
**DN 20 - 500**

05.200

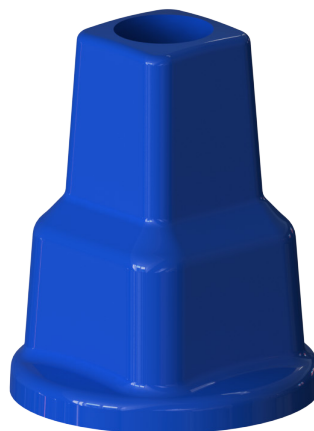


**Product description**

- Stem cap for soft sealing gate valve

**Features**

- Stem cap in ductile iron (EN-GJS-500-7) with epoxy paint coating for soft sealing gate valve
- Consult our technical services for other dimension.



**Fucoli Somepal**  
FUNDAÇÃO DE FERRO, S. A.

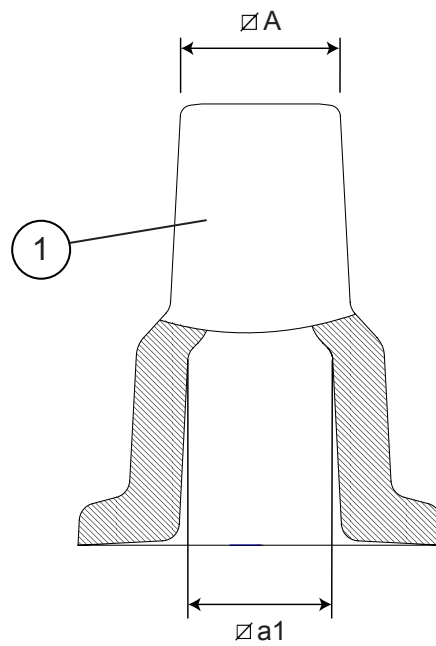
Visit our website at [www.fucoli-somepal.pt](http://www.fucoli-somepal.pt)

**Head office:** Estrada de Coselhas, 3000-125 Coimbra – Portugal | Tel.: (+351) 239 490100 | Fax: (+351) 239 490198

**Branch office:** Rua de Aveiro 50, 3050-420 Pampilhosa – Portugal | Tel.: (+351) 239 490100 | Fax: (+351) 231 949292 | [comercial@fucoli-somepal.pt](mailto:comercial@fucoli-somepal.pt)

**STEM CAP**  
for soft sealing gate valve  
**DN 20 - 500**

05.200



**Component list**

pos.	components	material	standard
1	Stem cap	Ductile iron EN-GJS-500-7	EN 1563

**Reference and dimensions**

DN	code	$\varnothing A$ mm	$\varnothing a1$ mm	Kg approx.
20 (3/4") / 25 (1") / 32 (1 1/4") / 40 (1 1/2") / 50 (2")	10707410	27	13	0.2
40 / 50 / 63	10707411	27	14	0.2
60 / 65 / 75 / 80 / 90	10707412	27	17	0.2
100 / 110 / 125 / 140 / 150 / 160	10707413	27	19	0.2
200	10707414	27	24	1
250 / 300 / 315	10707415	27	27	1
350 / 400 / 450 / 500	10707416	27	32	1
600	10707417	27	41	1.7



**Fucoli Somepal**  
FUNDAÇÃO DE FERRO, S.A.

Visit our website at [www.fucoli-somepal.pt](http://www.fucoli-somepal.pt)

Head office: Estrada de Coselhas, 3000-125 Coimbra – Portugal | Tel.: (+351) 239 490100 | Fax: (+351) 239 490198

Branch office: Rua de Aveiro 50, 3050-420 Pampilhosa – Portugal | Tel.: (+351) 239 490100 | Fax: (+351) 231 949292 | [comercial@fucoli-somepal.pt](mailto:comercial@fucoli-somepal.pt)

