

# RECESSED RECTANGULAR MANHOLE COVER SERIES NR B125

12.501



## Product description

- Recessed rectangular manhole cover series NR
- Water based black painting

## Installation location

- Class B125 - Footways, pedestrian areas and comparable areas, car parks or car parking decks

## Standards

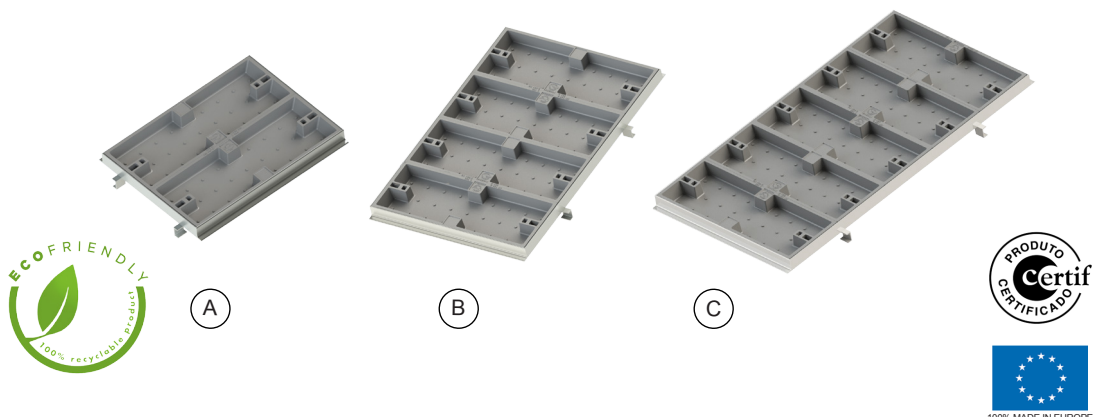
- Designed according to EN 124-1/2

## Certifications

- Certificate Certif DDA - 009/2021

## Features

- Model used in telecommunications networks and in situations where wide and easy access to the manhole is required
- Approved by the main telecommunications operators
- Ductile cast iron cover (EN-GJS-500-7) with water based black painting and steel zinc frame
- Cover with two lifting points for easy operation/handling
- Frame with stone-bolt for fixing
- Allow a block paving infill, in this way dissimulate the manhole cover presence fitting it with the involving space
- Characterized for its great dimensions and the modularity, in such a way that the same cover can be used in three distinct frames
- Available in 3 models:
  - A. NR1 model consisting of 2 cover + frame
  - B. NR2 model consisting of 4 covers + frame
  - C. NR3 model consisting of 5 covers + frame
- Personalization of the cover with inscriptions and logo in high relief with minimal quantities
- On request hot dip galvanized frame.



**Fucoli Somepal**  
FUNDAÇÃO DE FERRO, S. A.

Visit our website at [www.fucoli-somepal.pt](http://www.fucoli-somepal.pt)

Head office: Estrada de Coselhas, 3000-125 Coimbra – Portugal | Tel.: (+351) 239 490100 | Fax: (+351) 239 490198

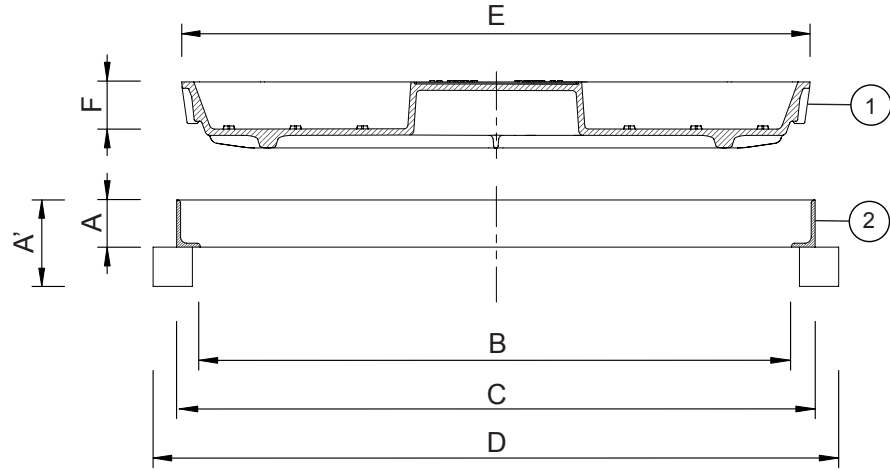
Branch office: Rua de Aveiro 50, 3050-420 Pampilhosa – Portugal | Tel.: (+351) 239 490100 | Fax: (+351) 231 949292 | [comercial@fucoli-somepal.pt](mailto:comercial@fucoli-somepal.pt)

# RECESSED RECTANGULAR MANHOLE COVER SERIES NR B125

12.501



Tree models available



## Component list

pos.	components	material	standard
1	Cover	Ductile iron EN-GJS-500-7	EN 1563
2	Frame	Steel zinc	-

## Reference and dimensions

Modelo - Class	code	Frame					Cover		Weight	
		height mm	height with stone-bolt mm	clear opening mm	external mm	ext. with stone-bolt mm	external mm	recessed height mm	Cover kg	Total kg
		A	A'	B	C	D	E	F	approx.	approx.
□ NR1 - B125	24D4CX2NNEAZZZZ00AA	60	110	600 x 750	660 x 803	660 x 873	(2) 800 x 299.5	60	(2) 24.2	67
□ NR2 - B125	24D4EQ2NNEAZZZZ00AA	60	110	1200 x 750	1260 x 803	1260 x 873	(4) 800 x 299.5	60	(4) 24.2	123
□ NR3 - B125	24D4FU2NNEAZZZZ00AA	60	110	1500 x 750	1560 x 803	1560 x 873	(5) 800 x 299.5	60	(5) 24.2	150



**Fucoli Somepal**  
FUNDAÇÃO DE FERRO, S.A.

Visit our website at [www.fucoli-somepal.pt](http://www.fucoli-somepal.pt)

Head office: Estrada de Coselhas, 3000-125 Coimbra – Portugal | Tel.: (+351) 239 490100 | Fax: (+351) 239 490198

Branch office: Rua de Aveiro 50, 3050-420 Pampilhosa – Portugal | Tel.: (+351) 239 490100 | Fax: (+351) 231 949292 | [comercial@fucoli-somepal.pt](mailto:comercial@fucoli-somepal.pt)



100% MADE IN EUROPE