

STEM CAP MALE OR FEMALE for penstock valve DN 100 - 1200

05.210

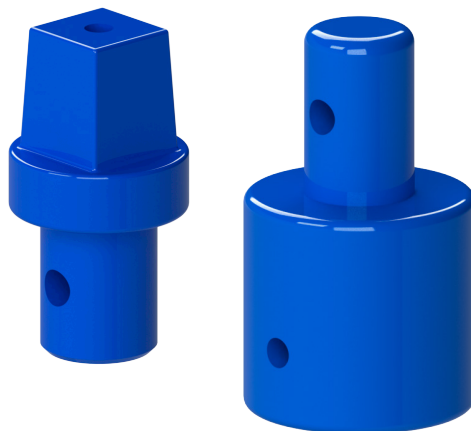


Product description

- Stem cap male or female for penstock valve

Features

- Stems caps in ductile iron (EN-GJS-500-7) with epoxy paint coating for penstock valve
- Available two models: male and female
- Consult our technical services for other dimension.



Fucoli Somepal
FUNDAÇÃO DE FERRO, S. A.

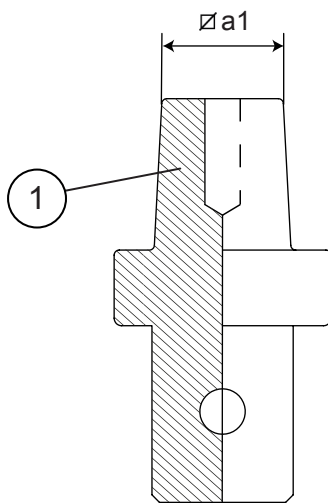
Visit our website at www.fucoli-somepal.pt

Head office: Estrada de Coselhas, 3000-125 Coimbra – Portugal | Tel.: (+351) 239 490100 | Fax: (+351) 239 490198

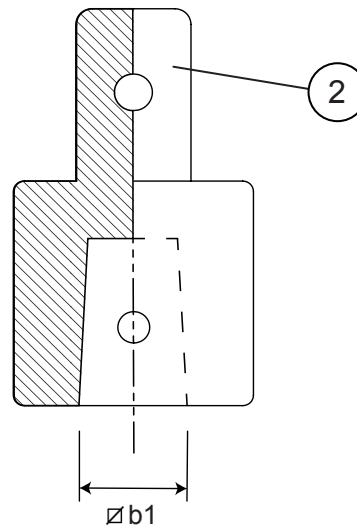
Branch office: Rua de Aveiro 50, 3050-420 Pampilhosa – Portugal | Tel.: (+351) 239 490100 | Fax: (+351) 231 949292 | comercial@fucoli-somepal.pt

STEM CAP MALE OR FEMALE for penstock valve DN 100 - 1200

05.210



Stem cap
male



Stem cap
female

Component list

pos.	components	material	standard
1	Stem cap male	Ductile iron EN-GJS-500-7	EN 1563
2	Stem cap female	Ductile iron EN-GJS-500-7	EN 1563

Reference and dimensions

DN	code stem cap male	$\varnothing a1$ mm	Kg approx.	code stem cap female	$\varnothing a1$ mm	Kg approx.
100	10707410	19	0.3	10708100	17	1
150	10707100	19	1	10708120	19	1
200	10707200	24	1	10708200	24	1
250	10707200	24	1	10708200	24	1
300	10707205	27	2	10708205	27	2
350	10707205	27	2	10708205	27	2
400	10707250	32	3	10708210	32	4
450	10707250	32	3	10708210	32	4
500	10707250	32	3	10708210	32	4
600	10707270	32	3	10708210	32	4
700	10707304	41	8	10707228	41	8
800	10707304	41	8	10707228	41	8
900	10707304	41	8	10707228	41	8
1000	10707305	46	9	10707240	46	9



Fucoli Somepal
FUNDIÇÃO DE FERRO, S.A.

Visit our website at www.fucoli-somepal.pt

Head office: Estrada de Coselhas, 3000-125 Coimbra – Portugal | Tel.: (+351) 239 490100 | Fax: (+351) 239 490198

Branch office: Rua de Aveiro 50, 3050-420 Pampilhosa – Portugal | Tel.: (+351) 239 490100 | Fax: (+351) 231 949292 | comercial@fucoli-somepal.pt



100% MADE IN EUROPE