

ROUND MANHOLE COVER

SERIES FUCOLI

B125, C250, D400 and E600

12.103



Product description

- Round manhole cover series FUCOLI
- Water based black painting
- Hydraulic sealing or elastic seating anti-noise

Installation location

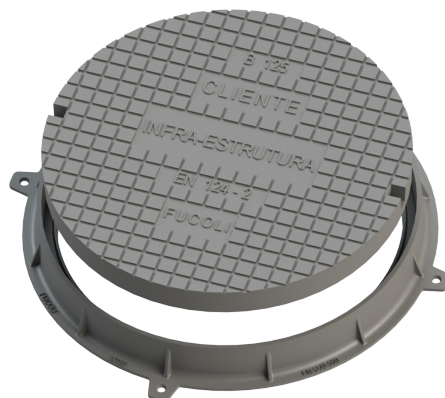
- Class B125 - Footways, pedestrian areas and comparable areas, car parks or car parking decks
- Class C250 - For gully tops, installed in the area of kerbside channels of roads which when measured from the kerb edge, extends a maximum of 0,5 m into the carriageway and a maximum of 0,2 m into the pedestrian area
- Class D400 - Carriageways of roads (including pedestrian streets), hard shoulders and parking areas for all types of road vehicles
- Class E600 - Areas imposing high wheel loads, e.g. docks, aircraft pavements

Standards

- Designed according to EN 124-1/2

Features

- Ductile cast iron cover and frame (EN-GJS-500-7) with water based black painting
- Cover with non-slip raised pattern according to EN 124-1 designed to allow quick and easy installation
- Cover with two lifting points for easy operation/handling
- Cover with a wide range of diameters and resistance class
- Cover with a robust conception
- Available with hydraulic sealing to prevent the odours or with elastic seating which assures the cover perfectly fits the frame and also gives stability and silent operating even in high traffic intensity
- Personalization of the cover with inscriptions and logo in high relief with minimal quantities.



Fucoli-Somepal
FUNDIÇÃO DE FERRO, S.A.

Visit our website at www.fucoli-somepal.pt

Head office: Estrada de Coselhas, 3000-125 Coimbra – Portugal | Tel.: (+351) 239 490100 | Fax: (+351) 239 490198

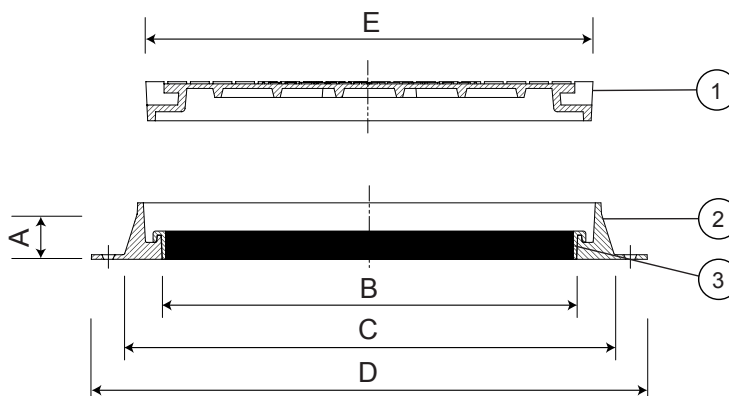
Branch office: Rua de Aveiro 50, 3050-420 Pampilhosa – Portugal | Tel.: (+351) 239 490100 | Fax: (+351) 231 949292 | comercial@fucoli-somepal.pt

ROUND MANHOLE COVER SERIES FUCOLI B125, C250, D400 and E600

12.103



Fucoli 550



Component list

pos.	components	material	standard
1	Cover	Ductile iron EN-GJS-500-7	EN 1563
2	Frame	Ductile iron EN-GJS-500-7	EN 1563
3a	Elastic seating anti-noise	Polyethylene	-
3b	Elastic seating anti-noise	Flexible PVC	-

Reference and dimensions

pos.	Model - DN - Class	code	Frame				Cover	hydraulic sealing Y / N	Weight	
			height mm A	clear opening mm B	Ø external mm C	Ø ext. with stone-bolt mm D	Ø external mm E		Cover kg approx.	Total kg approx.
-	*Fucoli 550 - B125	24B1CD2FNFBZZZZ00AA	75	550	665	738	594	Y	27	42
-	*Fucoli 550 - C250	24B1CD3FNFBZZZZ00AA	75	550	665	738	594	Y	35	50
-	*Fucoli 550 - D400	24B1CD4FNFBZZZZ00AA	75	550	665	738	594	Y	49	64
-	*Fucoli 600 - D400	24B1CI4FNFBZZZZ00AA	75	600	750	785	676	Y	57	75
3a	Fucoli 600 - D400	24B1CI4FNFBZZZZ00AC	75	626	750	785	676	N	57	74
-	*Fucoli 600 - E600	24B1CI5FNFBZZZZ00AA	75	600	750	785	676	Y	80	99
3a	Fucoli 600 - E600	24B1CI5FNFBZZZZ00AC	75	626	750	785	676	N	80	97
3b	*Fucoli 800 - B125	24B1DC2FNFBZZZZ00AA	75	800	893	980	830	N	43	73



Fucoli-Somepal
FUNDAÇÃO DE FERRO, S.R.L.

Visit our website at www.fucoli-somepal.pt

Head office: Estrada de Coselhas, 3000-125 Coimbra – Portugal | Tel.: (+351) 239 490100 | Fax: (+351) 239 490198

Branch office: Rua de Aveiro 50, 3050-420 Pampilhosa – Portugal | Tel.: (+351) 239 490100 | Fax: (+351) 231 949292 | comercial@fucoli-somepal.pt



100% MADE IN EUROPE