

FLANGED SPIGOT CONNECTION

Flanged fittings

DN 40 - 1200 PN10/16/25

10.1500



Product description

- Flanged spigot connection for drinking water and neutral liquids

Standards

- Designed according to EN 545
- Flange drilling to EN 1092-2 PN10/16/25

Corrosion protection

- Epoxy powder coating RAL 5005
- Applied internal and external with a minimum coating thickness of 250 µm
- Potable water approved epoxy coating fusion bonded according to EN 14901 and GSK (RAL-GZ662) guidelines

Approvals

- ACS Potability Certificate 22 ACC NY 023

Features

- Fitting approved for drinking water
- Body and flange in ductile cast iron EN-GJS-500-7
- Fast and easy to install
- Accessory with movable flanges up to DN 600 (inclusive) and fixed flanges from DN 700.



Fucoli Somepal
FUNDAÇÃO DE FERRO, S. A.

Visit our website at www.fucoli-somepal.pt

Head office: Estrada de Coselhas, 3000-125 Coimbra – Portugal | Tel.: (+351) 239 490100 | Fax: (+351) 239 490198

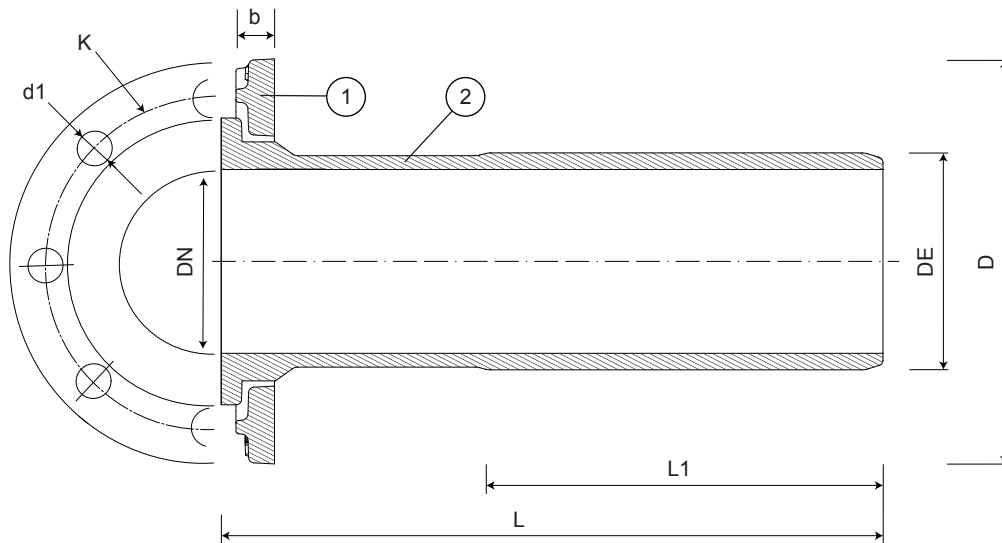
Branch office: Rua de Aveiro 50, 3050-420 Pampilhosa – Portugal | Tel.: (+351) 239 490100 | Fax: (+351) 231 949292 | comercial@fucoli-somepal.pt

FLANGED SPIGOT CONNECTION

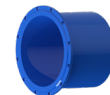
Flanged fittings

DN 40 - 1200 PN10/16/25

10.1500



DN 40 to DN 600



DN 700 to DN 1200

Component list

pos.	components	material	standard
1	Flange	Ductile iron EN-GJS-500-7	EN 1563
2	Body	Ductile iron EN-GJS-500-7	EN 1563

Reference and dimensions

DN	DE	PN	code	L mm	L1 mm	K mm	n° x d1 mm	b mm	D mm	Flange movable / fixed	Kg approx.
40	56	10/16	10090010	335	200	110	4 x 19	21	150	movable	5
40	56	25	10091010	335	200	110	4 x 19	21	150	movable	5
50	66	10/16	10090020	340	200	125	4 x 19	21	165	movable	6
50	66	25	10091020	340	200	125	4 x 19	21	165	movable	6
60	77	10/16	10090030	345	200	135	4 x 19	21	175	movable	6
60	77	25	10091030	345	200	135	8 x 19	21	175	movable	6
65	82	10/16	10090040	345	200	145	4 x 19	21	185	movable	7
65	82	25	10091040	345	200	145	8 x 19	21	185	movable	7
80	98	10/16	10090050	350	215	160	8 x 19	21	200	movable	8
80	98	25	10091050	350	215	160	8 x 19	21	200	movable	8
100	118	10/16	10090060	360	215	180	8 x 19	21	220	movable	12
100	118	25	10091060	360	215	190	8 x 23	21	235	movable	12
125	144	10/16	10090070	370	220	210	8 x 19	21	250	movable	13
125	144	25	10091070	370	220	220	8 x 28	21	270	movable	13
150	170	10/16	10090080	380	225	240	8 x 23	21	285	movable	16
150	170	25	10091080	380	225	250	8 x 28	21	300	movable	16
200	222	10/16	10090090	400	230	295	8 - 12 x 23	22	340	movable	24
200	222	25	10091090	400	230	310	12 x 28	22	360	movable	24
250	274	10	10090100	420	240	350	12 x 23	26	400	movable	34
250	274	16	10090105	420	240	355	12 x 28	26	400	movable	34
250	274	25	10091100	420	240	370	12 x 31	26	425	movable	36
300	326	10	10090110	440	250	400	12 x 23	32	455	movable	50
300	326	16	10090115	440	250	410	12 x 28	32	455	movable	50
300	326	25	10091110	440	250	430	16 x 31	32	485	movable	52
350	378	10	10090120	460	260	460	16 x 23	36	505	movable	56
350	378	16	10090125	460	260	470	16 x 28	36	520	movable	58
350	378	25	10091120	460	260	490	16 x 34	36	555	movable	63
400	429	10	10090130	480	270	515	16 x 28	38	565	movable	78

continued on next page

All the drawing, technical data, dimensions and weights are not binding. Subject to change. The components may be replaced by equivalent or higher materials without prior notice.

Ed.8 Rev. 1 2/3

FLANGED SPIGOT CONNECTION

Flanged fittings

DN 40 - 1200 PN10/16/25

10.1500



continued from previous page

DN	DE	PN	code	L mm	L1 mm	K mm	n° x d1 mm	b mm	D mm	Flange movable / fixed	Kg approx.
400	429	16	10090135	480	270	525	16 x 31	38	580	móvel	80
400	429	25	10091130	480	270	550	16 x 37	38	620	móvel	86
450	480	10	10090140	500	280	565	20 x 28	38	615	móvel	86
450	480	16	10090145	500	280	585	20 x 31	38	640	móvel	91
450	480	25	10091140	500	280	600	20 x 37	38	670	móvel	99
500	532	10	10090150	520	290	620	20 x 28	40	670	móvel	113
500	532	16	10090155	520	290	650	20 x 34	40	715	móvel	122
500	532	25	10091150	520	290	660	20 x 37	40	730	móvel	126
600	635	10	10090160	560	310	725	20 x 31	46	780	móvel	160
600	635	16	10090165	560	310	770	20 x 37	46	840	móvel	165
600	635	25	10091160	560	310	770	20 x 41	46	845	móvel	-
700	738	10	10090170	600	330	840	24 x 31	32.5	895	fixa	250
700	738	16	10090175	600	330	840	24 x 37	39.5	910	fixa	260
700	738	25	10091170	600	330	875	24 x 44	46.5	960	fixa	280
800	842	10	10090180	600	330	950	24 x 34	35	1015	fixa	300
800	842	16	10090185	600	330	950	24 x 41	43	1025	fixa	315
800	842	25	10091180	600	330	990	24 x 50	51	1085	fixa	335
900	945	10	10090190	600	330	1050	28 x 34	37.5	1115	fixa	330
900	945	16	10090195	600	330	1050	28 x 41	46.5	1125	fixa	350
900	945	25	10091190	600	330	1090	28 x 50	55.5	1185	fixa	370
1000	1048	10	10090200	600	330	1160	28 x 37	40	1230	fixa	352
1000	1048	16	10090205	600	330	1170	28 x 44	50	1255	fixa	374
1000	1048	25	10091200	600	330	1210	28 x 57	60	1320	fixa	437
1200	1255	10	10090210	600	330	1380	32 x 41	45	1455	fixa	454
1200	1255	16	10090215	600	330	1390	32 x 50	57	1485	fixa	503
1200	1255	25	10091210	600	330	1420	32 x 57	69	1530	fixa	617



Fucoli Somepal
FUNDAÇÃO DE FERRO, S. A.

Visit our website at www.fucoli-somepal.pt

Head office: Estrada de Coselhas, 3000-125 Coimbra – Portugal | Tel.: (+351) 239 490100 | Fax: (+351) 239 490198

Branch office: Rua de Aveiro 50, 3050-420 Pampilhosa – Portugal | Tel.: (+351) 239 490100 | Fax: (+351) 231 949292 | comercial@fucoli-somepal.pt



100% MADE IN EUROPE