

FLANGED GRATER

Flanged fittings

DN 50 - 600 PN10/16

10.1600



Product description

- Flanged grater for drinking water and neutral liquids

Standards

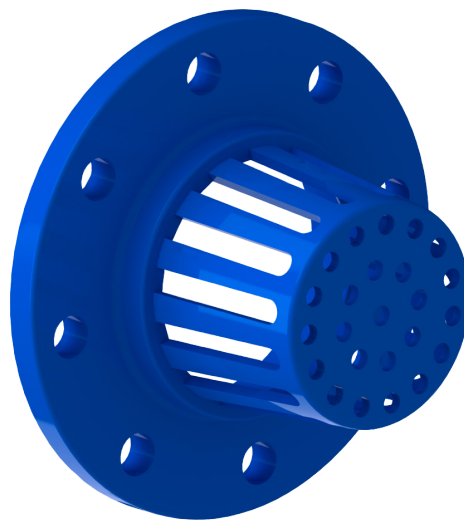
- Designed according to EN 545
- Flange drilling to EN 1092-2 PN10/16

Corrosion protection

- Epoxy powder coating RAL 5005
- Applied internal and external with a minimum coating thickness of 250 µm
- Potable water approved epoxy coating fusion bonded according EN 14901 and GSK (RAL-GZ662) guidelines

Features

- Fitting approved for drinking water
- Body and flange in ductile iron cast iron EN-GJS-500-7
- Fast and easy to install.



Fucoli Somepal
FUNDAÇÃO DE FERRO, S. A.

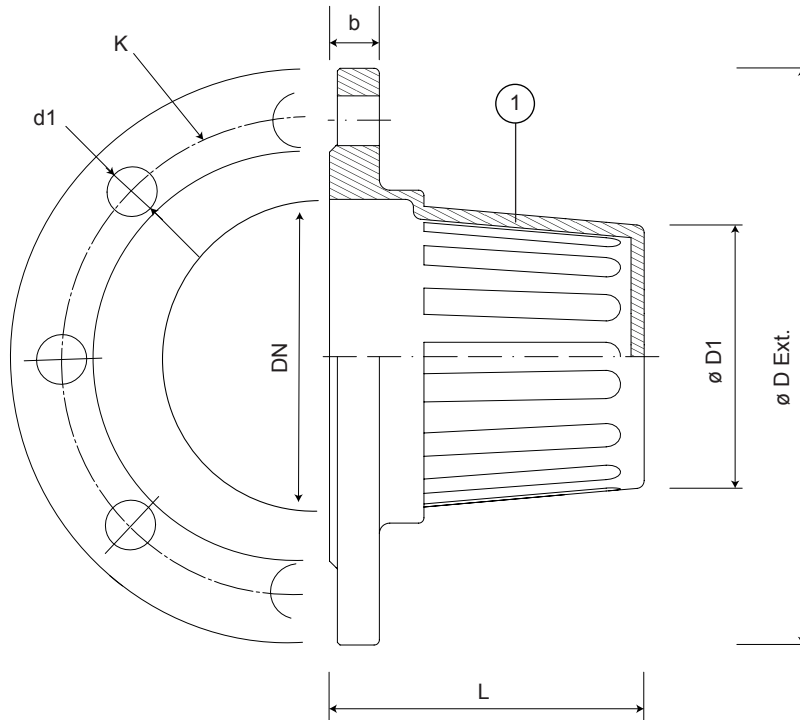
Visit our website at www.fucoli-somepal.pt

Head office: Estrada de Coselhas, 3000-125 Coimbra – Portugal | Tel.: (+351) 239 490100 | Fax: (+351) 239 490198

Branch office: Rua de Aveiro 50, 3050-420 Pampilhosa – Portugal | Tel.: (+351) 239 490100 | Fax: (+351) 231 949292 | comercial@fucoli-somepal.pt

FLANGED GRATER
Flanged fittings
DN 50 - 600 PN10/16

10.1600



Component list

pos.	components	material	standard
1	Body	Ductile iron EN-GJS-500-7	EN 1563

Reference and dimensions

DN	PN	code	L mm	ø D1 mm	ø D Ext.	K mm	n° x d1 mm	b mm	Kg approx.
50	10/16	10506010	100	50	165	125	4 x 19	21	2
60	10/16	10506020	100	60	175	135	4 x 19	21	3
65	10/16	10506022	110	70	185	145	4 x 19	21	3
80	10/16	10506030	112	84	200	160	8 x 19	21	4
100	10/16	10506040	120	100	220	180	8 x 19	21	5
125	10/16	10506050	130	125	250	210	8 x 19	21	6
150	10/16	10506060	140	150	285	240	8 x 23	21	8
200	10	10506070	165	200	340	295	8 x 23	22	13
200	16	10506075	165	200	340	295	12 x 23	22	13
250	10	10506080	180	250	400	350	12 x 23	26	17
250	16	10506085	180	250	400	355	12 x 28	26	17
300	10	10506090	195	305	455	400	12 x 23	32	19
300	16	10506095	195	305	455	410	12 x 28	32	22
350	10	10506100	-	-	-	460	16 x 23	36	25
350	16	10506105	-	-	-	470	16 x 28	36	25
400	10	10506110	270	405	565	515	16 x 28	38	32
400	16	10506115	270	405	580	525	16 x 31	38	35
450	10	10506120	-	-	-	565	20 x 28	38	42
450	16	10506125	-	-	-	585	20 x 31	38	42
500	10	10506130	325	505	670	620	20 x 28	40	46
500	16	10506135	325	505	715	650	20 x 34	40	46
600	10	10506140	-	-	-	725	20 x 31	46	-
600	16	10506145	-	-	-	770	20 x 37	46	-



Fucoli Somepal
 FUNDAÇÃO DE FERRO, S.A.

Visit our website at www.fucoli-somepal.pt

Head office: Estrada de Coselhas, 3000-125 Coimbra – Portugal | Tel.: (+351) 239 490100 | Fax: (+351) 239 490198

Branch office: Rua de Aveiro 50, 3050-420 Pampilhosa – Portugal | Tel.: (+351) 239 490100 | Fax: (+351) 231 949292 | comercial@fucoli-somepal.pt



100% MADE IN EUROPE