

DOUBLE FLANGED 11° 15' BEND

Flanged fittings

DN 50 - 1000 PN10/16

11.2003



Product description

- Double flanged 11° 15' bend for waste water

Standards

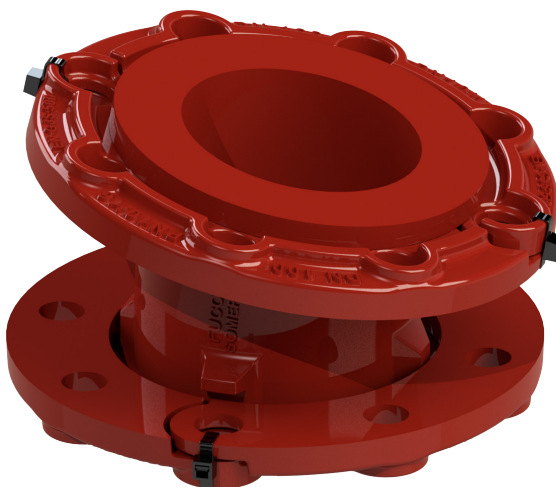
- Designed according to EN 545
- Flange drilling to EN 1092-2 PN10/16

Corrosion protection

- Epoxy powder coating RAL 3011
- Applied internal and external with a minimum coating thickness of 250 µm
- Fusion bonded epoxy coating according EN 14901 and GSK (RAL-GZ662) guidelines

Features

- Fitting for waste water
- Body and flange in ductile cast iron EN-GJS-500-7
- Fast and easy to install
- Accessory with movable flanges up to DN 600 (inclusive) and fixed flanges from DN 700
- The flanged fittings for sewerage applications from Fucoli-Somepal have CE mark in accordance with standard EN 598 annex ZA.



Fucoli Somepal
FUNDAÇÃO DE FERRO, S. A.

Visit our website at www.fucoli-somepal.pt

Head office: Estrada de Coselhas, 3000-125 Coimbra – Portugal | Tel.: (+351) 239 490100 | Fax: (+351) 239 490198

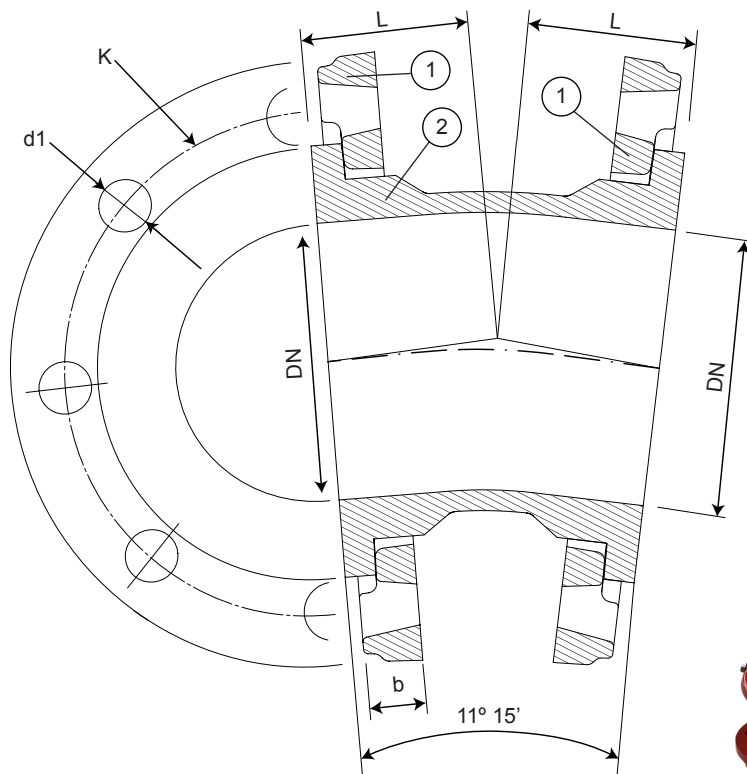
Branch office: Rua de Aveiro 50, 3050-420 Pampilhosa – Portugal | Tel.: (+351) 239 490100 | Fax: (+351) 231 949292 | comercial@fucoli-somepal.pt

DOUBLE FLANGED 11° 15' BEND

Flanged fittings

DN 50 - 1000 PN10/16

11.2003



DN 40 to DN 600



DN 700 to DN 1000

Component list

pos.	components	material	standard
1	Flange	Ductile iron EN-GJS-500-7	EN 1563
2	Body	Ductile iron EN-GJS-500-7	EN 1563

Reference and dimensions

DN	PN	code	L mm	K mm	n° x d1 mm	b mm	Flange movable / fixed	Kg approx.
50	10/16	10008601	57	125	4 x 19	21	movable	6
60	10/16	10008602	57	135	4 x 19	21	movable	6
65	10/16	10008603	57	145	4 x 19	21	movable	6
80	10/16	10008604	57	160	8 x 19	21	movable	7
100	10/16	10008605	60	180	8 x 19	21	movable	9
125	10/16	10008606	63	210	8 x 19	21	movable	11
150	10/16	10008607	68	240	8 x 23	21	movable	14
200	10/16	10008608	71	295	8 - 12 x 23	22	movable	18
250	10	10008609	84	350	12 x 23	26	movable	29
250	16	10008610	84	355	12 x 28	26	movable	29
300	10	10008611	95	400	12 x 23	32	movable	41
300	16	10008612	95	410	12 x 28	32	movable	41
350	10	10008613	110	460	16 x 23	36	movable	53
350	16	10008614	110	470	16 x 28	36	movable	58
400	10	10008615	120	515	16 x 28	38	movable	68
400	16	10008616	120	525	16 x 31	38	movable	74
450	10	10008621	125	565	20 x 28	38	movable	80
450	16	10008622	125	585	20 x 31	38	movable	89
500	10	10008617	130	620	20 x 28	40	movable	102
500	16	10008618	130	650	20 x 34	40	movable	120
600	10	10008619	150	725	20 x 31	46	movable	134

continued on next page

DOUBLE FLANGED 11° 15' BEND

Flanged fittings

DN 50 - 1000 PN10/16

11.2003



continued from previous page

DN	PN	code	L mm	K mm	n° x d1 mm	b mm	Flange movable / fixed	Kg approx.
600	16	10008620	150	770	20 x 37	46	movable	154
700	10	10151150	175	840	24 x 31	32.5	fixed	228
700	16	10151152	175	840	24 x 37	39.5	fixed	-
800	10	10151160	190	950	24 x 34	35	fixed	262
800	16	10151162	190	950	24 x 41	43	fixed	302
900	10	10151170	213	1050	28 x 34	37.5	fixed	366
900	16	10151172	213	1050	28 x 41	46.5	fixed	-
1000	10	10151180	230	1160	28 x 37	40	fixed	410
1000	16	10151182	230	1170	28 x 44	50	fixed	-



Fucoli Somepal
FUNDIÇÃO DE FERRO, S. A.

Visit our website at www.fucoli-somepal.pt

Head office: Estrada de Coselhas, 3000-125 Coimbra – Portugal | Tel.: (+351) 239 490100 | Fax: (+351) 239 490198

Branch office: Rua de Aveiro 50, 3050-420 Pampilhosa – Portugal | Tel.: (+351) 239 490100 | Fax: (+351) 231 949292 | comercial@fucoli-somepal.pt

