

RECTANGULAR MANHOLE COVER

SERIES UF

B125

12.402



Product description

- Rectangular manhole cover series UF
- Water based black painting

Installation location

- Class B125 - Footways, pedestrian areas and comparable areas, car parks or car parking decks

Standards

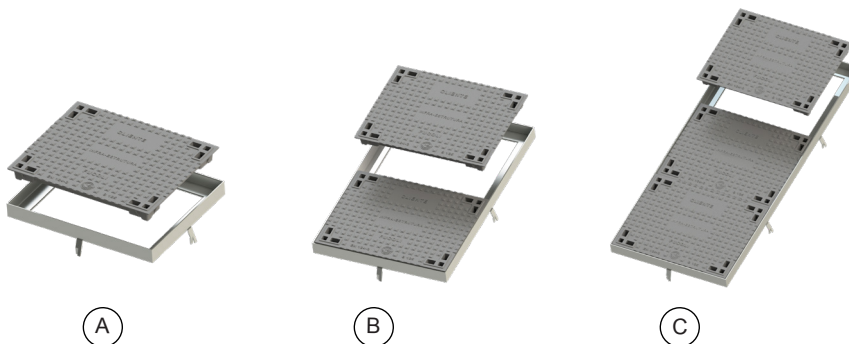
- Designed according to EN 124-1/2

Certifications

- Certificate Certif DDA - 002/2021

Features

- Ductile cast iron cover (EN-GJS-500-7) with water based black painting and steel zinc frame
- Cover with non-slip raised pattern according to EN 124-1 designed to allow quick and easy installation
- Cover with fixed supports in NBR sealing for silent operating
- Frame with stone-bolt for fixing
- Characterized for its great dimensions and the modularity, in such a way that the same cover can be used in three distinct frames
- This model is used in situations where is necessary an large access zones to do interventions
- Available in 3 models:
 - A. 633 x 495 model consisting of 1 cover + frame
 - B. 1266 x 495 model consisting of 2 covers + frame
 - C. 1899 x 495 model consisting of 3 covers + frame
- Personalization of the cover with inscriptions and logo in high relief with minimal quantities
- On request hot dip galvanized frame.



Fucoli-Somepal
FUNDIÇÃO DE FERRO, S.A.

Visit our website at www.fucoli-somepal.pt

Head office: Estrada de Coselhas, 3000-125 Coimbra – Portugal | Tel.: (+351) 239 490100 | Fax: (+351) 239 490198

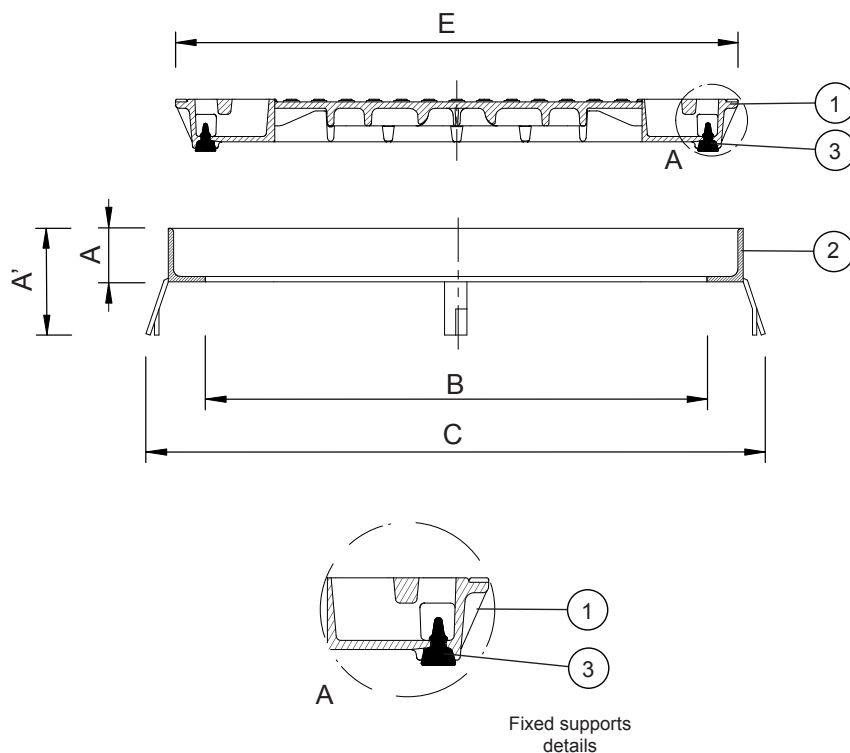
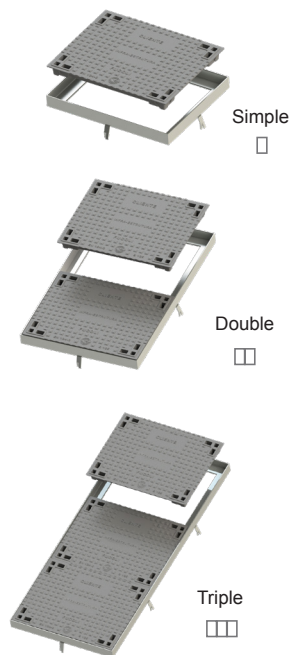
Branch office: Rua de Aveiro 50, 3050-420 Pampilhosa – Portugal | Tel.: (+351) 239 490100 | Fax: (+351) 231 949292 | comercial@fucoli-somepal.pt

RECTANGULAR MANHOLE COVER SERIES UF B125

12.402



Tree models available



Component list

pos.	components	material	standard
1	Cover	Ductile iron EN-GJS-500-7	EN 1563
2	Frame	Steel zinc	-
3	Fixed supports	Elastomer NBR	EN 549

Reference and dimensions

Modelo - Class	code	Frame				Cover	Weight	
		height mm	height with stone-bolt mm	clear opening mm	ext. with stone-bolt mm	external mm	Cover kg	Total kg
		A	A'	B	C	E	approx.	approx.
□ UF Simple - B125	24D1CM2VNEBZZZZ00AG	60	110	527 x 389	647 x 509	633 x 495	29	40
□□ UF Double - B125	24D1DV2VNEFZZZZ00AG	60	110	884 x 527	1004 x 647	(2) 633 x 495	(2) 29	75
□□□ UF Triple - B125	24D1FT2VNEFZZZZ00AG	60	110	1380 x 527	1500 x 647	(3) 633 x 495	(3) 29	111
□ Frame UF Simple - B125	20429012	60	110	527 x 389	647 x 509	-	-	11
□□ Frame UF Double - B125	20429022	60	110	884 x 527	1004 x 647	-	-	17
□□□ Frame UF Triple - B125	20429032	60	110	1380 x 527	1500 x 647	-	-	24
□ Cover UF - B125	24Q1CM2VNABZZZZ00AG	60	110	-	-	633 x 495	29	29



Fucoli-Somepal
FUNDIÇÃO DE FERRO, S. R. L.

Visit our website at www.fucoli-somepal.pt

Head office: Estrada de Coselhas, 3000-125 Coimbra – Portugal | Tel.: (+351) 239 490100 | Fax: (+351) 239 490198

Branch office: Rua de Aveiro 50, 3050-420 Pampilhosa – Portugal | Tel.: (+351) 239 490100 | Fax: (+351) 231 949292 | comercial@fucoli-somepal.pt



100% MADE IN EUROPE

All drawings, technical data, dimensions and weights are not binding. Subject to change. The components may be replaced by equivalent or higher materials without prior notice.

Ed.8 Rev. 2