



Product description

- Headstock for an ergonomic maneuvering above ground of buried valves, installed in manholes or maneuver chambers

Feature

- Body and lid of ductile iron with water based black painting
- Base of body with support surface that facilitates the settlement reducing the risks of unevenness to the pavement
- Concentric and angle headstock for a manual operation
- Concentric headstock with ISO flange (ISO 5210) that allows the installation of an electric actuator or gearbox.



Fucoli Somepal
FUNDAÇÃO DE FERRO, S. A.

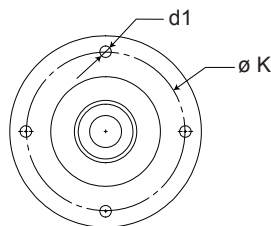
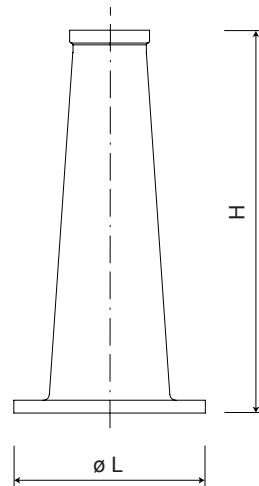
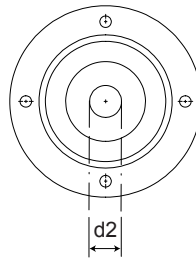
Visit our website at www.fucoli-somepal.pt

Head office: Estrada de Coselhas, 3000-125 Coimbra – Portugal | Tel.: (+351) 239 490100 | Fax: (+351) 239 490198

Branch office: Rua de Aveiro 50, 3050-420 Pampilhosa – Portugal | Tel.: (+351) 239 490100 | Fax: (+351) 231 949292 | comercial@fucoli-somepal.pt



Concentric headstock



Component list

components	material	standard
Headstock	Ductile iron EN-GJS-500-7	EN 1563

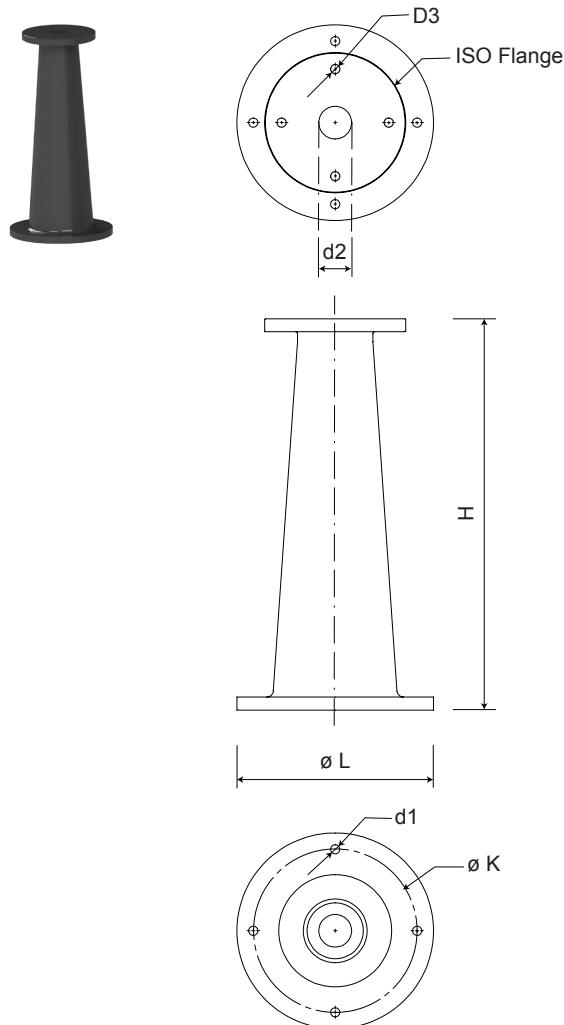
Reference and dimensions

DN	code	ø L mm	H mm	ø d2 mm	ø K mm	n° x d1 mm	Kg approx.
100 - 250	10711030	300	600	34	250	4 x 18	23
300 - 350	10711034	300	600	43	250	4 x 18	23
400 - 600	10711038	300	600	49	250	4 x 18	23
700 - 1000	10711042	300	600	61	250	4 x 18	23



continued from previous page

Concentric headstock with ISO flange



Component list

components	material	standard
Headstock	Ductile iron EN-GJS-500-7	EN 1563

Reference and dimensions

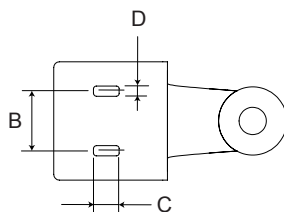
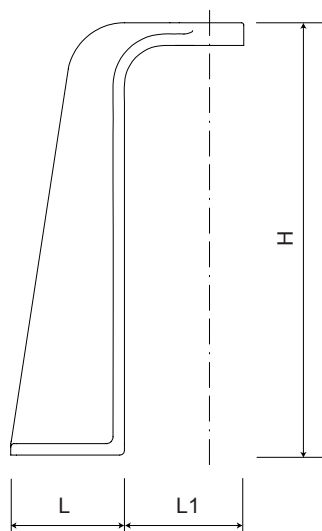
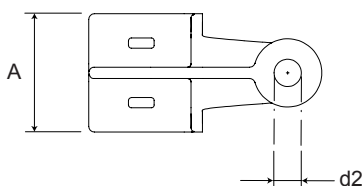
DN	code	ISO 5210 flange	ø L mm	H mm	ø d2 mm	n° x D3 mm	ø K mm	n° x d1 mm	Kg approx.
100 - 250	10711019	F10	300	600	34	4 x 12	250	4 x 18	25
300 - 400	10711021	F14	300	600	43	4 x 18	250	4 x 18	25
450 - 600	10711022	F16	300	600	49	4 x 22	250	4 x 18	25
700 - 800	10711023	F25	300	600	61	8 x 18	250	4 x 18	25
900 - 1000	10711024	F30	300	600	61	8 x 22	250	4 x 18	25

continued on next page



continued from previous page

Angle headstock



Component list

components	material	standard
Headstock	Ductile iron EN-GJS-500-7	EN 1563

Reference and dimensions

DN	code	L mm	L1 mm	H mm	ø d2 mm	A mm	B mm	D mm	C mm	Kg approx.
100 - 250	1071101601	200	150	600	34	200	105	18	45	29
300 - 350	1071101602	200	150	600	43	200	105	18	45	29
400 - 600	1071101606	200	150	600	49	200	105	18	45	29
700 - 1000	1071101610	200	150	600	61	200	105	18	45	29



Fucoli Somepal
FUNDIÇÃO DE FERRO, S.A.

Visit our website at www.fucoli-somepal.pt

Head office: Estrada de Coselhas, 3000-125 Coimbra – Portugal | Tel.: (+351) 239 490100 | Fax: (+351) 239 490198

Branch office: Rua de Aveiro 50, 3050-420 Pampilhosa – Portugal | Tel.: (+351) 239 490100 | Fax: (+351) 231 949292 | comercial@fucoli-somepal.pt

