

STEM CAP MALE OR FEMALE for penstock valve DN 100 - 1200

05.210

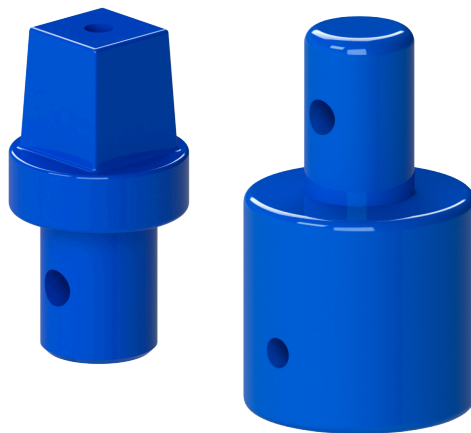


Product description

- Stem cap male or female for penstock valve

Features

- Stems caps in ductile iron (EN-GJS-500-7) with epoxy paint coating for penstock valve
- Available two models: male and female
- Consult our technical services for other dimension.



Fucoli Somepal
FUNDAÇÃO DE FERRO, S. A.

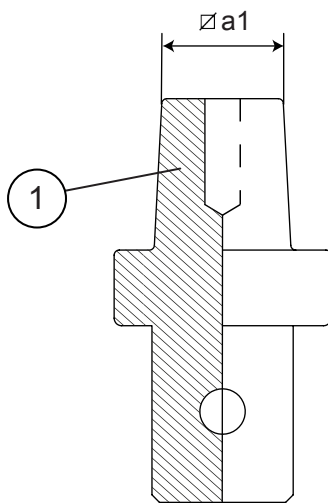
Visit our website at www.fucoli-somepal.pt

Head office: Estrada de Coselhas, 3000-125 Coimbra – Portugal | Tel.: (+351) 239 490100 | Fax: (+351) 239 490198

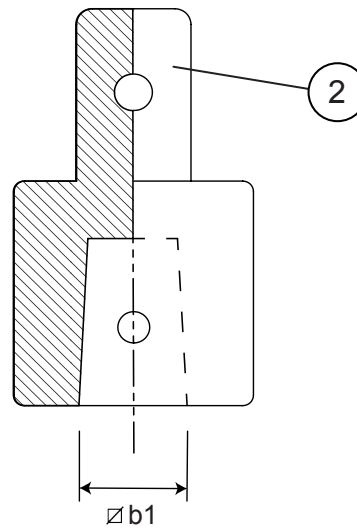
Branch office: Rua de Aveiro 50, 3050-420 Pampilhosa – Portugal | Tel.: (+351) 239 490100 | Fax: (+351) 231 949292 | comercial@fucoli-somepal.pt

STEM CAP MALE OR FEMALE for penstock valve DN 100 - 1200

05.210



Stem cap
male



Stem cap
female

Component list

| pos. | components | material | standard |
|------|-----------------|---------------------------|----------|
| 1 | Stem cap male | Ductile iron EN-GJS-500-7 | EN 1563 |
| 2 | Stem cap female | Ductile iron EN-GJS-500-7 | EN 1563 |

Reference and dimensions

| DN | code stem cap male | $\varnothing a1$ mm | Kg approx. | code stem cap female | $\varnothing a1$ mm | Kg approx. |
|------|-----------------------|------------------------|---------------|-------------------------|------------------------|---------------|
| 100 | 10707410 | 19 | 0.3 | 10708100 | 16 | 1 |
| 150 | 10707100 | 19 | 1 | 10708120 | 19 | 1 |
| 200 | 10707200 | 24 | 1 | 10708200 | 24 | 1 |
| 250 | 10707200 | 24 | 1 | 10708200 | 24 | 1 |
| 300 | 10707205 | 27 | 2 | 10708205 | 27 | 2 |
| 350 | 10707205 | 27 | 2 | 10708205 | 27 | 2 |
| 400 | 10707250 | 32 | 3 | 10708210 | 32 | 4 |
| 450 | 10707250 | 32 | 3 | 10708210 | 32 | 4 |
| 500 | 10707250 | 32 | 3 | 10708210 | 32 | 4 |
| 600 | 10707270 | 32 | 3 | 10708210 | 32 | 4 |
| 700 | 10707304 | 41 | 8 | 10707228 | 41 | 8 |
| 800 | 10707304 | 41 | 8 | 10707228 | 41 | 8 |
| 900 | 10707304 | 41 | 8 | 10707228 | 41 | 8 |
| 1000 | 10707305 | 46 | 9 | 10707240 | 46 | 9 |



Fucoli Somepal
FUNDAÇÃO DE FERRO, S.A.

Visit our website at www.fucoli-somepal.pt

Head office: Estrada de Coselhas, 3000-125 Coimbra – Portugal | Tel.: (+351) 239 490100 | Fax: (+351) 239 490198

Branch office: Rua de Aveiro 50, 3050-420 Pampilhosa – Portugal | Tel.: (+351) 239 490100 | Fax: (+351) 231 949292 | comercial@fucoli-somepal.pt



100% MADE IN EUROPE