

DOUBLE FLANGED 45° BEND

Flanged fittings

DN 40 - 1000 PN10/16

11.2001



Product description

- Double flanged 45° bend for waste water

Standards

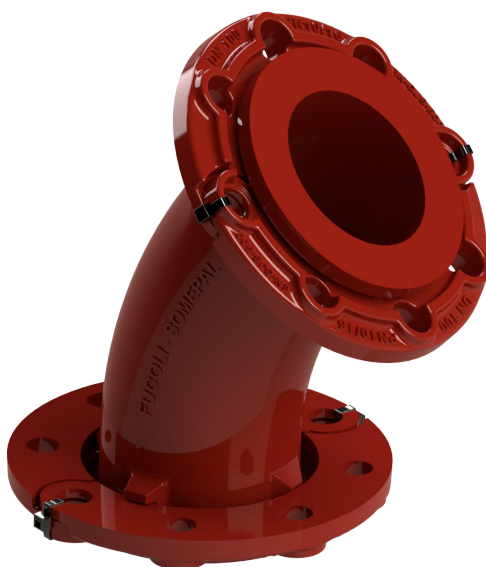
- Designed according to EN 545
- Flange drilling to EN 1092-2 PN10/16

Corrosion protection

- Epoxy powder coating RAL 3011
- Applied internal and external with a minimum coating thickness of 250 µm
- Fusion bonded epoxy coating according EN 14901 and GSK (RAL-GZ662) guidelines

Features

- Fitting for waste water
- Body and flange in ductile cast iron EN-GJS-500-7
- Fast and easy to install
- Accessory with movable flanges up to DN 600 (inclusive) and fixed flanges from DN 700
- The flanged fittings for sewerage applications from Fucoli-Somepal have CE mark in accordance with standard EN 598 annex ZA.



Fucoli Somepal
FUNDAÇÃO DE FERRO, S. A.

Visit our website at www.fucoli-somepal.pt

Head office: Estrada de Coselhas, 3000-125 Coimbra – Portugal | Tel.: (+351) 239 490100 | Fax: (+351) 239 490198

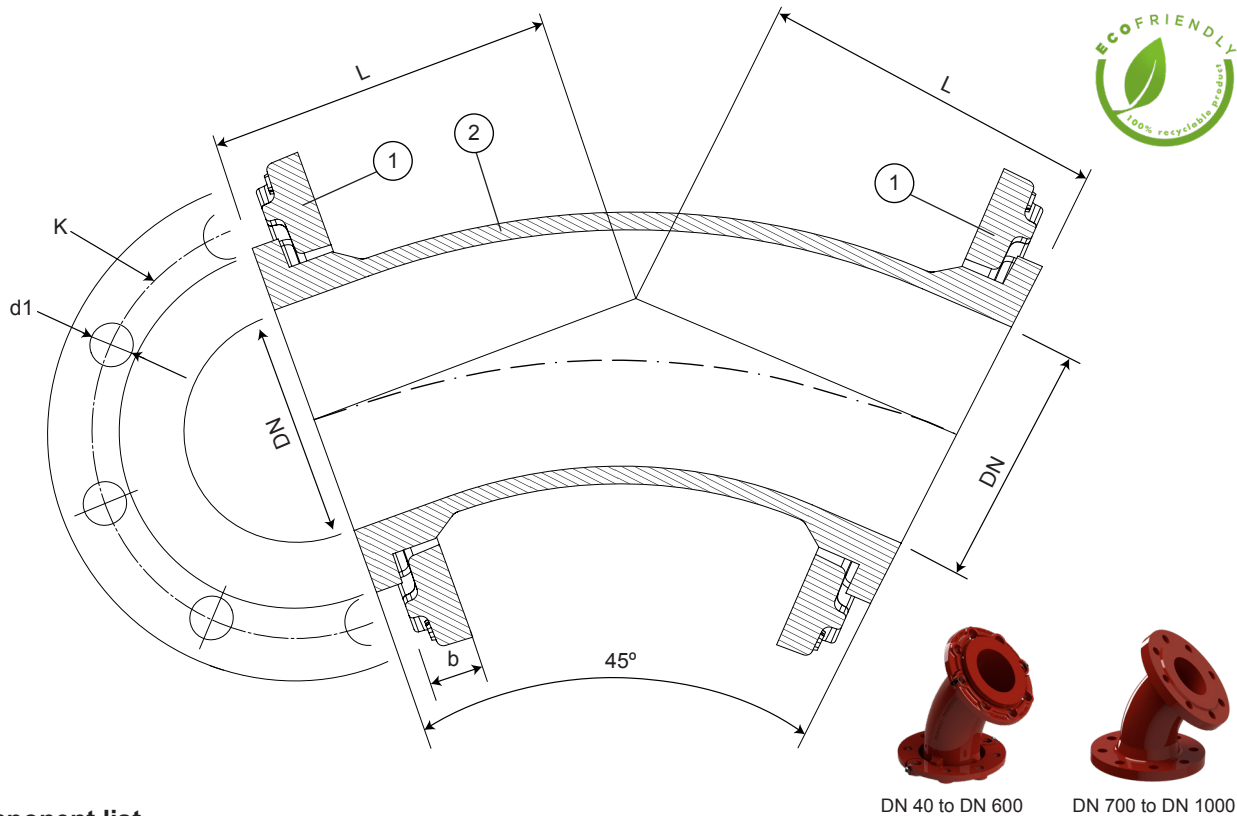
Branch office: Rua de Aveiro 50, 3050-420 Pampilhosa – Portugal | Tel.: (+351) 239 490100 | Fax: (+351) 231 949292 | comercial@fucoli-somepal.pt

DOUBLE FLANGED 45° BEND

Flanged fittings

DN 40 - 1000 PN10/16

11.2001



DN 40 to DN 600

DN 700 to DN 1000

Component list

pos.	components	material	standard
1	Flange	Ductile iron EN-GJS-500-7	EN 1563
2	Body	Ductile iron EN-GJS-500-7	EN 1563

Reference and dimensions

DN	PN	code	L mm	K mm	n° x d1 mm	b mm	Flange movable / fixed	Kg approx.
40	10/16/25	10008400	78	110	4 x 19	21	movable	5
50	10/16	10008401	86	125	4 x 19	21	movable	6
60	10/16	10008402	92	135	4 x 19	21	movable	7
65	10/16	10008403	92	145	4 x 19	21	movable	7
80	10/16	10008404	130	160	8 x 19	21	movable	9
100	10/16	10008405	140	180	8 x 19	21	movable	11
125	10/16	10008406	150	210	8 x 19	21	movable	15
150	10/16	10008407	160	240	8 x 23	21	movable	18
200	10/16	10008408	180	295	8 - 12 x 23	22	movable	26
250	10	10008409	245	350	12 x 23	26	movable	47
250	16	10008410	245	355	12 x 28	26	movable	47
300	10	10008411	275	400	12 x 23	32	movable	63
300	16	10008412	275	410	12 x 28	32	movable	64
350	10	10008413	300	460	16 x 23	36	movable	83
350	16	10008414	300	470	16 x 28	36	movable	86
400	10	10008415	325	515	16 x 28	38	movable	110
400	16	10008416	325	525	16 x 31	38	movable	112
450	10	10008421	350	565	20 x 28	38	movable	130
450	16	10008422	350	585	20 x 31	38	movable	139
500	10	10008417	375	620	20 x 28	40	movable	157
500	16	10008418	375	650	20 x 34	40	movable	178

continued on next page

DOUBLE FLANGED 45° BEND

Flanged fittings

DN 40 - 1000 PN10/16

11.2001



continued from previous page

DN	PN	code	L mm	K mm	n° x d1 mm	b mm	Flange movable / fixed	Kg approx.
600	10	10008419	426	725	20 x 31	46	movable	230
600	16	10008420	426	770	20 x 37	46	movable	250
700	10	10115150	478	840	24 x 31	32.5	fixed	410
700	16	10115152	478	840	24 x 37	39.5	fixed	-
800	10	10115160	529	950	24 x 34	35	fixed	566
800	16	10115162	529	950	24 x 41	43	fixed	-
900	10	10115170	581	1050	28 x 34	37.5	fixed	656
900	16	10115172	581	1050	28 x 41	46.5	fixed	-
1000	10	10145180	632	1160	28 x 37	40	fixed	920
1000	16	10145182	632	1170	28 x 44	50	fixed	-



Fucoli Somepal
FUNDAÇÃO DE FERRO, S.A.

Visit our website at www.fucoli-somepal.pt

Head office: Estrada de Coselhas, 3000-125 Coimbra – Portugal | Tel.: (+351) 239 490100 | Fax: (+351) 239 490198

Branch office: Rua de Aveiro 50, 3050-420 Pampilhosa – Portugal | Tel.: (+351) 239 490100 | Fax: (+351) 231 949292 | comercial@fucoli-somepal.pt



100% MADE IN EUROPE