

DOUBLE FLANGED 22° 30' BEND

Flanged fittings

DN 50 - 1000 PN10/16

11.2002



Product description

- Double flanged 22° 30' bend for waste water

Standards

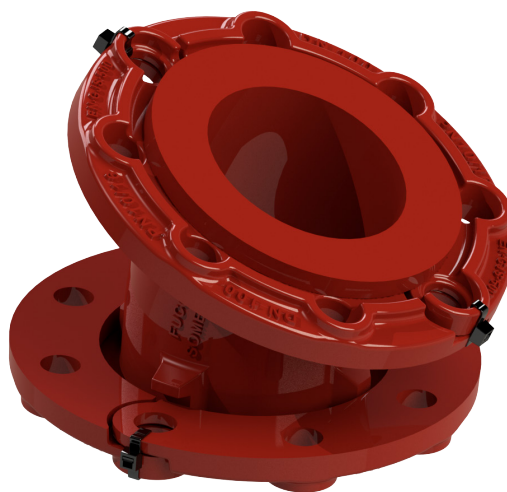
- Designed according to EN 545
- Flange drilling to EN 1092-2 PN10/16

Corrosion protection

- Epoxy powder coating RAL 3011
- Applied internal and external with a minimum coating thickness of 250 µm
- Fusion bonded epoxy coating according EN 14901 and GSK (RAL-GZ662) guidelines

Features

- Fitting for waste water
- Body and flange in ductile cast iron EN-GJS-500-7
- Fast and easy to install
- Accessory with movable flanges up to DN 600 (inclusive) and fixed flanges from DN 700
- The flanged fittings for sewerage applications from Fucoli-Somepal have CE mark in accordance with standard EN 598 annex ZA.



Fucoli Somepal
FUNDAÇÃO DE FERRO, S. A.

Visit our website at www.fucoli-somepal.pt

Head office: Estrada de Coselhas, 3000-125 Coimbra – Portugal | Tel.: (+351) 239 490100 | Fax: (+351) 239 490198

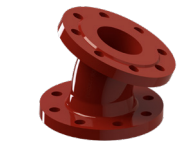
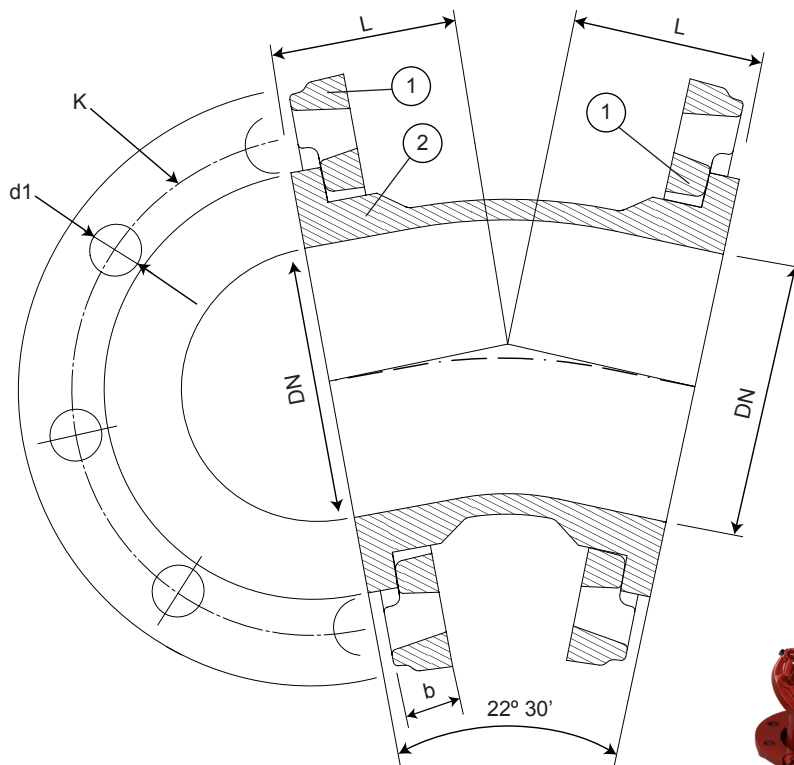
Branch office: Rua de Aveiro 50, 3050-420 Pampilhosa – Portugal | Tel.: (+351) 239 490100 | Fax: (+351) 231 949292 | comercial@fucoli-somepal.pt

DOUBLE FLANGED 22° 30' BEND

Flanged fittings

DN 50 - 1000 PN10/16

11.2002



DN 40 to DN 600

DN 700 to DN 1000

Component list

pos.	components	material	standard
1	Flange	Ductile iron EN-GJS-500-7	EN 1563
2	Body	Ductile iron EN-GJS-500-7	EN 1563

Reference and dimensions

DN	PN	code	L mm	K mm	n° x d1 mm	b mm	Flange movable / fixed	Kg approx.
50	10/16	10008801	65	125	4 x 19	21	movable	6
60	10/16	10008802	65	135	4 x 19	21	movable	7
65	10/16	10008803	65	145	4 x 19	21	movable	7
80	10/16	10008804	65	160	8 x 19	21	movable	8
100	10/16	10008805	68	180	8 x 19	21	movable	9
125	10/16	10008806	75	210	8 x 19	21	movable	12
150	10/16	10008807	80	240	8 x 23	21	movable	15
200	10/16	10008808	87	295	8 - 12 x 23	22	movable	20
250	10	10008809	110	350	12 x 23	26	movable	32
250	16	10008810	110	355	12 x 28	26	movable	32
300	10	10008811	123	400	12 x 23	32	movable	44
300	16	10008812	123	410	12 x 28	32	movable	44
350	10	10008813	140	460	16 x 23	36	movable	58
350	16	10008814	140	470	16 x 28	36	movable	61
400	10	10008815	150	515	16 x 28	38	movable	71
400	16	10008816	150	525	16 x 31	38	movable	75
450	10	10008821	170	565	20 x 28	38	movable	90
450	16	10008822	170	585	20 x 31	38	movable	99
500	10	10008817	180	620	20 x 28	40	movable	110
500	16	10008818	180	650	20 x 34	40	movable	128
600	10	10008819	205	725	20 x 31	46	movable	154

continued on next page

DOUBLE FLANGED 22° 30' BEND
Flanged fittings
DN 50 - 1000 PN10/16

11.2002



continued from previous page

DN	PN	code	L mm	K mm	n° x d1 mm	b mm	Flange movable / fixed	Kg approx.
600	16	10008820	205	770	20 x 37	46	movable	174
700	10	10148150	245	840	24 x 31	32.5	fixed	280
700	16	10148152	245	840	24 x 37	39.5	fixed	-
800	10	10148160	275	950	24 x 34	35	fixed	396
800	16	10148162	275	950	24 x 41	43	fixed	-
900	10	10148170	300	1050	28 x 34	37.5	fixed	448
900	16	10148172	300	1050	28 x 41	46.5	fixed	-
1000	10	10148180	327	1160	28 x 37	40	fixed	580
1000	16	10148182	327	1170	28 x 44	50	fixed	-



Fucoli Somepal
 FUNDIÇÃO DE FERRO, S. A.

Visit our website at www.fucoli-somepal.pt

Head office: Estrada de Coselhas, 3000-125 Coimbra – Portugal | Tel.: (+351) 239 490100 | Fax: (+351) 239 490198

Branch office: Rua de Aveiro 50, 3050-420 Pampilhosa – Portugal | Tel.: (+351) 239 490100 | Fax: (+351) 231 949292 | comercial@fucoli-somepal.pt

