

ROUND MANHOLE COVER SERIES ESTANQUE D400

12.105



Product description

- Round manhole cover series ESTANQUE
- Water based black painting

Installation location

- Class D400 - Carriageways of roads (including pedestrian streets), hard shoulders and parking areas for all types of road vehicles

Standards

- Designed according to EN 124-1/2

Certifications

- Certificate Certif "D400" DDA - 007/2021

Features

- Ductile cast iron cover and frame (EN-GJS-500-7) with water based black painting
- Cover with non-slip raised pattern according to EN 124-1 designed to allow quick and easy installation
- Cover with a robust conception
- Cover with two lifting points for easy operation/handling
- Elastic seating which assures the cover perfectly fits the frame and also gives stability and silent operating even in high traffic intensity
- O-ring seal that makes the watertight at 3 bar
- Available in 2 models:
 - A. Series Estanque 600 is supplied with 6 hexagonal bolts for fixing the cover to the frame
 - B. Series Estanque 600 with [P-I] is supplied with 4 hexagonal bolts, plus 2 inviolable bolts that work as an anti-theft system
- All screws are protected by a protective cover
- Personalization of the cover with inscriptions and logo in high relief with minimal quantities.



Fucoli-Somepal
FUNDIÇÃO DE FERRO, S.A.

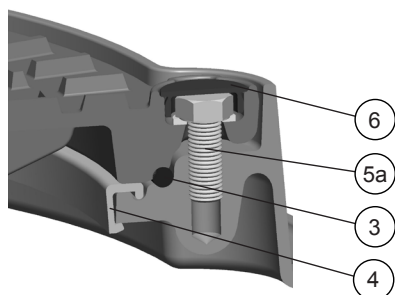
Visit our website at www.fucoli-somepal.pt

Head office: Estrada de Coselhas, 3000-125 Coimbra – Portugal | Tel.: (+351) 239 490100 | Fax: (+351) 239 490198

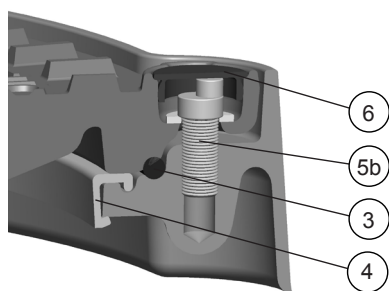
Branch office: Rua de Aveiro 50, 3050-420 Pampilhosa – Portugal | Tel.: (+351) 239 490100 | Fax: (+351) 231 949292 | comercial@fucoli-somepal.pt

ROUND MANHOLE COVER SERIES ESTANQUE D400

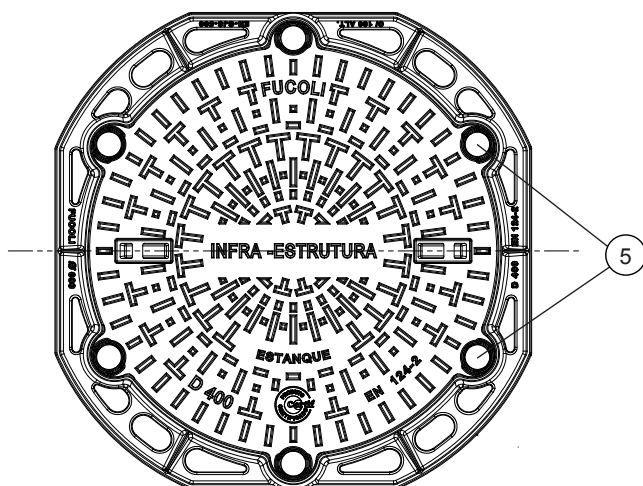
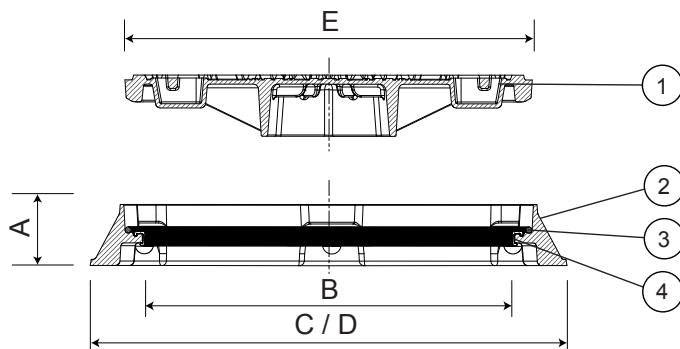
12.105



Detail of stainless steel A2 screw



Detail of inviolable stainless steel A2 screw [P-I]



Component list

pos.	components	material	standard
1	Cover	Ductile iron EN-GJS-500-7	EN 1563
2	Frame	Ductile iron EN-GJS-500-7	EN 1563
3	O-ring	Elastomer NBR	EN 681 - 1
4	Elastic seating anti-noise	Flexible PVC	-
5a	Bolt	Stainless steel A2	EN 10088 - 1
5b	Inviolable bolt	Stainless steel A2	EN 10088 - 1
6	Protection cap	Polyethylene (PE-LD)	-

Reference and dimensions

Model - DN - Class	code	Frame				Cover	Weight	
		height mm	clear opening mm	ø external mm	ø ext. with stone-bolt mm	ø external mm	Cover kg	Total kg
		A	B	C	D	E	approx.	approx.
Estanque 600 - D400	24B1CI4QNIBZZZZ00NB	100	600	850	850	650	46	74
Estanque 600 - D400 with [P-I]	24B1CI4QNIBZZZZ00OB	100	600	850	850	650	46	74



Fucoli-Somepal
FUNDIÇÃO DE FERRO, S.R.L.

Visit our website at www.fucoli-somepal.pt

Head office: Estrada de Coselhas, 3000-125 Coimbra – Portugal | Tel.: (+351) 239 490100 | Fax: (+351) 239 490198

Branch office: Rua de Aveiro 50, 3050-420 Pampilhosa – Portugal | Tel.: (+351) 239 490100 | Fax: (+351) 231 949292 | comercial@fucoli-somepal.pt



100% MADE IN EUROPE

All drawings, technical data, dimensions and weights are not binding. Subject to change. The components may be replaced by equivalent or higher materials without prior notice.

Ed.8 Rev. 1