

ALL FLANGED CROSSHEAD

Flanged fittings

DN 40 - 1000 PN10/16

11.2300



Product description

- All flanged crosshead for waste water

Standards

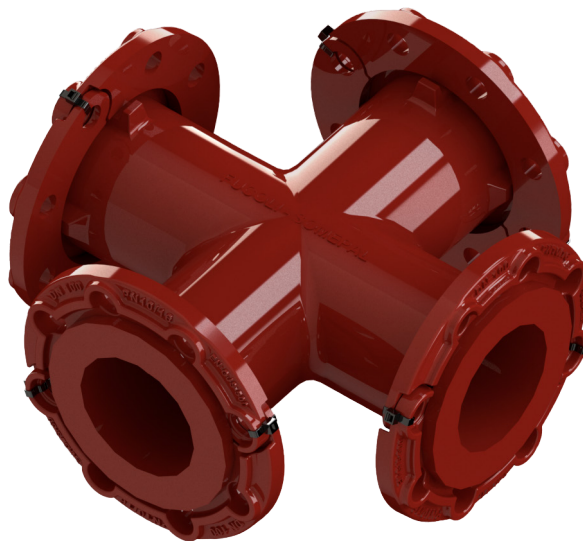
- Designed according to EN 545
- Flange drilling to EN 1092-2 PN10/16

Corrosion protection

- Epoxy powder coating RAL 3011
- Applied internal and external with a minimum coating thickness of 250 µm
- Fusion bonded epoxy coating according EN 14901 and GSK (RAL-GZ662) guidelines

Features

- Fitting for waste water
- Body and flange in ductile cast iron EN-GJS-500-7
- Fast and easy to install
- Accessory with movable flanges up to DN 600 (inclusive) and fixed flanges from DN 700
- The flanged fittings for sewerage applications from Fucoli-Somepal have CE mark in accordance with standard EN 598 annex ZA.



Fucoli Somepal
FUNDAÇÃO DE FERRO, S. A.

Visit our website at www.fucoli-somepal.pt

Head office: Estrada de Coselhas, 3000-125 Coimbra – Portugal | Tel.: (+351) 239 490100 | Fax: (+351) 239 490198

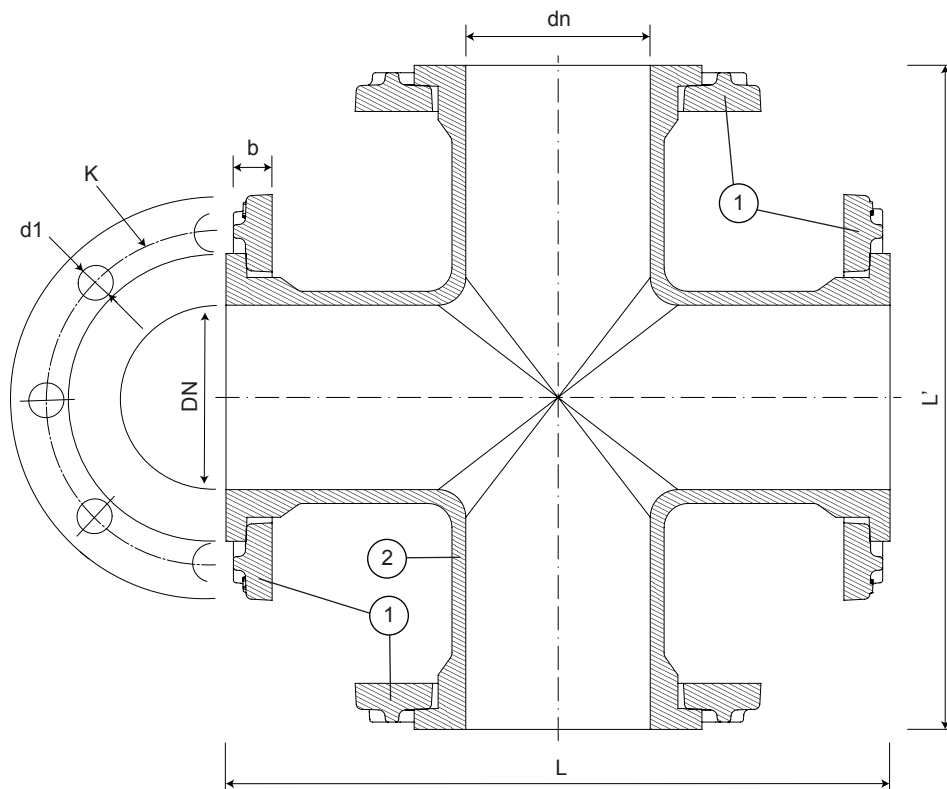
Branch office: Rua de Aveiro 50, 3050-420 Pampilhosa – Portugal | Tel.: (+351) 239 490100 | Fax: (+351) 231 949292 | comercial@fucoli-somepal.pt

ALL FLANGED CROSSHEAD

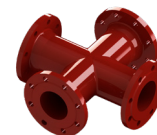
Flanged fittings

DN 40 - 1000 PN10/16

11.2300



DN 40 to DN 600



DN 700 to DN 1000

Component list

pos.	components	material	standard
1	Flange	Ductile iron EN-GJS-500-7	EN 1563
2	Body	Ductile iron EN-GJS-500-7	EN 1563

Reference and dimensions

DN x dn	PN	code	L mm	L' mm	K mm	n° x d1 mm	b mm	Flange movable / fixed	Kg approx.
40 x 40	10/16	10080016	255	255	110	4 x 19	21	movable	11
50 x 50	10/16	10080018	280	280	125	4 x 19	21	movable	13
60 x 60	10/16	10080021	305	300	135	4 x 19	21	movable	15
65 x 65	10/16	10080025	305	300	145	4 x 19	21	movable	16
80 x 80	10/16	10080030	330	330	160	8 x 19	21	movable	19
100 x 100	10/16	10080040	360	360	180	8 x 19	21	movable	23
125 x 125	10/16	10080047	400	400	210	8 x 19	21	movable	31
150 x 150	10/16	10080055	440	440	240	8 x 23	21	movable	37
200 x 200	10/16	10080064	520	520	295	8 - 12 x 23	22	movable	57
250 x 250	10	10080083	600	600	350	12 x 23	26	movable	81
250 x 250	16	10080084	600	600	355	12 x 28	26	movable	81
300 x 300	10	10080105	680	680	400	12 x 23	32	movable	118
300 x 300	16	10080106	680	680	410	12 x 28	32	movable	118
350 x 350	10	10080129	760	760	460	16 x 23	36	movable	158
350 x 350	16	10080130	760	760	470	16 x 28	36	movable	165
400 x 400	10	10080155	840	840	515	16 x 28	38	movable	208
400 x 400	16	10080156	840	840	525	16 x 31	38	movable	211
450 x 450	10	10080157	920	920	565	20 x 28	38	movable	280
450 x 450	16	10080158	920	920	585	20 x 31	38	movable	295
500 x 500	10	10080183	1000	1000	620	20 x 28	40	movable	360
500 x 500	16	10080184	1000	1000	650	20 x 34	40	movable	380

continued on next page

ALL FLANGED CROSSHEAD
Flanged fittings
DN 40 - 1000 PN10/16

11.2300



continued from previous page

DN x dn	PN	code	L mm	L' mm	K mm	n° x d1 mm	b mm	Flange movable / fixed	Kg approx.
600 x 600	10	10080213	1165	1165	725	20 x 31	46	movable	510
600 x 600	16	10080214	1165	1165	770	20 x 37	46	movable	535
700 x 700	10	10109450	1200	1200	840	24 x 31	32.5	fixed	770
700 x 700	16	10109451	1200	1200	840	24 x 37	39.5	fixed	-
800 x 800	10	10109460	1350	1350	950	24 x 34	35	fixed	950
800 x 800	16	10109461	1350	1350	950	24 x 41	43	fixed	-
900 x 900	10	10109470	1500	1500	1050	28 x 34	37.5	fixed	1270
900 x 900	16	10109471	1500	1500	1050	28 x 41	46.5	fixed	-
1000 x 1000	10	10109480	1650	1650	1160	28 x 37	40	fixed	1500
1000 x 1000	16	10109481	1650	1650	1170	28 x 44	50	fixed	-



Fucoli Somepal
 FUNDIÇÃO DE FERRO, S. A.

Visit our website at www.fucoli-somepal.pt

Head office: Estrada de Coselhas, 3000-125 Coimbra – Portugal | Tel.: (+351) 239 490100 | Fax: (+351) 239 490198

Branch office: Rua de Aveiro 50, 3050-420 Pampilhosa – Portugal | Tel.: (+351) 239 490100 | Fax: (+351) 231 949292 | comercial@fucoli-somepal.pt

