

TRIANGULAR MANHOLE COVER

SERIES NR

D400

12.300



Product description

- Triangular manhole cover series NR
- Water based black painting

Installation location

- Class D400 - Carriageways of roads (including pedestrian streets), hard shoulders and parking areas for all types of road vehicles

Standards

- Designed according to EN 124-1/2

Certifications

- Certificate Certif DDA - 010/2021

Features

- This model is used in telecommunications networks and in situations where wide and easy access to the manhole is required
- Approved by the main telecommunications operators
- Available in 2 models:
 - A. Articulated model:
 - Ductile cast iron cover and frame (EN-GJS-500-7) with water based black painting
 - Frame with lifting points and stone-bolts for fixation
 - Each cover/ triangle has two hinge system with self-cleaning system, simply opening of the manhole at 110° and safety 90° blocking system. Fit and remove is making through moving the cover to 90° and lift clear
 - The cover have a local to install an additional security lock. This lock may be conventional or inviolable and can be installed at any moment
 - Cover with non-slip raised pattern according to EN 124-1 designed to allow quick and easy installation
 - Nº 1 cover customization with inscriptions and logo in high relief with minimal quantities
 - B. Non-articulated model:
 - Ductile cast iron cover (EN-GJS-500-7) and steel zinc frame
 - Cover NR1 D400 has a local to install an additional security lock. This lock may be conventional or inviolable and can be installed at any moment
 - Cover with non-slip raised pattern according to EN 124-1 designed to allow quick and easy installation
 - Cover designed with a tripod system that guarantees stability and anti-noise
 - Cover with two lifting points for easy operation/handling
 - Personalization of the cover with inscriptions and logo in high relief with minimal quantities.



Fucoli Somepal
FUNDAÇÃO DE FERRO, S.A.

Visit our website at www.fucoli-somepal.pt

Head office: Estrada de Coselhas, 3000-125 Coimbra – Portugal | Tel.: (+351) 239 490100 | Fax: (+351) 239 490198

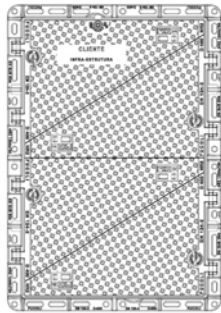
Branch office: Rua de Aveiro 50, 3050-420 Pampilhosa – Portugal | Tel.: (+351) 239 490100 | Fax: (+351) 231 949292 | comercial@fucoli-somepal.pt

TRIANGULAR MANHOLE COVER SERIES NR D400

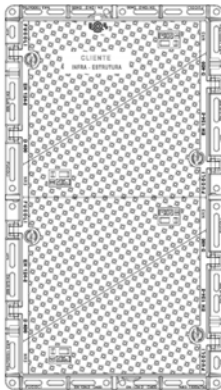
12.300



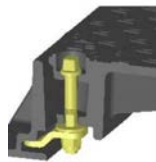
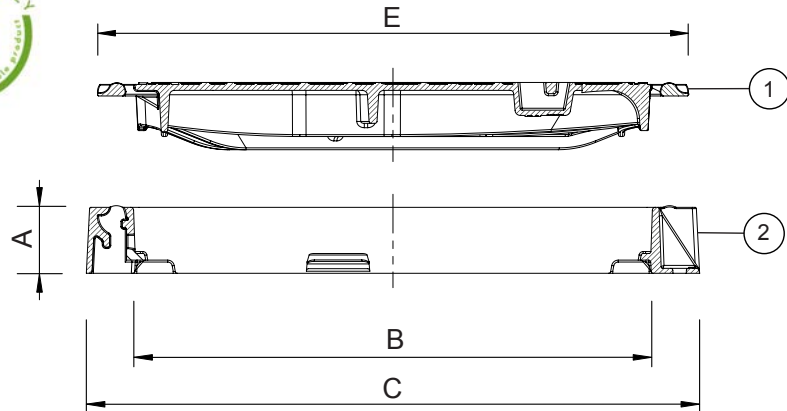
A. Articulated model



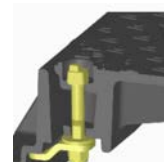
NR2



NR3



3a Conventional additional security lock [F-S]



3b Inviolable additional security lock [F-S-I]

Component list

pos.	components	material	standard
1	Cover	Ductile iron EN-GJS-500-7	EN 1563
2	Frame	Ductile iron EN-GJS-500-7	EN 1563
3a	Conventional security lock	Zinco 8.8	-
3b	Inviolable security lock	Zinco 8.8	-

Reference and dimensions

Subtitle:
[F-S] - Conventional security lock
[F-S-I] - Inviolable security lock

Model - Class	code	[F-S]	[F-S-I]	Frame			Cover	Weight	
				height mm A	clear opening mm B	ext. with stone-bolt mm C	external mm E	Cover kg approx.	Total kg approx.
NR2 hinged - D400	24E1EQ4NAIBZZZZ00AA			100	1200 x 750	1340 x 930	(4) 783 x 535	(4) 34.1	197
NR2 hinged - D400	24E1EQ4NAIBZZZZ00CA	•		100	1200 x 750	1340 x 930	(4) 783 x 535	(4) 34.1	197
NR2 hinged - D400	24E1EQ4NAIBZZZZ00DA		•	100	1200 x 750	1340 x 930	(4) 783 x 535	(4) 34.1	197
NR3 hinged - D400	24E1FU4NAIBZZZZ00AA			100	1500 x 750	1640 x 930	(4) 783 x 609	(4) 37.3	220
NR3 hinged - D400	24E1FU4NAIBZZZZ00CA	•		100	1500 x 750	1640 x 930	(4) 783 x 609	(4) 37.3	220
NR3 hinged - D400	24E1FU4NAIBZZZZ00DA		•	100	1500 x 750	1640 x 930	(4) 783 x 609	(4) 37.3	220

continued on next page

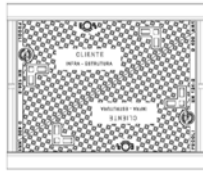
TRIANGULAR MANHOLE COVER SERIES NR D400

12.300

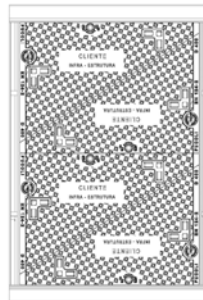


continued from previous page

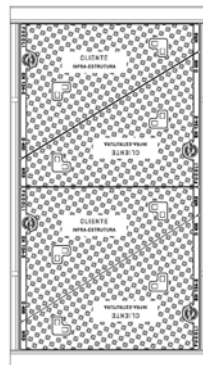
B. Non-articulated model



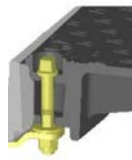
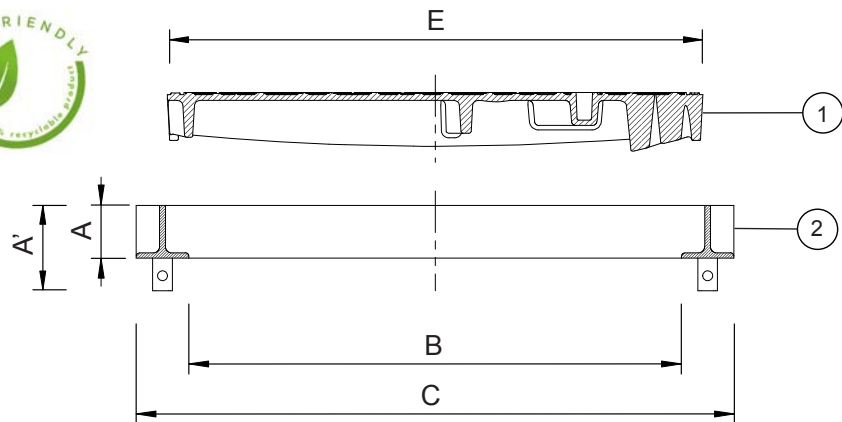
NR1



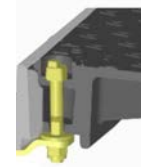
NR2



NR3

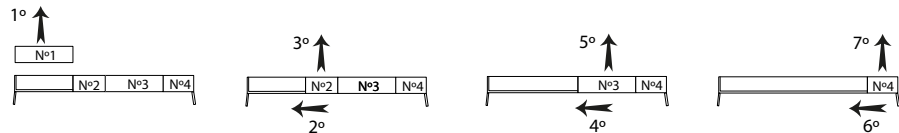


3a Conventional additional security lock [F-S]



3b Inviolable additional security lock [F-S-I]

Handling sequence



Component list

pos.	components	material	standard
1	Cover	Ductile iron EN-GJS-500-7	EN 1563
2	Frame	Steel zinc	EN 1563
3a	Conventional security lock	Zinco 8.8	-
3b	Inviolable security lock	Zinco 8.8	-

Reference and dimensions

Modelo - Class	code	[F-S]	[F-S-I]	Frame				Cover	Weight	
				height mm	height with stone-bolt mm	clear opening mm	ext. with stone-bolt mm	external mm	Cover kg approx.	Total kg approx.
				A	A'	B	C	E		
NR1 not hinged - D400	24E1CX4NNGFZZZZ00AA			80	130	750 x 600	910 x 760	(2) 816 x 535	(2) 39.6	110
NR1 not hinged - D400	24E1CX4NNGFZZZZ00CA	•		80	130	750 x 600	910 x 760	(2) 816 x 535	(2) 39.6	110
NR1 not hinged - D400	24E1CX4NNGFZZZZ00DA		•	80	130	750 x 600	910 x 760	(2) 816 x 535	(2) 39.6	110
NR2 not hinged - D400	24E1EQ4NNGFZZZZ00AA			80	130	1200 x 750	1360 x 910	(4) 816 x 535	(4) 39.6	203
NR3 not hinged - D400	24E1FU4NNGFZZZZ00AA			80	130	1500 x 750	1660 x 910	(4) 816 x 535	(4) 41.3	216



Fucoli Somepal
FUNDAÇÃO DE FERRO, S. A.

Visit our website at www.fucoli-somepal.pt

Head office: Estrada de Coselhas, 3000-125 Coimbra – Portugal | Tel.: (+351) 239 490100 | Fax: (+351) 239 490198

Branch office: Rua de Aveiro 50, 3050-420 Pampilhosa – Portugal | Tel.: (+351) 239 490100 | Fax: (+351) 231 949292 | comercial@fucoli-somepal.pt



100% MADE IN EUROPE