

FLANGED SOFT SEALING GATE VALVE ISO TOP FLANGE S14 3000

prepared for electric actuator
DN 40 - 500 PN10/16

11.102



Product description

- Flanged soft sealing gate valve with ISO top flange prepared for electrical actuator series 3000 for waste water
- Service temperature from 0°C (excluding frost) to 70°C

Standards

- Designed according to EN 1074 parte 1 & 2 and EN 1171
- Flange drilling to EN 1092-2 PN10/16
- Face-to-face according to EN 558 serie 14
- ISO top flange according to ISO 5210

Tests

All valves are individually hydrostatically tested according to EN 1074-1/2 and EN 12266:

- Seal 1.1 x PN (in bar); Body: 1.5 x PN (in bar). Operation torque test

Corrosion protection

- Epoxy powder coating RAL 3011
- Applied internal and external with a minimum coating thickness of 250 µm
- Fusion bonded epoxy coating according DIN 3476-1, EN 14901 and GSK (RAL-GZ662) guidelines

Features

- Isolation valve for waste water
- Full bore
- Low operating torque
- The valves from DN 250 to DN 300 are equipped with an axial bearing, from DN 350 to DN 500 are equipped with two thrust bearings to ensure reduced operating torque
- Stainless steel stem with rolled threads produced by cold rolling process, which keeps the steel structure and increase its mechanical resistance
- Stem sealing system with 4 O-rings in NBR
- O-ring stem sealing exchangeable under pressure
- Wedge fully vulcanized with NBR
- Top of the wedge conceived with “soft stop” system, which acts as an end stop for the fully open valve
- Wedge with brass nut fixed in the wedge core preventing vibration and ensure a long life span
- Wedge and body designed with “monorail” system
- Round NBR bonnet gasket fixed in a recess, surrounding the bolts, ensuring a perfect seal
- Body/bonnet bolts in stainless steel A2 encased and sealed ensuring full corrosion protection
- ISO top flange according ISO 5210 for electric actuator or manual gearbox assembling
- Accessories: electric actuator or bevel gearbox.



100% MADE IN EUROPE



Fucoli Somepal
FUNDAÇÃO DE FERRO, S. A.

Visit our website at www.fucoli-somepal.pt

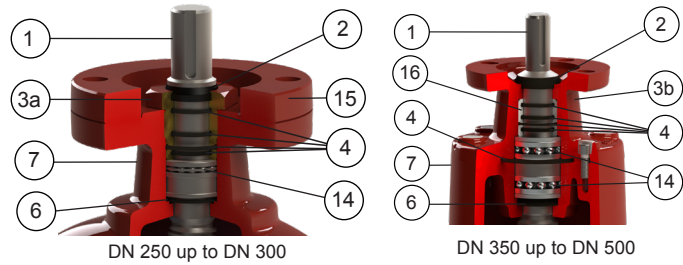
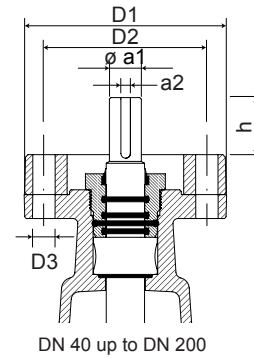
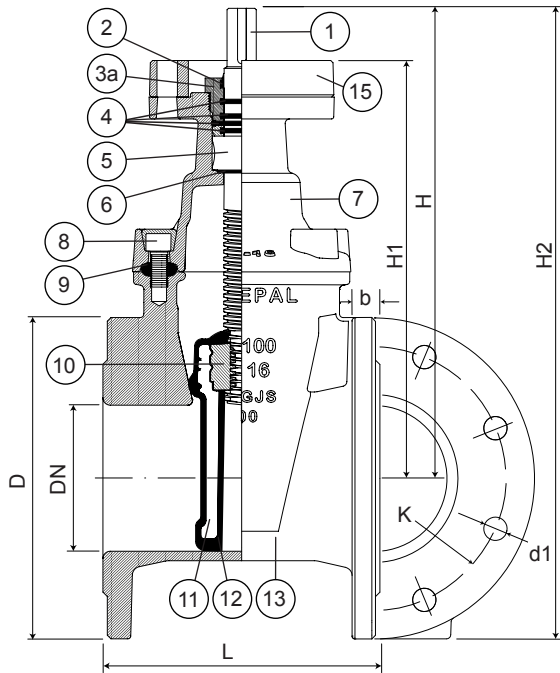
Head office: Estrada de Coselhas, 3000-125 Coimbra – Portugal | Tel.: (+351) 239 490100 | Fax: (+351) 239 490198

Branch office: Rua de Aveiro 50, 3050-420 Pampilhosa – Portugal | Tel.: (+351) 239 490100 | Fax: (+351) 231 949292 | comercial@fucoli-somepal.pt

FLANGED SOFT SEALING GATE VALVE ISO TOP FLANGE S14 3000

prepared for electric actuator
DN 40 - 500 PN10/16

11.102



Component list

| pos. | components | material | standard |
|------|----------------|------------------------------|--------------|
| 1 | Stem | Stainless steel AISI 316L | EN 10088 - 1 |
| 2 | Clearing joint | Elastomer | |
| 3a | Gland | Brass | EN 12164 |
| 3b | Gland | Ductile iron EN-GJS-500-7 | EN 1563 |
| 4 | O-rings | Elastomer NBR | EN 681 - 1 |
| 5 | Stem washer | Brass | EN 12164 |
| 6 | O-ring | Elastomer NBR | EN 681 - 1 |
| 7 | Bonnet | Ductile iron EN-GJS-500-7 | EN 1563 |

| pos. | components | material | standard |
|------|----------------|------------------------------|--------------|
| 8 | Bolts | Stainless steel A2 | EN 10088 - 1 |
| 9 | Bonnet gasket | Elastomer NBR | EN 681 - 1 |
| 10 | Wedge nut | Brass | EN 12164 |
| 11 | Wedge | Ductile iron EN-GJS-500-7 | EN 1563 |
| 12 | Wedge covering | Elastomer NBR | EN 681 - 1 |
| 13 | Body | Ductile iron EN-GJS-500-7 | EN 1563 |
| 14 | Bearing | Steel | ISO 20516 |
| 15 | Gland bush | POM | |

Reference and dimensions

| DN | PN | code | D | L | H | H1 | H2 | K | n° x d1 | b | ISO 5210 flange | D1 | D2 | n° x D3 | ø a1 | a2 | h | turns to open | Kg approx. |
|-----|-------|----------|-----|-----|------|------|------|-----|---------|------|--------------------|-----|-----|---------|------|----|----|------------------|---------------|
| | | | mm | mm | mm | mm | mm | mm | mm | mm | | mm | mm | mm | mm | mm | mm | | |
| 40 | 10/16 | 10738000 | 150 | 140 | 207 | 177 | 282 | 110 | 4 x 19 | 19 | F10 | 125 | 102 | 4 x 12 | 20 | 6 | 30 | 10 | 10 |
| 50 | 10/16 | 10738010 | 165 | 150 | 238 | 208 | 321 | 125 | 4 x 19 | 19 | F10 | 125 | 102 | 4 x 12 | 20 | 6 | 30 | 13 | 12 |
| 60 | 10/16 | 10738020 | 175 | 170 | 250 | 217 | 338 | 135 | 4 x 19 | 19 | F10 | 125 | 102 | 4 x 12 | 20 | 6 | 33 | 13 | 14 |
| 65 | 10/16 | 10738030 | 185 | 170 | 250 | 217 | 343 | 145 | 4 x 19 | 19 | F10 | 125 | 102 | 4 x 12 | 20 | 6 | 33 | 13 | 18 |
| 80 | 10/16 | 10738040 | 200 | 180 | 286 | 253 | 386 | 160 | 8 x 19 | 19 | F10 | 125 | 102 | 4 x 12 | 20 | 6 | 33 | 16 | 19 |
| 100 | 10/16 | 10738050 | 220 | 190 | 325 | 286 | 435 | 180 | 8 x 19 | 19 | F10 | 125 | 102 | 4 x 12 | 20 | 6 | 39 | 20 | 23 |
| 125 | 10/16 | 10738060 | 250 | 200 | 362 | 323 | 487 | 210 | 8 x 19 | 19 | F10 | 125 | 102 | 4 x 12 | 20 | 6 | 39 | 25 | 28 |
| 150 | 10/16 | 10738070 | 285 | 210 | 425 | 384 | 568 | 240 | 8 x 23 | 19 | F10 | 125 | 102 | 4 x 12 | 20 | 6 | 41 | 30 | 36 |
| 200 | 10 | 10738080 | 340 | 230 | 505 | 459 | 683 | 295 | 8 x 23 | 20 | F10 | 125 | 102 | 4 x 12 | 20 | 6 | 46 | 34 | 53 |
| 200 | 16 | 10738085 | 340 | 230 | 505 | 459 | 683 | 295 | 12 x 23 | 20 | F10 | 125 | 102 | 4 x 12 | 20 | 6 | 46 | 34 | 53 |
| 250 | 10 | 10738090 | 400 | 250 | 595 | 545 | 805 | 350 | 12 x 23 | 22 | F14 | 175 | 140 | 4 x 18 | 30 | 8 | 50 | 42 | 77 |
| 250 | 16 | 10738095 | 400 | 250 | 595 | 545 | 805 | 355 | 12 x 28 | 22 | F14 | 175 | 140 | 4 x 18 | 30 | 8 | 50 | 42 | 77 |
| 300 | 10 | 10738100 | 455 | 270 | 670 | 620 | 898 | 400 | 12 x 23 | 24.5 | F14 | 175 | 140 | 4 x 18 | 30 | 8 | 50 | 50 | 107 |
| 300 | 16 | 10738105 | 455 | 270 | 670 | 620 | 898 | 410 | 12 x 28 | 24.5 | F14 | 175 | 140 | 4 x 18 | 30 | 8 | 50 | 50 | 110 |
| 350 | 10 | 10738110 | 505 | 290 | 940 | 875 | 1193 | 460 | 16 x 23 | 24.5 | F14 | 175 | 140 | 4 x 18 | 30 | 8 | 65 | 67 | 220 |
| 350 | 16 | 10738115 | 520 | 290 | 940 | 875 | 1200 | 470 | 16 x 28 | 26.5 | F14 | 175 | 140 | 4 x 18 | 30 | 8 | 65 | 67 | 224 |
| 400 | 10 | 10738120 | 565 | 310 | 940 | 875 | 1223 | 515 | 16 x 28 | 24.5 | F14 | 175 | 140 | 4 x 18 | 30 | 8 | 65 | 67 | 238 |
| 400 | 16 | 10738125 | 580 | 310 | 940 | 875 | 1230 | 525 | 16 x 31 | 28 | F14 | 175 | 140 | 4 x 18 | 30 | 8 | 65 | 67 | 244 |
| 450 | 10 | 10738130 | 615 | 330 | 1120 | 1055 | 1428 | 565 | 20 x 28 | 25.5 | F14 | 175 | 140 | 4 x 18 | 30 | 8 | 65 | 71 | 388 |
| 450 | 16 | 10738135 | 640 | 330 | 1120 | 1055 | 1440 | 585 | 20 x 31 | 30 | F14 | 175 | 140 | 4 x 18 | 30 | 8 | 65 | 71 | 396 |

Electric actuator with RPMs other than those mentioned, on request. For more information on the electric actuator consult the manufacturer's technical documentation.

FLANGED SOFT SEALING GATE VALVE ISO TOP FLANGE S14 3000
 prepared for electric actuator
DN 40 - 500 PN10/16

11.102



continued from previous page

| DN | PN | code | D mm | L mm | H mm | H1 mm | H2 mm | K mm | n° x d1 mm | b mm | ISO 5210 flange | D1 mm | D2 mm | n° x D3 mm | ø a1 mm | a2 mm | h mm | turns to open | Kg approx. |
|-----|----|----------|---------|---------|---------|----------|----------|---------|---------------|---------|--------------------|----------|----------|---------------|------------|----------|---------|------------------|---------------|
| 500 | 10 | 10738140 | 670 | 350 | 1120 | 1055 | 1455 | 620 | 20 x 28 | 26.5 | F14 | 175 | 140 | 4 x 18 | 30 | 8 | 65 | 71 | 412 |
| 500 | 16 | 10738145 | 715 | 350 | 1120 | 1055 | 1478 | 650 | 20 x 34 | 31.5 | F14 | 175 | 140 | 4 x 18 | 30 | 8 | 65 | 71 | 429 |



Fucoli Somepal
 FUNDIÇÃO DE FERRO, S. A.

Visit our website at www.fucoli-somepal.pt

Head office: Estrada de Coselhas, 3000-125 Coimbra – Portugal | Tel.: (+351) 239 490100 | Fax: (+351) 239 490198

Branch office: Rua de Aveiro 50, 3050-420 Pampilhosa – Portugal | Tel.: (+351) 239 490100 | Fax: (+351) 231 949292 | comercial@fucoli-somepal.pt

