

SADDLE THREADED

for abestos ciment and cast iron pipes

DN 50 - DN 300

08.200



Product description

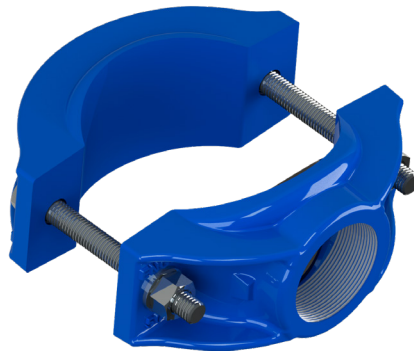
- Saddle threaded for abestos ciment and cast iron pipes for drinking water and neutral liquids
- Service temperature from 0°C (excluding frost) to 70°C

Corrosion protection

- Epoxy powder coating RAL 5005
- Applied internal and external with a minimum coating thickness of 250 µm
- Potable water approved epoxy coating fusion bonded according EN 14901 and GSK (RAL-GZ662) guidelines

Features

- Saddle threaded for abestos ciment class 18 and cast iron pipes
- Easy installation, maintenance free and designed for a long life
- EPDM sealing with drinking water approved, ensuring a perfect seal
- On request possibility of threaded 2", 2 ½", 3 or 4", bolts in stainless steel.



Fucoli Somepal
FUNDAÇÃO DE FERRO, S. A.

Visit our website at www.fucoli-somepal.pt

Head office: Estrada de Coselhas, 3000-125 Coimbra – Portugal | Tel.: (+351) 239 490100 | Fax: (+351) 239 490198

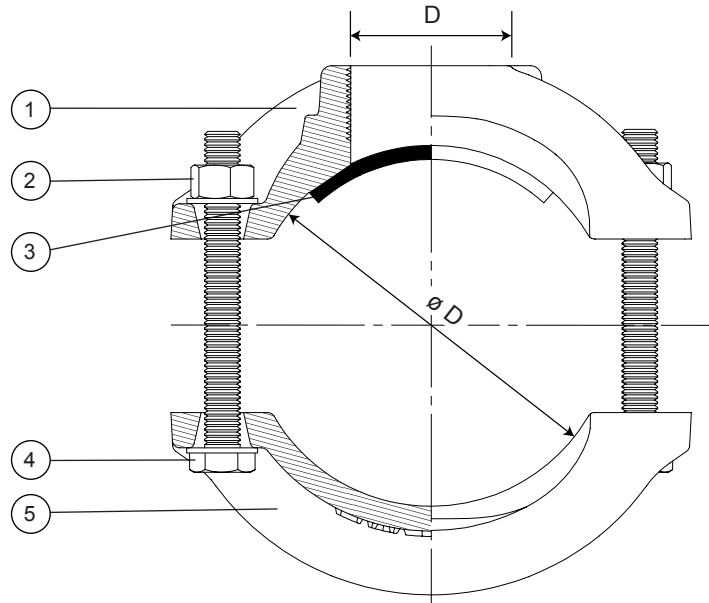
Branch office: Rua de Aveiro 50, 3050-420 Pampilhosa – Portugal | Tel.: (+351) 239 490100 | Fax: (+351) 231 949292 | comercial@fucoli-somepal.pt

SADDLE THREADED

for asbestos cement and cast iron pipes

DN 50 - DN 300

08.200



Component list

pos.	components	material	standard
1	Upper body	Ductile iron EN-GJS-500-7	EN 1563
2	Nuts	Steel zinc plated cl8	ISO 898 - 2
3	Sealing	Elastomer EPDM	EN 681 - 1
4	Bolts	Steel zinc plated cl6.8	ISO 898 - 1
5	Lower body	Ductile iron EN-GJS-500-7	EN 1563

Reference and dimensions

DN	D	code	ø D	Kg
mm	(BSP)		max.	approx.
50	G 1/2"	10303010	71	2
50	G 3/4"	10306010	71	2
50	G 1"	10309010	71	2
50	G 1 1/4"	10312010	71	2
50	G 1 1/2"	10315010	71	2
60	G 1/2"	10303020	83	2
60	G 3/4"	10306020	83	2
60	G 1"	10309020	83	2
60	G 1 1/4"	10312020	83	2
60	G 1 1/2"	10315020	83	2
80	G 1/2"	10303040	101	2
80	G 3/4"	10306040	101	2
80	G 1"	10309040	101	2
80	G 1 1/4"	10312040	101	2
80	G 1 1/2"	10315040	101	2
100	G 1/2"	10315052	124	3
100	G 3/4"	10306050	124	3
100	G 1"	10309050	124	3
100	G 1 1/4"	10312050	124	3
100	G 1 1/2"	10315050	124	3
125	G 1/2"	10303060	151	4
125	G 3/4"	10306060	151	4
125	G 1"	10309060	151	4

DN	D	code	ø D	Kg
mm	(BSP)		max.	approx.
125	G 1 1/4"	10312060	151	4
125	G 1 1/2"	10315060	151	4
150	G 1/2"	10315068	180	4
150	G 3/4"	10306070	180	4
150	G 1"	10309070	180	4
150	G 1 1/4"	10312070	180	4
150	G 1 1/2"	10315070	180	4
200	G 1/2"	10303080	235	8
200	G 3/4"	10306080	235	8
200	G 1"	10309080	235	8
200	G 1 1/4"	10312080	235	8
200	G 1 1/2"	10315080	235	8
250	G 1/2"	10303090	289	10
250	G 3/4"	10306090	289	10
250	G 1"	10309090	289	10
250	G 1 1/4"	10312090	289	10
250	G 1 1/2"	10315090	289	10
300	G 1/2"	10303100	345	10
300	G 1"	10309100	345	11
300	G 1 1/4"	10312100	345	11
300	G 1 1/2"	10315100	345	11



Fucoli Somepal
FUNDAÇÃO DE FERRO, S.A.

Visit our website at www.fucoli-somepal.pt

Head office: Estrada de Coselhas, 3000-125 Coimbra – Portugal | Tel.: (+351) 239 490100 | Fax: (+351) 239 490198

Branch office: Rua de Aveiro 50, 3050-420 Pampilhosa – Portugal | Tel.: (+351) 239 490100 | Fax: (+351) 231 949292 | comercial@fucoli-somepal.pt



100% MADE IN EUROPE