

# EXTENSION SPINDLE AND GUIDE for penstock valve DN 100 - 1200

05.310



## Products description

- Extension spindle for penstock valve
- Extension spindle guide for penstock valve

## Features

- Extension spindle is fixed to the valve through a split stainless steel
- Stems caps in ductile iron (EN-GJS-500-7) with epoxy paint coating
- Extension spindle height according to customer request
- Guide in steel to guide extension spindle
- You should apply an extension spindle guide every three meters in height extension spindle.



**Fucoli Somepal**  
FUNDAÇÃO DE FERRO, S. A.

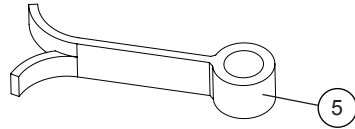
Visit our website at [www.fucoli-somepal.pt](http://www.fucoli-somepal.pt)

**Head office:** Estrada de Coselhas, 3000-125 Coimbra – Portugal | Tel.: (+351) 239 490100 | Fax: (+351) 239 490198

**Branch office:** Rua de Aveiro 50, 3050-420 Pampilhosa – Portugal | Tel.: (+351) 239 490100 | Fax: (+351) 231 949292 | [comercial@fucoli-somepal.pt](mailto:comercial@fucoli-somepal.pt)

# EXTENSION SPINDLE AND GUIDE for penstock valve DN 100 - 1200

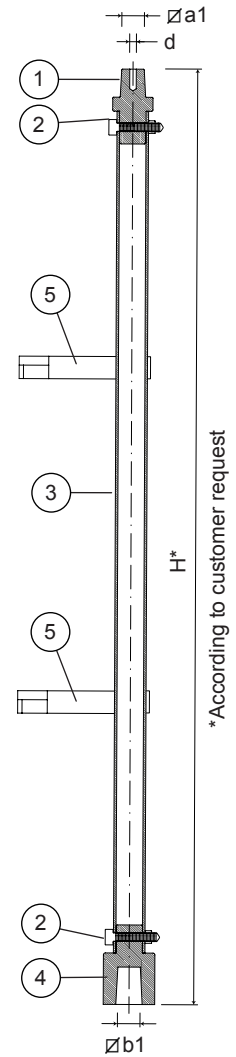
05.310



You should apply an extension spindle guide every 3 meters in height extension spindle

## Component list

pos.	components	material	standard
1	Stem cap male	Ductile iron EN-GJS-500-7	EN 1563
2	Bolt	Steel zinc plated cl. 8.8	DIN 933
3	Square bar	Zinc coated steel ST 37	EN 10025
4	Stem cap female	Ductile iron EN-GJS-500-7	EN 1563
5	Extension spindle guide	Steel	-



## Reference and dimensions

DN	code extension spindle	5 code guide	∅ a1 mm	d mm	∅ b1 mm
100	10705306	10704235	19	M8	17
150	10705310	10704240	19	M8	19
200	10705314	10704245	24	M10	24
250	10705316	10704247	24	M10	24
300	10705318	10704250	27	M10	27
350	10705320	10704255	27	M12	27
400	10705322	10704260	32	M12	32
450	10705324	10704265	32	M12	32
500	10705326	10704275	32	M16	32
600	10705328	10704280	32	M16	32
700	10705330	10704285	41	M16	41
800	10705332	10704290	41	M16	41
900	10705334	10704295	41	M20	41
1000	10705338	10704300	46	M20	46



**Fucoli Somepal**  
FUNDAÇÃO DE FERRO, S.A.

Visit our website at [www.fucoli-somepal.pt](http://www.fucoli-somepal.pt)

Head office: Estrada de Coselhas, 3000-125 Coimbra – Portugal | Tel.: (+351) 239 490100 | Fax: (+351) 239 490198

Branch office: Rua de Aveiro 50, 3050-420 Pampilhosa – Portugal | Tel.: (+351) 239 490100 | Fax: (+351) 231 949292 | [comercial@fucoli-somepal.pt](mailto:comercial@fucoli-somepal.pt)

