

# ROUND MANHOLE COVER

## SERIES LISBOA

### D400

12.106



#### Product description

- Round manhole cover series LISBOA
- Water based black painting

#### Installation location

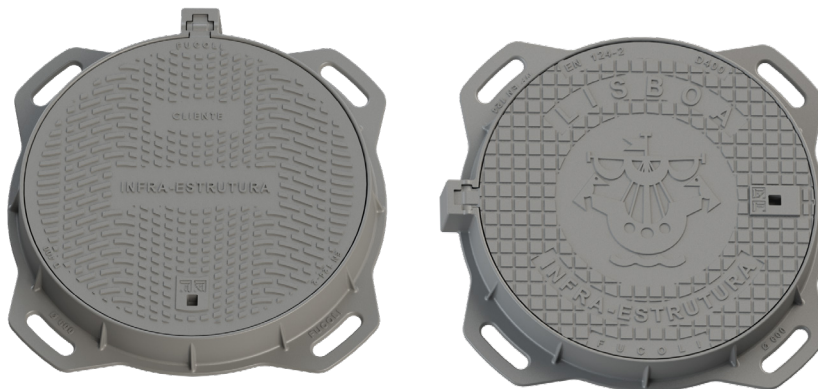
- Class D400 - Carriageways of roads (including pedestrian streets), hard shoulders and parking areas for all types of road vehicles

#### Standards

- Designed according to EN 124-1/2

#### Features

- Ductile cast iron cover and frame (EN-GJS-500-7) with water based black painting
- Cover with non-slip raised pattern according to EN 124-1 designed to allow quick and easy installation
- Frame with 4 rag-bolts for fixation
- Available in 2 models:
  - A. Articulated model:
    - simple hinged manhole with a simple opening at 110° and a safety 90° blocking device
    - hinge with self-cleaning system
    - removable cover when open at 90°
    - cover with handle area for opening using a lever key, pickage or hook
  - B. Not articulated model:
    - cover with two lifting points for easy operation/handling
- Personalization of the cover with inscriptions and logo in high relief with minimal quantities.



100% MADE IN EUROPE



**Fucoli Somepal**  
FUNDAÇÃO DE FERRO, S.A.

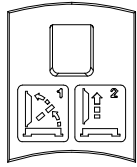
Visit our website at [www.fucoli-somepal.pt](http://www.fucoli-somepal.pt)

**Head office:** Estrada de Coselhas, 3000-125 Coimbra – Portugal | Tel.: (+351) 239 490100 | Fax: (+351) 239 490198

**Branch office:** Rua de Aveiro 50, 3050-420 Pampilhosa – Portugal | Tel.: (+351) 239 490100 | Fax: (+351) 231 949292 | [comercial@fucoli-somepal.pt](mailto:comercial@fucoli-somepal.pt)

# ROUND MANHOLE COVER SERIES LISBOA D400

12.106



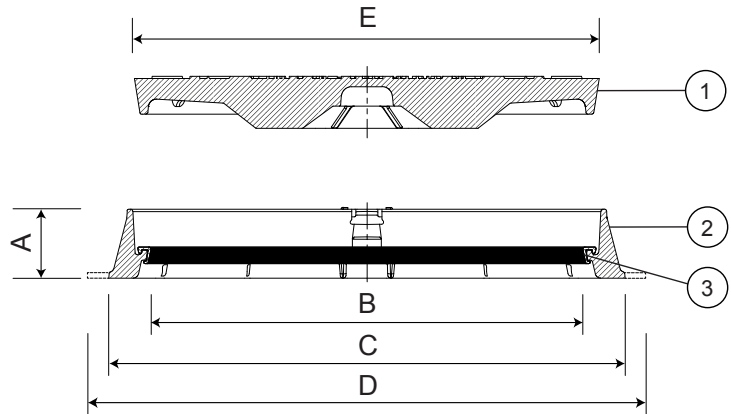
Detail of the handles  
Lisboa articulada



Lisboa articulada  
customized with  
C. M. Lisboa logo



Lisboa não articulada  
customized with  
C. M. Lisboa logo



Safety 90° blocking  
Lisboa articulada

## Component list

pos.	components	material	standard
1	Cover	Ductile iron EN-GJS-500-7	EN 1563
2	Frame	Ductile iron EN-GJS-500-7	EN 1563
3a	Elastic seating anti-noise	Polyethylene	-
3b	Elastic seating anti-noise	Neoprene	-

## Reference and dimensions

pos.	Model - DN - Class	code	Frame				Cover	Weight	
			height mm A	clear opening mm B	∅ external mm C	∅ ext. with stone-bolt mm D	∅ external mm E	Cover kg approx.	Total kg approx.
3a	Lisboa 600 articulada - D400	24B1CI4LAIBZZZZ00AC	100	626	750	900	676	62	91
3b	Lisboa 600 articulada - D400	24B1CI4LAIBZZZZ00AD	100	626	750	900	676	62	91
3a	Lisboa 600 não articulada - D400	24B1CI4LNIBZZZZ00AC	100	626	750	900	676	62	91
3b	Lisboa 600 não articulada - D400	24B1CI4LNIBZZZZ00AD	100	626	750	900	676	62	91



**Fucoli Somepal**  
FUNDAÇÃO DE FERRO, S.A.

Visit our website at [www.fucoli-somepal.pt](http://www.fucoli-somepal.pt)

Head office: Estrada de Coselhas, 3000-125 Coimbra – Portugal | Tel.: (+351) 239 490100 | Fax: (+351) 239 490198

Branch office: Rua de Aveiro 50, 3050-420 Pampilhosa – Portugal | Tel.: (+351) 239 490100 | Fax: (+351) 231 949292 | [comercial@fucoli-somepal.pt](mailto:comercial@fucoli-somepal.pt)

