

ROUND MANHOLE COVER SERIES ESTANQUE D400

12.105



Product description

- Round manhole cover series ESTANQUE
- Water based black painting

Installation location

- Class D400 - Carriageways of roads (including pedestrian streets), hard shoulders and parking areas for all types of road vehicles

Standards

- Designed according to EN 124-1/2

Certifications

- Certificate Certif "D400" DDA - 008/2025

Features

- Ductile cast iron cover and frame (EN-GJS-500-7) with water based black painting
- Cover with non-slip raised pattern according to EN 124-1 designed to allow quick and easy installation
- Cover with a robust conception
- Cover with two lifting points for easy operation/handling
- Elastic seating which assures the cover perfectly fits the frame and also gives stability and silent operating even in high traffic intensity
- O-ring seal that makes the waterlight at 3 bar
- Available in 2 models:
 - A. Series Estanque 600 is supplied with 6 hexagonal bolts for fixing the cover to the frame
 - B. Series Estanque 600 with [P-I] is supplied with 4 hexagonal bolts, plus 2 inviolable bolts that work as an anti-theft system
- All screws are protected by a protective cover
- Personalization of the cover with inscriptions and logo in high relief with minimal quantities.



Fucoli-Somepal
FUNDAÇÃO DE FERRO, S.A.

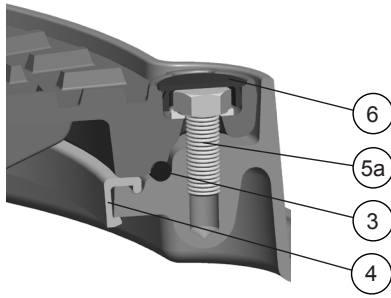
Visit our website at www.fucoli-somepal.pt

Head office: Estrada de Coselhas, 3000-125 Coimbra – Portugal | Tel.: (+351) 239 490100

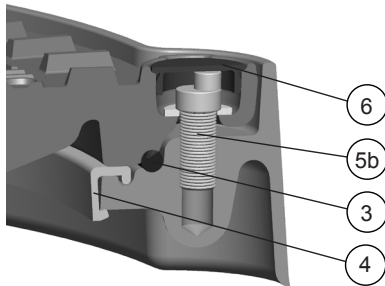
Branch office: Rua de Aveiro 50, 3050-420 Pampilhosa – Portugal | Tel.: (+351) 239 490100 | comercial@fucoli-somepal.pt

ROUND MANHOLE COVER SERIES ESTANQUE D400

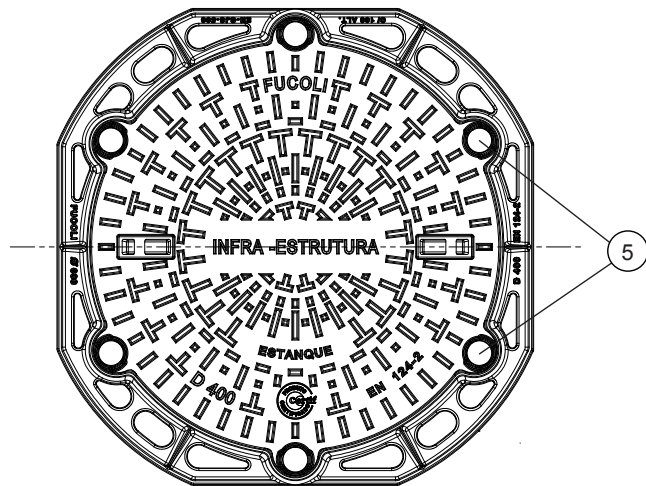
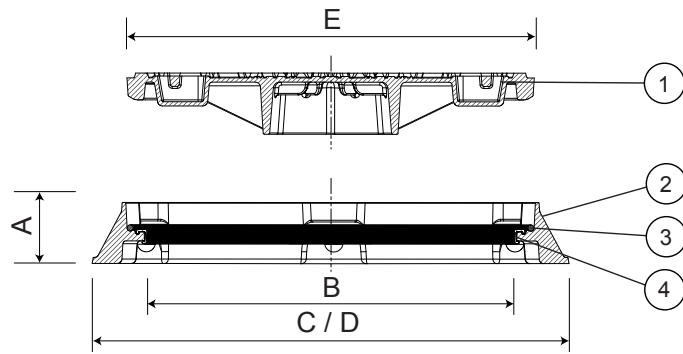
12.105



Detail of stainless steel A2 screw



Detail of inviolable stainless steel A2 screw [P-I]



Component list

pos	components	material	standard
1	Cover	Ductile iron EN-GJS-500-7	EN 1563
2	Frame	Ductile iron EN-GJS-500-7	EN 1563
3	O-ring	Elastomer NBR	EN 681-1
4	Elastic seating anti-noise	Flexible PVC	-
5a	Bolt	Stainless steel A2	EN 10088-1
5b	Inviolable bolt	Stainless steel A2	EN 10088-1
6	Protection cap	Polyethylene (PE-LD)	-

Reference and dimensions

Model - DN - Class	code	Frame				Cover	Weight	
		height mm	clear opening mm	ø external mm	ø ext. with stone-bolt mm	ø external mm	Cover kg	Total kg
		A	B	C	D	E	approx.	approx.
Estanque 600 - D400	24B1CI4QNIBZZZZ00NB	100	600	850	850	650	46	74
Estanque 600 - D400 with [P-I]	24B1CI4QNIBZZZZ00OB	100	600	850	850	650	46	74