

# FLANGED SOFT SEALING GATE VALVE ISO TOP FLANGE S14 3000

prepared for electric actuator  
DN 40 - 600 PN10/16

01.102



## Product description

- Flanged soft sealing gate valve with ISO top flange prepared for electrical actuator series 3000 for drinking water and neutral liquids
- Service temperature from 0°C (excluding frost) to 70°C

## Standards

- Designed according to EN 1074 part 1 & 2 and EN 1171
- Flange drilling to EN 1092-2 PN10/16
- Face-to-face according to EN 558 series 14
- ISO top flange according to ISO 5210

## Tests

- All valves are individually hydrostatically tested according to EN 1074-1/2 and EN 12266-1:
- Seal: 1.1 x PN (in bar); Body: 1.5 x PN (in bar). Operation torque test

## Corrosion protection

- Epoxy powder coating RAL 5005
- Applied internal and external with a minimum coating thickness of 250 µm
- Potable water approved epoxy coating, fusion bonded according to DIN 3476-1, EN 14901-1 and GSK approved

## Approvals

- ACS Potability Certificate 26 ACC NY 096
- GSK Epoxy Coating Certificate GSK-ID:1247 (RAL-GZ 662)

## Features

- Isolation valve approved for drinking water
- Full bore
- Low operating torque
- The valves from DN 250 to DN 300 are equipped with an axial bearing, from DN 350 to DN 600 are equipped with two thrust bearings to ensure reduced operating torque
- Stainless steel stem with rolled threads produced by cold rolling process, which keeps the steel structure and increase its mechanical resistance
- Stem sealing system with 4 O-rings in EPDM
- O-ring stem sealing exchangeable under pressure
- Wedge fully vulcanized with drinking water approved EPDM
- Top of the wedge conceived with “soft stop” system, which acts as an end stop for the fully open valve
- Wedge with brass nut fixed in the wedge core preventing vibration and ensure a long life span
- Wedge and body designed with “monorail” system
- Round EPDM bonnet gasket fixed in a recess, surrounding the bolts, ensuring a perfect seal
- Body/bonnet bolts in stainless steel A2 encased and sealed ensuring full corrosion protection
- ISO top flange according to ISO 5210 for electric actuator or manual gearbox assembling
- Accessories: electric actuator and bevel gearbox
- On request possibility of stem in stainless steel AISI 316L, NBR sealings and wedge nut in different brass alloys.



**Fucoli-Somepal**  
FUNDAÇÃO DE FERRO, S.A.

Visit our website at [www.fucoli-somepal.pt](http://www.fucoli-somepal.pt)

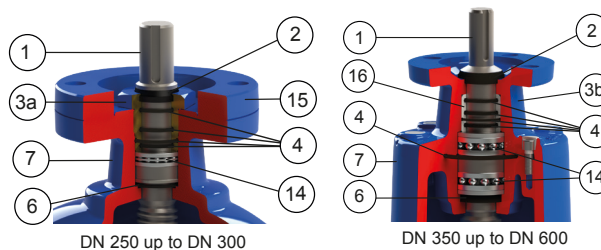
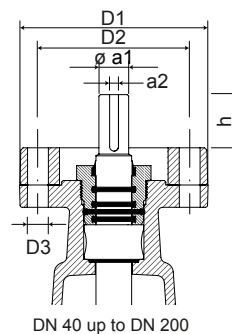
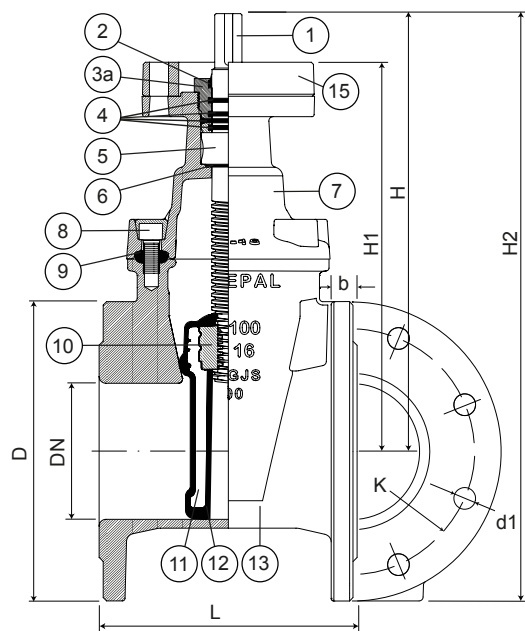
Head office: Estrada de Coselhas, 3000-125 Coimbra – Portugal | Tel.: (+351) 239 490100

Branch office: Rua de Aveiro 50, 3050-420 Pampilhosa – Portugal | Tel.: (+351) 239 490100 | [comercial@fucoli-somepal.pt](mailto:comercial@fucoli-somepal.pt)

# FLANGED SOFT SEALING GATE VALVE ISO TOP FLANGE S14 3000

prepared for electric actuator  
**DN 40 - 600 PN10/16**

01.102



## Component list

pos	components	material	standard
1	Stem	Stainless steel AISI 420	EN 10088-1
2	Clearing joint	Elastomer	-
3a	Gland	Brass DZR CW602N	EN 12164
3b	Gland	Ductile iron EN-GJS-500-7	EN 1563
4	O-rings	Elastomer EPDM	EN 681-1
5	Stem washer	Brass DZR CW602N	EN 12164
6	O-ring	Elastomer EPDM	EN 681-1
7	Bonnet	Ductile iron EN-GJS-500-7	EN 1563
8	Bolts	Stainless steel A2	EN 10088-1

pos	components	material	standard
9	Bonnet gasket	Elastomer EPDM	EN 681-1
10	Wedge nut	Brass DZR CW626N	EN 12164
11	Wedge	Ductile iron EN-GJS-500-7	EN 1563
12	Wedge covering	Elastomer EPDM	EN 681-1
13	Body	Ductile iron EN-GJS-500-7	EN 1563
14	Bearing	Steel	ISO 20516
15	Mounting flange	Ductile iron EN-GJS-500-7	EN 1563
16	Gland bush	POM	-

## Reference and dimensions

DN	PN	code	D	L	H	H1	H2	K	n° x d1	b	ISO 5210	D1	D2	n° x D3	øa1	a2	h	turns to open	Kg aprox.
			mm	mm	mm	mm	mm	mm	mm	mm	flange	mm	mm	mm	mm	mm	mm		
40	10/16	10727500	150	140	207	177	282	110	4 x 19	19	F10	125	102	4 x 12	20	6	30	10	10
50	10/16	10727510	165	150	238	208	321	125	4 x 19	19	F10	125	102	4 x 12	20	6	30	13	12
60	10/16	10727520	175	170	250	216	338	135	4 x 19	19	F10	125	102	4 x 12	20	6	33	13	14
65	10/16	10727530	185	170	250	216	343	145	4 x 19	19	F10	125	102	4 x 12	20	6	33	13	18
80	10/16	10727540	200	180	286	254	386	160	8 x 19	19	F10	125	102	4 x 12	20	6	33	16	19
100	10/16	10727550	220	190	325	283	435	180	8 x 19	19	F10	125	102	4 x 12	20	6	39	20	23
125	10/16	10727560	250	200	362	324	487	210	8 x 19	19	F10	125	102	4 x 12	20	6	39	25	28
150	10/16	10727570	285	210	425	383	568	240	8 x 23	19	F10	125	102	4 x 12	20	6	41	30	36
200	10	10727580	340	230	505	455	683	295	8 x 23	20	F10	125	102	4 x 12	20	6	46	34	53
200	16	10727585	340	230	505	455	683	295	12 x 23	20	F10	125	102	4 x 12	20	6	46	34	53
250	10	10727590	400	250	595	542	805	350	12 x 23	22	F14	175	140	4 x 18	30	8	50	42	77
250	16	10727595	400	250	595	542	805	355	12 x 28	22	F14	175	140	4 x 18	30	8	50	42	77
300	10	10727600	455	270	670	615	898	400	12 x 23	24.5	F14	175	140	4 x 18	30	8	50	50	107
300	16	10727605	455	270	670	615	898	410	12 x 28	24.5	F14	175	140	4 x 18	30	8	50	50	110
350	10	10727610	505	290	940	876	1193	460	16 x 23	24.5	F14	175	140	4 x 18	30	8	65	67	220
350	16	10727615	520	290	940	876	1200	470	16 x 28	26.5	F14	175	140	4 x 18	30	8	65	67	224

continued on next page

All the drawing, technical data, dimensions and weights are not binding. Subject to change. The components may be replaced by equivalent or higher materials without prior notice.

Ed.8 Rev. 10 2/3

**FLANGED SOFT SEALING GATE VALVE ISO TOP FLANGE S14 3000**  
 prepared for electric actuator  
**DN 40 - 600 PN10/16**

01.102



continued from previous page

DN	PN	code	D	L	H	H1	H2	K	n° x d1	b	ISO5210	D1	D2	n° x D3	øa1	a2	h	turns	Kg
			mm	mm	mm	mm	mm	mm	mm	mm	flange	mm	mm	mm	mm	mm	mm	to open	aprox.
400	10	10727620	565	310	940	876	1223	515	16 x 28	24.5	F14	175	140	4 x 18	30	8	65	67	238
400	16	10727625	580	310	940	876	1230	525	16 x 31	28	F14	175	140	4 x 18	30	8	65	67	244
450	10	10727630	615	330	1120	1051	1428	565	20 x 28	25.5	F14	175	140	4 x 18	30	8	65	71	388
450	16	10727635	640	330	1120	1051	1440	585	20 x 31	30	F14	175	140	4 x 18	30	8	65	71	396
500	10	10727640	670	350	1120	1051	1455	620	20 x 28	26.5	F14	175	140	4 x 18	30	8	65	71	412
500	16	10727645	715	350	1120	1051	1478	650	20 x 34	31.5	F14	175	140	4 x 18	30	8	65	71	429
600	10	10727650	780	390	1370	1207	1680	725	20 x 31	30	F16	210	165	4 x 22	40	12	80	86	-
600	16	10727655	840	390	1370	1207	1710	770	20 x 37	36	F16	210	165	4 x 22	40	12	80	86	-