

LARGE TOLERANCE MULTIMATERIAL COUPLING FLANGE ADAPTOR WITH GFIX® GRIP SYSTEM DN 50 - 400 PN10/16

08.401



Product description

- Large tolerance multimaterial coupling flanged adaptor with GFIX® grip system for drinking water and neutral liquids
- Service temperature from 0°C (excluding frost) to 70°C

Standards

- Designed according to EN 14525
- Flange drilling to EN 1092-2 PN10/16

Test according

- EN 14525: Positive internal pressure and negative internal
- EN 545: Positive internal pressure

Corrosion protection

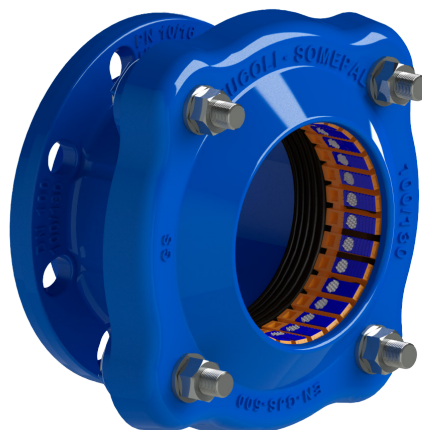
- Epoxy powder coating RAL 5005
- Applied internal and external with a minimum coating thickness of 250 µm
- Potable water approved epoxy coating, fusion bonded according EN 14901 and GSK approved

Approvals

- ACS Potability Certificate 23 ACC NY 127
- GSK Epoxy Coating Certificate GSK-ID:1247 (RAL-GZ 662)

Features

- Large tolerance multimaterial coupling flanged adaptor for drinking water
- GFIX® grip system allows a high-fidelity seal/locking of the assembly without pipe disconnections
- The pipe block is performed by a tempered serrated rivets system mounted on the conical claws that fit and grip causing no damage on the pipe
- Sealing system with drinking water approved EPDM
- The sealing is carried out through a seal with O-rings, mounted on a ring made by the grip support, which will slide until being pressed against the pipe
- Allows a maximum angle deflection of 4°
- Bolts and washers in stainless steel A2 and nuts in stainless steel A4 with anti-friction coated protection
- Bolts ends protected with plastic caps
- Allow the connection between pipes with several external diameters and different materials (PE, uPVC, ductile iron, steel, abestos cement, glass fiber pipes and others) to flanged component
- For PE or uPVC pipe applications, you should be used an insert in stainless steel inside the pipe (ref.15.400)



Fucoli Somepal
FUNDAÇÃO DE FERRO, S. A.

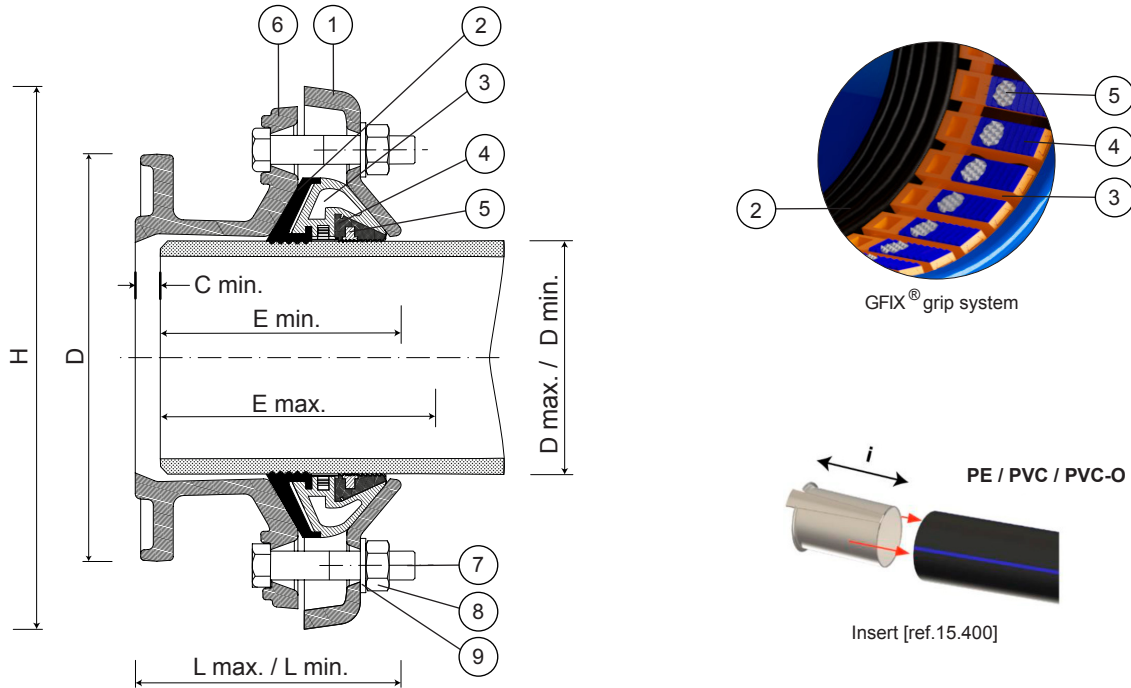
Visit our website at www.fucoli-somepal.pt

Head office: Estrada de Coselhas, 3000-125 Coimbra – Portugal | Tel.: (+351) 239 490100 | Fax: (+351) 239 490198

Branch office: Rua de Aveiro 50, 3050-420 Pampilhosa – Portugal | Tel.: (+351) 239 490100 | Fax: (+351) 231 949292 | comercial@fucoli-somepal.pt

LARGE TOLERANCE MULTIMATERIAL COUPLING FLANGE ADAPTOR WITH GFIX® GRIP SYSTEM DN 50 - 400 PN10/16

08.401




Component list

pos.	components	material	standard
1	Locking ring	Ductile iron EN-GJS-500-7	EN 1563
2	Sealing	Elastomer EPDM	EN 681 - 1
3	Gripper support	POM	-
4	Gripper	POM	-
5	Rivets with milling	Tempered steel cq 15	DIN 1654

pos.	components	material	standard
6	Body	Ductile iron EN-GJS-500-7	EN 1563
7	Bolts	Stainless steel A2	EN 10088 - 1
8	Nuts	Stainless steel A4	EN 10088 - 1
9	Washers	Stainless steel A2	EN 10088 - 1

Reference and dimensions

DN flange	D min./max. mm - mm	PN	code	L min./max. mm - mm	H mm	E min./max. mm - mm	C min. mm	i insert* mm	D flange mm	Bolt		Torque	Kg approx.
50	39 - 52	10/16	10900500	129 - 138	195	90 - 120	15	175	165	3 x M12	19 mm	50 - 70 Nm	5
50	49 - 64	10/16	10900501	128 - 138	197	90 - 120	15	175	165	3 x M12	19 mm	50 - 70 Nm	5
60/65	63 - 83	10/16	10900502	129 - 143	209	105 - 128	15	175	175/185	4 x M12	19 mm	50 - 70 Nm	8
80	78 - 103	10/16	10900503	125 - 143	229	105 - 128	15	175	200	4 x M12	19 mm	50 - 70 Nm	9
80/100	87 - 117	10/16	10900504	121 - 143	243	105 - 128	15	175	200/220	4 x M12	19 mm	50 - 70 Nm	10
100	100 - 130	10/16	10900505	127 - 150	256	105 - 130	20	175	220	4 x M16	24 mm	90 - 120 Nm	10
125	117 - 147	10/16	10900506	127 - 150	273	105 - 130	20	175	250	4 x M16	24 mm	90 - 120 Nm	12
150	152 - 182	10/16	10900507	147 - 168	308	115 - 145	20	175	285	4 x M16	24 mm	90 - 120 Nm	14
200	198 - 228	10/16	10900508	147 - 168	354	115 - 145	20	200	340	4 x M16	24 mm	90 - 120 Nm	18
200	245 - 285	10/16	10900523	251 - 280	424	150 - 180	95	200	340	6 x M16	24 mm	90 - 120 Nm	30
250	245 - 285	10/16	10900509	191 - 220	420	150 - 180	30	225	400	6 x M16	24 mm	90 - 120 Nm	27
300	300 - 340	10/16	10900510	191 - 220	479	150 - 180	30	225	455	8 x M16	24 mm	90 - 120 Nm	35
300	340 - 380	10/16	10900525	271 - 300	519	150 - 180	110	225	455	8 x M16	24 mm	90 - 120 Nm	49
350	340 - 380	10/16	10900511	191 - 220	520	150 - 180	40	225	505/520	8 x M16	24 mm	90 - 120 Nm	42
400	390 - 430	10	10900513	191 - 220	571	150 - 180	40	225	565	8 x M16	24 mm	90 - 120 Nm	49
400	390 - 430	16	10900514	191 - 220	571	150 - 180	40	225	580	8 x M16	24 mm	90 - 120 Nm	52

* recommended for PE, uPVC or PVC-O pipes - insert [ref. 15.400]

Table of tolerances and pipes on next page



TABLE OF TOLERANCES AND PIPES

DN	Tolerances D min. - max. mm - mm	code		Pipes									
		PN10	PN16	HDPE / PE / PVC / PVC-u	Ductile iron		Steel	Asbestos cement					
				ø ext. pipe mm	DN	ø ext. pipe mm	ø ext. pipe mm	DN	Class 6	Class 12	Class 18	Class 24	Class 30
50	39 - 52	10900500	10900500	40 50	-	-	42.4 48.3	-	-	-	-	-	-
50	49 - 64	10900501	10900501	50 63	40	56	48.3 60.3	-	-	-	-	-	-
60/65	63 - 83	10900502	10900502	63 75	50 60 65	66 77 82	76.1	50 60	66 76	66 76	66 76	66 76	66 78
80	78 - 103	10900503	10900503	90	65 80	82 98	88.9 101.6	60 80	- 96	- 96	- 96	- 98	78 -
80/100	87 - 117	10900504	10900504	90 110	80	98	88.9 101.6 114.3	80 100	96 116	96 116	96 -	98 -	104 -
100	100 - 130	10900505	10900505	110 125	100	118	101.6 114.3	80 100	- 116	- 116	- 118	- 122	104 128
125	117 - 147	10900506	10900506	125 140	100 125	118 144	139.7	100 125	- 141	- 141	118 145	122 -	128 -
150	152 - 182	10900507	10900507	160 180	150	170	168.3 177.8	125 150	- 168	- 168	- 174	- 180	157 -
200	198 - 228	10900508	10900508	200 225	200	222	219.1	200	220	222	228	-	-
200	245 - 285	109005091	109005091	250 280	200	274	273	200 250	- 272	- 276	- -	- -	250 -
250	245 - 285	10900509	10900509	250 280	250	274	273	200 250	- 272	- 276	- -	- -	250 -
300	300 - 340	10900510	10900510	315	300	326	323.9	300	324	330	338	-	-
300	340 - 380	109005111	109005111	315	350	378	355.6	300 350	- 376	- -	- -	352 -	366 -
350	343 - 378	10900511	10900511	355	350	378	355.6	300 350	- 376	- -	- -	352 -	366 -
400	390 - 430	10900513	10900514	400	400	429	406.4	350 400	- 428	- -	- -	- -	426 -

