

GIBALT JOINT

for uPVC pipes
DN 50 - 500 PN16

08.700



Product description

- Gibault joint for uPVC pipes for drinking water and neutral liquids
- Service temperature from 0°C (excluding frost) to 70°C

Standards

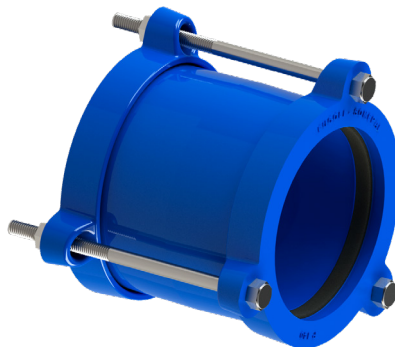
- For uPVC pipes according EN ISO 1452-2

Corrosion protection

- Epoxy powder coating RAL 5005
- Applied internal and external with a minimum coating thickness of 250 µm
- Potable water approved epoxy coating fusion bonded according EN 14901 and GSK (RAL-GZ662) guidelines

Features

- Joint for drinking water
- Allow a uPVC pipe connection, from the same diameter
- EPDM sealing gaskets
- Body and locking rings in EN-GJS-500-7 ductile cast iron, designed to ensure a perfect fit of the seal, ensuring that it does not come loose or twist during installation
- Designed for easy tube insertion, even for large diameters, ensuring simple and quick installation
- This fitting does not guarantee the pipe blocking, they must be anchored by other means
- On request possibility of bolts in stainless steel A2 or A4.



100% MADE IN EUROPE



Fucoli Somepal
FUNDAÇÃO DE FERRO, S. A.

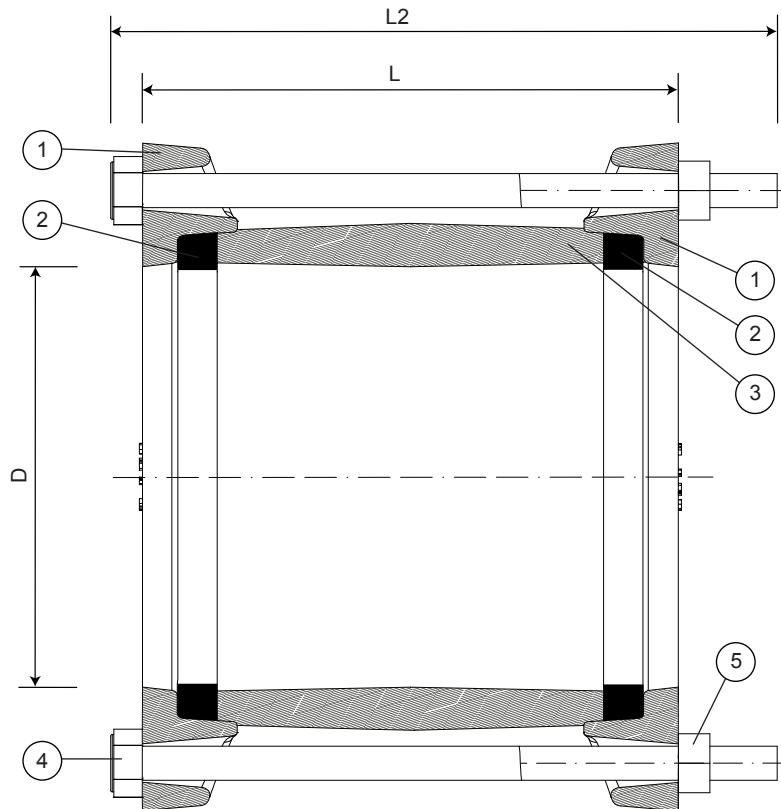
Visit our website at www.fucoli-somepal.pt

Head office: Estrada de Coselhas, 3000-125 Coimbra – Portugal | Tel.: (+351) 239 490100 | Fax: (+351) 239 490198

Branch office: Rua de Aveiro 50, 3050-420 Pampilhosa – Portugal | Tel.: (+351) 239 490100 | Fax: (+351) 231 949292 | comercial@fucoli-somepal.pt

GIBALT JOINT
for uPVC pipes
DN 50 - 500 PN16


08.700



Component list

pos.	components	material	standard
1	Locking rings	Ductile iron EN-GJS-500-7	EN 1563
2	Sealings	Elastomer EPDM	EN 681 - 1
3	Body	Ductile iron EN-GJS-500-7	EN 1563
4	Bolts	Steel zinc plated cl 6.8	ISO 898-1
5	Nuts	Steel zinc plated cl 8	ISO 898-2

Reference and dimensions

DN mm	code	D mm	L mm	Bolt	L2 mm		Kg approx.
50	10442210	52	84	2 x M12	115	19 mm	2
63	10442220	66	114	2 x M12	150	19 mm	2
75	10442230	78	114	2 x M12	150	19 mm	2
90	10442240	93	128	2 x M12	190	19 mm	3
110	10442250	113	142	2 x M12	180	19 mm	6
125	10442260	128	142	2 x M12	180	19 mm	7
140	10442270	143	142	3 x M12	180	19 mm	8
160	10442280	164	142	3 x M12	190	19 mm	10
180	10442290	184	142	3 x M12	190	19 mm	11
200	10442320	204	144	3 x M12	190	19 mm	11
250	10442310	254	164	4 x M16	230	24 mm	20
315	10442122	319	184	5 x M16	250	24 mm	28
400	10442330	406	182	6 x M16	250	24 mm	38
500	10442350	507	180	8 x M16	250	24 mm	59



Fucoli Somepal
FUNDAÇÃO DE FERRO, S.A.

Visit our website at www.fucoli-somepal.pt

Head office: Estrada de Coselhas, 3000-125 Coimbra – Portugal | Tel.: (+351) 239 490100 | Fax: (+351) 239 490198

Branch office: Rua de Aveiro 50, 3050-420 Pampilhosa – Portugal | Tel.: (+351) 239 490100 | Fax: (+351) 231 949292 | comercial@fucoli-somepal.pt

