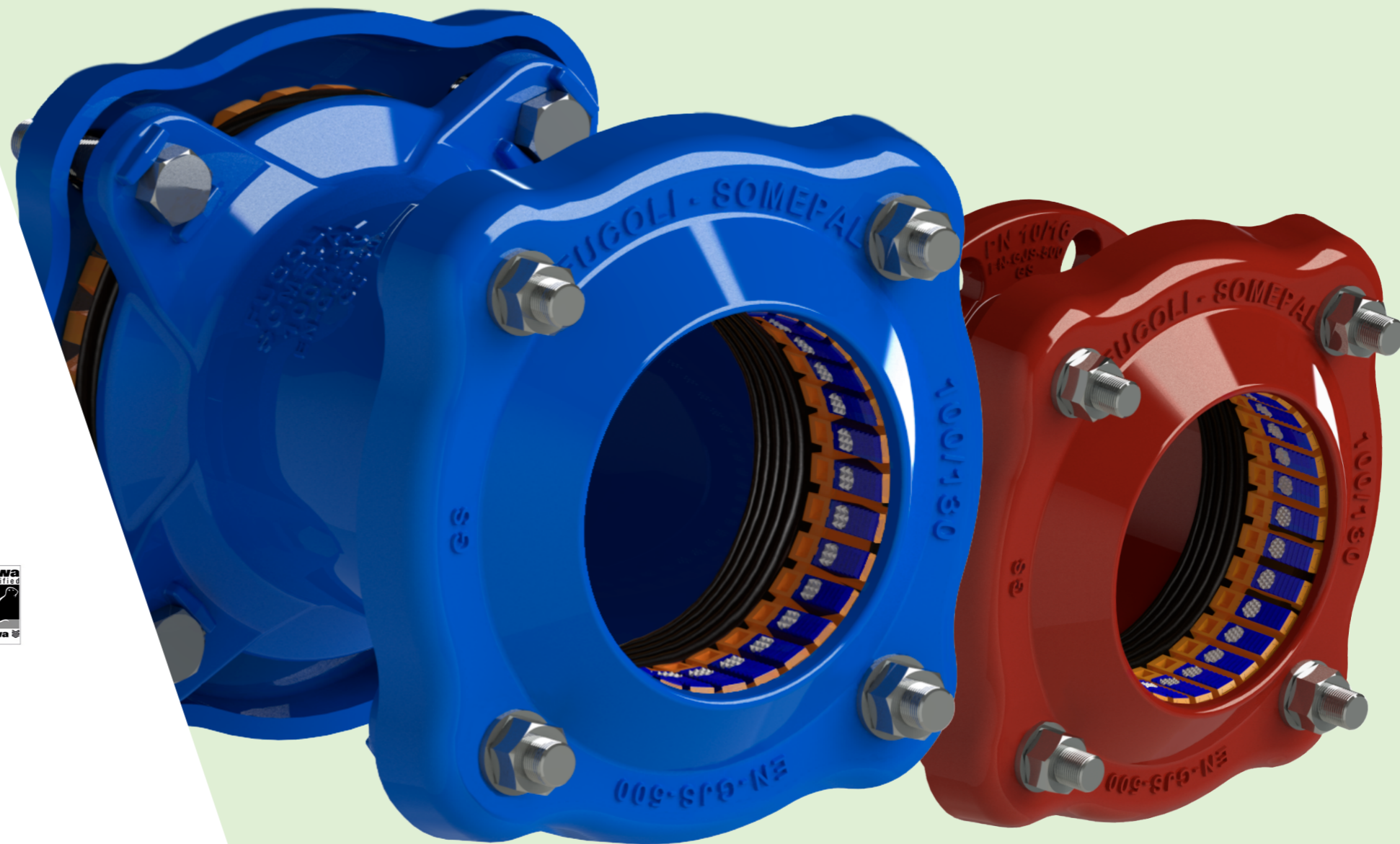




Fucoli Somepal
FUNDIÇÃO DE FERRO, S.A.

MULTIMATERIAL COUPLING GFIX[®] SYSTEM



Fucoli Somepal
FUNDIÇÃO DE FERRO, S.A.

DESDE 1946
SINCE



HEAD OFFICE:

Estrada de Coselhas
3000-125 Coimbra - Portugal
Tel. +351 239 490 100
Gps 40° 13' 12.24" N - 8° 25' 51.26" W
E-mail: sede@fucoli-somepal.pt

BRANCH OFFICE:

Rua de Aveiro, 50
3050-420 Pampilhosa - Portugal
Tel. +351 239 490 100
Gps 40° 21' 02.97" N - 8° 26' 18.32" W
E-mail: filial@fucoli-somepal.pt

MULTIMATERIAL COUPLING

GIX[®] SYSTEM



BENEFITS

- Suitable for all pipe materials
 - Applicable for all conditions under and above ground use
 - Wide range couplings and flange adaptors from DN 50 to DN 400, pipe connection from 39 mm to 430 mm
 - Tolerance range up to 40 mm
 - All range working pressure (PFA) full end load restraint
 - Water and waste water: 16 bar
 - Gas: 5 bar
 - Design and tested according to EN 14525
 - Unique gripping rivet design, ensure optimal restraint on plastic or in rigid pipes, without damaging the pipe wall
-
- Quick, safe and easy installation
 - Reusable
 - No special tools needed for installation
 - Couplings with minimum 8° angularity
 - Available in two different colors, for easy pipeline network identification
 - Blue RAL 5005 for water
 - Red Brown RAL 3011 for waste water
-
- Patented high-quality reliable restrain solution
 - Reduction of leakage, saving resources
 - Stock cost reduction
 - Resicoat[®] epoxy powder coating, GSK approved

LOCKING RING
Ductile iron EN-GJS-500-7

GRIPPER SUPPORT
POM

SEALING
EPDM (water)
NBR (waste water & gas)

RIVETS WITH MILLING
Tempered steel

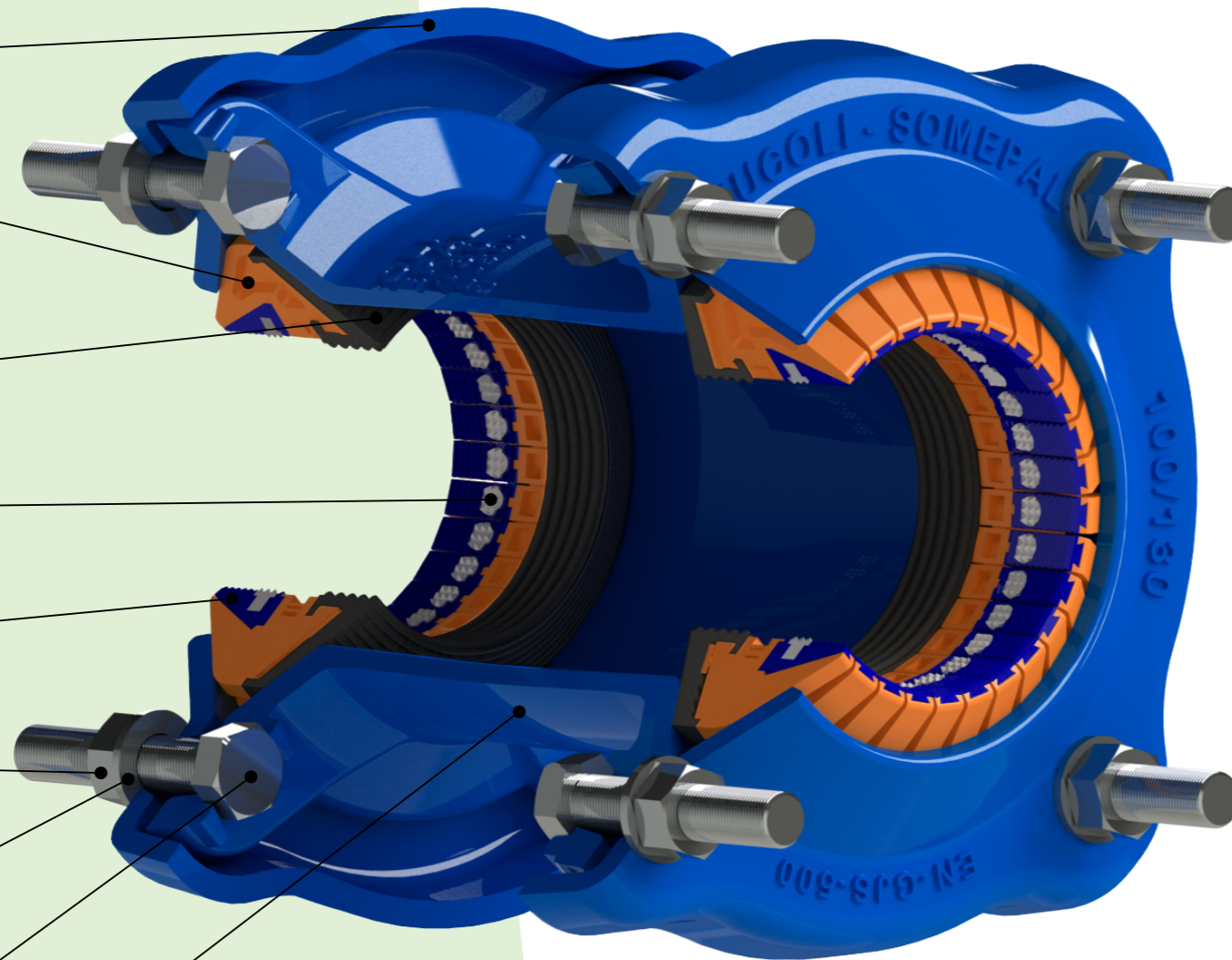
GRIPPER
POM

NUTS
Stainless steel A4

WASHERS
Stainless steel A2

BOLTS
Stainless steel A2

BODY
Ductile iron EN-GJS-500-7



APPROVALS



Coating



EPDM Sealing



Coating



100% MADE IN EUROPE