



MULTIMATERIAL COUPLING **GFIX®**



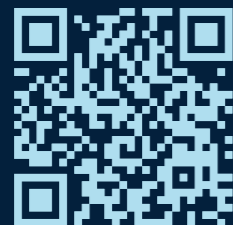
100% MADE IN PORTUGAL

At Fucoli-Somepal, we are committed to preserving our planet's precious natural resources.

Through **innovation** and dedication, we strive to minimise our **carbon and water footprints**, ensuring a more sustainable future for generations to come.

Our ductile iron solutions not only meet industry standards but also incorporate eco-conscious practices, reflecting our ongoing commitment to **environmental sustainability**.

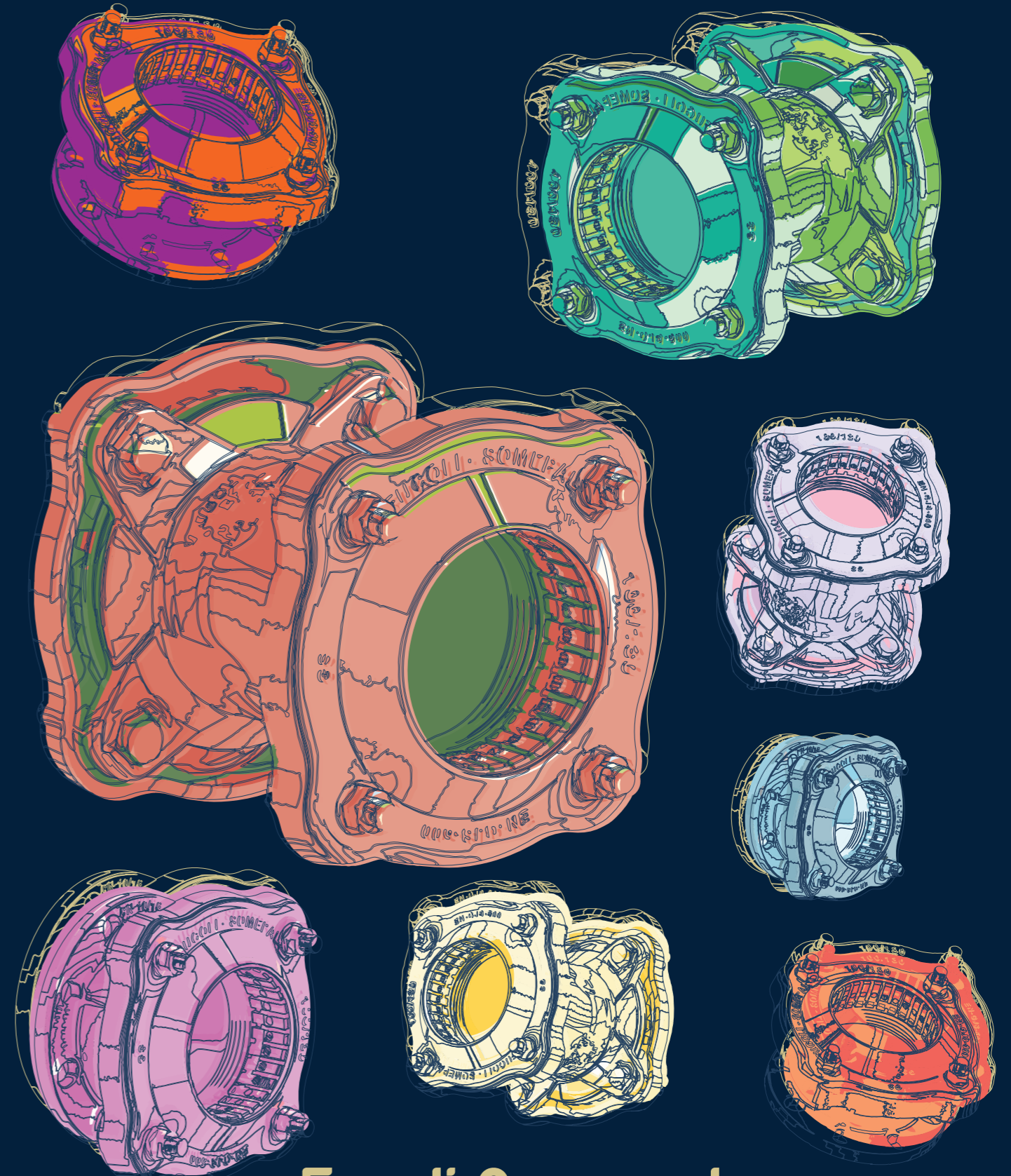
Join us in creating a greener tomorrow!



WWW.FUCOLI-SOMEPAL.PT

E-mail: comercial@fucoli-somepal.pt

Tel: +351 239 490 100

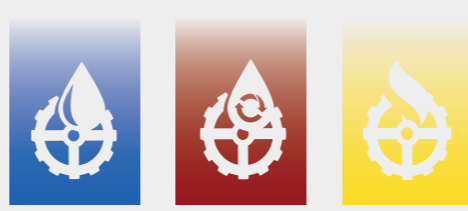


Fucoli-Somepal

FUNDAÇÃO DE FERRO, S.A.



MULTIMATERIAL COUPLING GFIX® SYSTEM



PATENTED PRODUCT



APPROVALS



Designed for secure pipe restraint across multiple pipe materials and outside diameters, the Fucoli-Somepal patented **GFIX®** System combines wide tolerance, reliable sealing and fast installation in a single solution.

LOCKING RING
Ductile iron EN-GJS-500-7

GRIPPER SUPPORT
POM

SEALING
EPDM (water)
NBR (wastewater & gas)

RIVETS WITH MILLING
Tempered steel

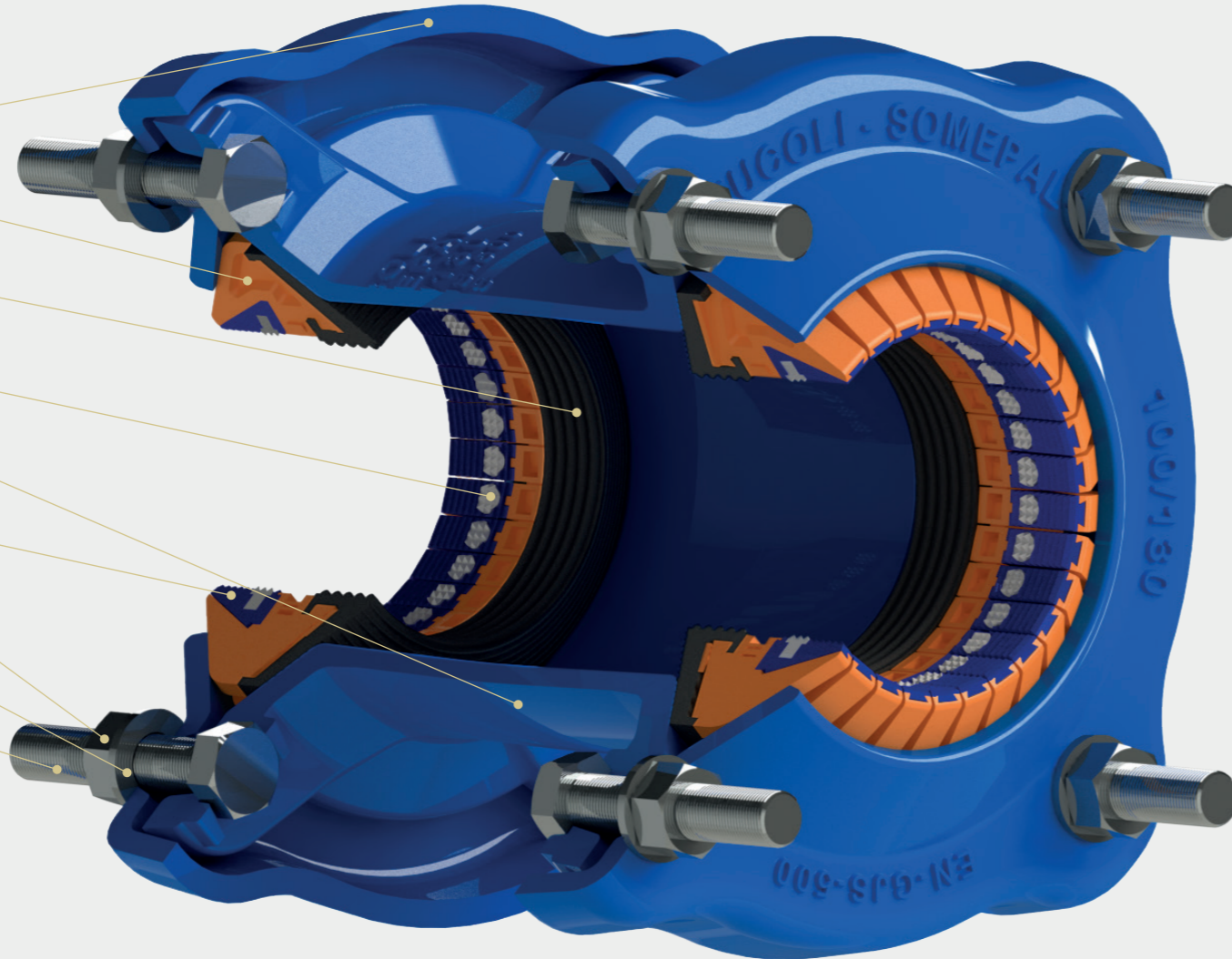
BODY
Ductile iron EN-GJS-500-7

GRIPPER
POM

NUTS
Aço inox A4

WASHERS
Stainless steel A2

BOLTS
Stainless steel A2 Lubo Coated



FEATURES

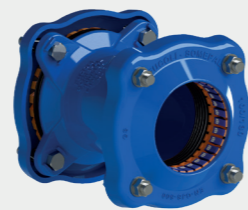
- Size range: **DN 50 to DN 400**
- Pipe OD range: 39 mm to 430 mm
- Tolerance range: Up to 40 mm
- Working pressure (PFA): 16 bar for water and wastewater / 5 bar for gas
- Design standard: EN 14525
- Up to 8° angular deflection for couplings and 4° for flange adaptors.
- High-quality **GSK** approved epoxy coating, 250 µm minimum thickness, for enhanced corrosion protection and long service life.
- Approved for drinking water and gas applications
- Suitable for multiple pipe materials and outside diameters
- Suitable for underground and above-ground installation
- **Full end load restraint** across the full working pressure range
- Secure gripping **without damaging** the pipe outer surface
- Available in two different colours for easy pipeline network identification:
 - **Blue RAL 5005** for water
 - **Red Brown RAL 3011** for wastewater

WHAT TO EXPECT:

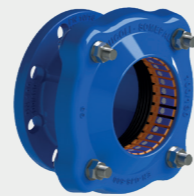
- One solution for **multiple pipe materials** and **outside diameters**
- Secure restraint without damaging the pipe outer surface
- Full end load restraint for reliable long-term performance
- Fast and simple installation with no special tools required
- Reusable design to support lower lifecycle costs
- Wide tolerance range to support stock reduction
- GSK approved epoxy coating for enhanced corrosion protection

AREAS OF USE

- Drinking water networks
- Wastewater networks
- Gas distribution networks
- Extensions and network upgrades
- Maintenance and repair works
- Industrial applications
- Underground and above-ground installations



GFIX® SYSTEM
COUPLING



GFIX® SYSTEM
FLANGE ADAPTOR

The Fucoli-Somepal GFIX® System is a wide tolerance restrained multimaterial coupling and flange adaptor solution developed for water, wastewater and gas networks. Designed to connect pipes of different materials and outside diameters, it delivers secure restraint, reliable sealing and efficient installation in demanding site conditions.



100% PRODUCED IN PORTUGAL
FROM **START** TO **FINISH**