

RECTANGULAR GULLY GRATE

B125, C250 and D400

13.100



Product description

- Rectangular gully grate
- Water based black painting

Installation location

- Class B125 - Footways, pedestrian areas and comparable areas, car parks or car parking decks
- Class C250 - For gully tops, installed in the area of kerbside channels of roads which when measured from the kerb edge, extends a maximum of 0,5 m into the carriageway and a maximum of 0,2 m into the pedestrian area
- Class D400 - Carriageways of roads (including pedestrian streets), hard shoulders and parking areas for all types of road vehicles

Standards

- EN 124-1/2

Features

- Ductile cast iron grate and frame (EN-GJS-500-7) with water based black painting
- Designed to allow quick and easy installation
- Suitable for very long gullies in all types of traffic routes/ roadway crossings
- Allows drainage of the routes
- Several models available with and without frame.



Fucoli Somepal
FUNDAÇÃO DE FERRO, S. A.

Visit our website at www.fucoli-somepal.pt

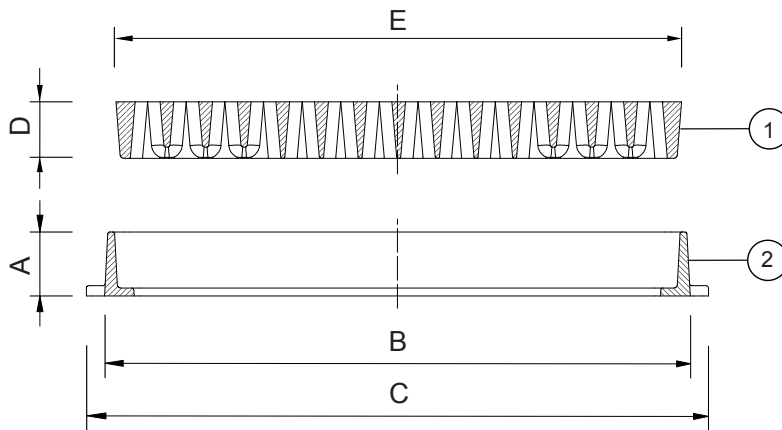
Head office: Estrada de Coselhas, 3000-125 Coimbra – Portugal | Tel.: (+351) 239 490100 | Fax: (+351) 239 490198

Branch office: Rua de Aveiro 50, 3050-420 Pampilhosa – Portugal | Tel.: (+351) 239 490100 | Fax: (+351) 231 949292 | comercial@fucoli-somepal.pt

RECTANGULAR GULLY GRATE

B125, C250 and D400

13.100



Component list

pos.	components	material	standard
1	Grate	Ductile iron EN-GJS-500-7	EN 1563
2	Frame	Ductile iron EN-GJS-500-7	EN 1563

Reference and dimensions

Model	class	Code		Frame			Grate		external with anchoring holes cm ³	Weight	
		Grate without frame	Grate with frame	height mm	external dimension mm	ext. dention with stone-bolt mm	height mm	external dimension mm		without frame kg	with frame kg
40 x 20 x 3	C250	20303015	20306016	40	425 x 230	425 x 255	30	400 x 200	420	9	14
50 x 15 x 2.5	B125	20306035	-	-	-	-	25	500 x 150	290	8	-
50 x 20 x 4	C250	20306022	-	-	-	-	40	500 x 210	395	14	-
52 x 22 x 3.5	B125	20306034	-	-	-	-	35	525 x 220	427	15	-
52 x 22 x 3.5	D400	20306033	-	-	-	-	35	525 x 220	360	17	-
55 x 26 x 3	C250	20306036	20303021	40	575 x 285	575 x 315	31	552 x 262	605	17	22
56 x 33 x 3 TB	B125	20306102	-	-	-	-	30	560 x 330	665	19	-
56 x 33 x 3 TB	C250	20306076	-	-	-	-	30/40	560 x 330	665	24	-
59 x 24 x 3	B125	20306017	20303026	38	613x266	613x296	30	590 x 240	690	11	16
59 x 24 x 3	C250	20306044	20303034	38	613 x 266	613 x 296	30	590 x 240	620	16	21
60 x 26 (Cleen feet carpet)	-	20306050	-	-	-	-	23	605 x 260	-	7	-
60 x 30 x 5	D400	20306059	20303039	80	695 x 398	695 x398	50	602 x 305	790	23	39
60 x 35 x 4	C250	20306057	20303024	50	625 x 375	650 x 400	40	600 x 350	650	22	32
63 x 33 x 3,5 (Type ALM)	B125	20306074	20303049	45	650 x 350	680 x 350	35	630 x 330	1085	11	29
64,5 x 23 x 3	B125	20306079	20303043	37	665 x 254	665 x 282	30	645 x 230	670	15	21
65 x 35 x 3 MARL	D400	20306075	-	-	-	-	30/45	650 x 350	-	36	-
66,5 x 26 x 3	B125	20306111	20304060	39	690 x 280	690 x 315	30	665 x 260	900	13	19
67 x 21 x 4 F3	C250	20306176	20303083	52	702 x 235	702 x 264	45	672 x 210	235	17	25
68 x 20 x 3	B125	20306178	20303084	40	715 x 235	715 x 265	30	680 x 200	600	12	22
69 x 32 x 3.5 (T.Peniche)	B125	20306202	20303101	43	710 x 340	710 x 370	35	692 x 322	1210	22	30
70 x 30 x 3	B125	20306216	203031036	37	723 x 323	723 x 350	30	700 x 300	990	15	21



Fucoli Somepal
FUNDAÇÃO DE FERRO, S.A.

Visit our website at www.fucoli-somepal.pt

Head office: Estrada de Coselhas, 3000-125 Coimbra – Portugal | Tel.: (+351) 239 490100 | Fax: (+351) 239 490198

Branch office: Rua de Aveiro 50, 3050-420 Pampilhosa – Portugal | Tel.: (+351) 239 490100 | Fax: (+351) 231 949292 | comercial@fucoli-somepal.pt



100% MADE IN EUROPE