

# LIGADOR FLANGE MÓVEL

## PONTA LISA

### MOVABLE FLANGED SPIGOT CONNECTION

10.1500

PN 10 / 16 / 25

construção seg. according to	EN 545:2006
Flange	DIN EN 1092-2

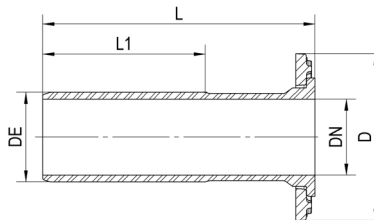
A partir de DN 700 inclusive os ligadores são de flange fixa.

From DN 700 inclusively the spigots are with fixed flange.

componente	material	component	material	norma	standard
corpo e flange	ferro fundido dúctil (EN-GJS-500)	body and flange	ductile iron (EN-GJS-500)	DIN EN 1563	
revestimento anticorrosivo interior e exterior	tinta epóxica potável RESICOAT 9000 R4 BLUE aplicada electrostaticamente com espessura $\geq 250 \mu\text{m}$	coating inside and outside	epoxy paint potable RESICOAT 9000 R4 BLUE applied electrostatically with thickness $\geq 250 \mu\text{m}$	DIN 30677	

**Sob Consulta:**  
Outros diâmetros.

**On request:**  
Other diameters.



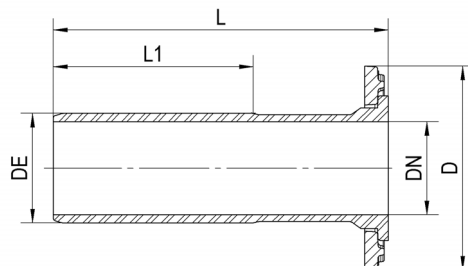
DN	DE	Código - Code			Peso - Weight (Kg)		
		PN 10	PN 16	PN 25	PN 10	PN 16	PN 25
40	56	10090010	10090010	10091010	4.2	4.2	4.2
50	66	10090020	10090020	10091020	5.3	5.3	5.3
60	77	10090030	10090030	10091030	5.9	5.9	5.9
65	82	10090040	10090040	10091040	6.7	6.7	6.7
80	98	10090050	10090050	10091050	8.1	8.1	8.1
100	118	10090060	10090060	10091060	9.8	9.8	10.2
125	144	10090070	10090070	10091070	12.5	12.5	12.9
150	170	10090080	10090080	10091080	16.2	16.2	16.9
200	222	10090090	10090090	10091090	23.4	23.4	23.8
250	274	10090100	10090105	10091100	34.0	34.0	35.3
300	326	10090110	10090115	10091110	49.8	49.8	52.0
350	378	10090120	10090125	10091120	56.0	57.4	63.0
400	429	10090130	10090135	10091130	77.2	79.4	85.8
450	480	10090140	10090145	10091140	85.1	91.0	99.0
500	532	10090150	10090155	10091150	113.0	122.0	126.0
600	635	10090160	10090165	10091160	144.3	154.3	160.6
700	738	10090170	10090175	10091170	188.0	197.0	224.0
800	842	10090180	10090185	10091180	238.0	249.0	290.0
900	945	10090190	10090195	10091190	286.0	297.0	344.0
1000	1048	10090200	10090205	10091200	352.0	374.0	437.0
1200	1255	10090210	10090215	10091210	454.0	503.0	617.0



# LIGADOR FLANGE MÓVEL

## PONTA LISA

### MOVABLE FLANGED SPIGOT CONNECTION



DN	DE	L	L1	D			Ø de furação / nº e Ø dos furos hole Ø / Ø and nº of holes		
				PN 10	PN 16	PN 25	PN 10	PN 16	PN 25
40	56	335	200	150	150	150	110Ø - 4 x 19Ø	110Ø - 4 x 19Ø	110Ø - 4 x 19Ø
50	66	340	200	165	165	165	125Ø - 4 x 19Ø	125Ø - 4 x 19Ø	125Ø - 4 x 19Ø
60	77	345	200	175	175	175	135Ø - 4 x 19Ø	135Ø - 4 x 19Ø	135Ø - 8 x 19Ø
65	82	345	200	185	185	185	145Ø - 4 x 19Ø	145Ø - 4 x 19Ø	145Ø - 8 x 19Ø
80	98	350	215	200	200	200	160Ø - 8 x 19Ø	160Ø - 8 x 19Ø	160Ø - 8 x 19Ø
100	118	360	215	220	220	235	180Ø - 8 x 19Ø	180Ø - 8 x 19Ø	190Ø - 8 x 23Ø
125	144	370	220	250	250	270	210Ø - 8 x 19Ø	210Ø - 8 x 19Ø	220Ø - 8 x 28Ø
150	170	380	225	285	285	300	240Ø - 8 x 23Ø	240Ø - 8 x 23Ø	250Ø - 8 x 28Ø
200	222	400	230	340	340	360	295Ø - 8 x 23Ø	295Ø - 12 x 23Ø	310Ø - 12 x 28Ø
250	274	420	240	400	400	425	350Ø - 12 x 23Ø	355Ø - 12 x 28Ø	370Ø - 12 x 31Ø
300	326	440	250	455	455	485	400Ø - 12 x 23Ø	410Ø - 12 x 28Ø	430Ø - 16 x 31Ø
350	378	460	260	505	520	555	460Ø - 16 x 23Ø	470Ø - 16 x 28Ø	490Ø - 16 x 34Ø
400	429	480	270	565	580	620	515Ø - 16 x 28Ø	525Ø - 16 x 31Ø	550Ø - 16 x 37Ø
450	480	500	280	615	640	670	565Ø - 20 x 28Ø	585Ø - 20 x 31Ø	600Ø - 20 x 37Ø
500	532	520	290	670	715	730	620Ø - 20 x 28Ø	650Ø - 20 x 34Ø	660Ø - 20 x 37Ø
600	635	560	310	780	840	845	725Ø - 20 x 31Ø	770Ø - 20 x 37Ø	770Ø - 20 x 41Ø
700	738	600	330	895	910	960	840Ø - 24 x 31Ø	840Ø - 24 x 37Ø	875Ø - 24 x 44Ø
800	842	600	330	1015	1025	1085	950Ø - 24 x 34Ø	950Ø - 24 x 41Ø	990Ø - 24 x 50Ø
900	945	600	330	1115	1125	1185	1050Ø - 28 x 34Ø	1050Ø - 28 x 41Ø	1090Ø - 28 x 50Ø
1000	1048	600	330	1230	1255	1320	1160Ø - 28 x 37Ø	1170Ø - 28 x 44Ø	1210Ø - 28 x 57Ø
1200	1255	600	330	1455	1485	1530	1380Ø - 32 x 41Ø	1390Ø - 50 x 50Ø	1420Ø - 32 x 57Ø

Homologações - Homologation
<b>Revestimento - Coating</b>
- INETI (Portugal)
- KIWA (Holanda - Netherlands)
- WRAS (Reino Unido - United Kingdom)
- CARSO (França - France)
- HYGIENE Institut Ruhrgebiets (Alemanha - Germany)

Sendo um dos principais objectivos da nossa empresa o desenvolvimento e aperfeiçoamento dos nossos produtos, reservamo-nos no direito de fornecer quaisquer outros que possam diferir ligeiramente dos descritos e ilustrados nesta publicação.

Being one of our aims a constant development of our products, the characteristics of described material may be altered without prior warning.