

ALL FLANGED CROSSHEAD

Flanged fittings

DN 40 - 1000 PN10/16/25

10.1300



Product description

- All flanged crosshead for drinking water and neutral liquids

Standards

- Designed according to EN 545
- Flange drilling to EN 1092-2 PN10/16/25

Corrosion protection

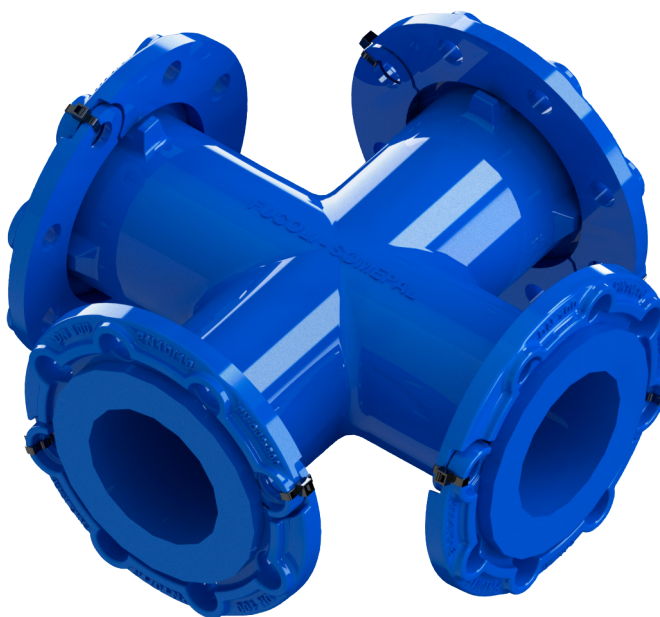
- Epoxy powder coating RAL 5005
- Applied internal and external with a minimum coating thickness of 250 µm
- Potable water approved epoxy coating fusion bonded according to EN 14901 and GSK (RAL-GZ662) guidelines

Approvals

- ACS Potability Certificate 22 ACC NY 023

Features

- Fitting approved for drinking water
- Body and flange in ductile cast iron EN-GJS-500-7
- Fast and easy to install
- Accessory with movable flanges up to DN 600 (inclusive) and fixed flanges from DN 700.



Fucoli Somepal
FUNDAÇÃO DE FERRO, S. A.

Visit our website at www.fucoli-somepal.pt

Head office: Estrada de Coselhas, 3000-125 Coimbra – Portugal | Tel.: (+351) 239 490100 | Fax: (+351) 239 490198

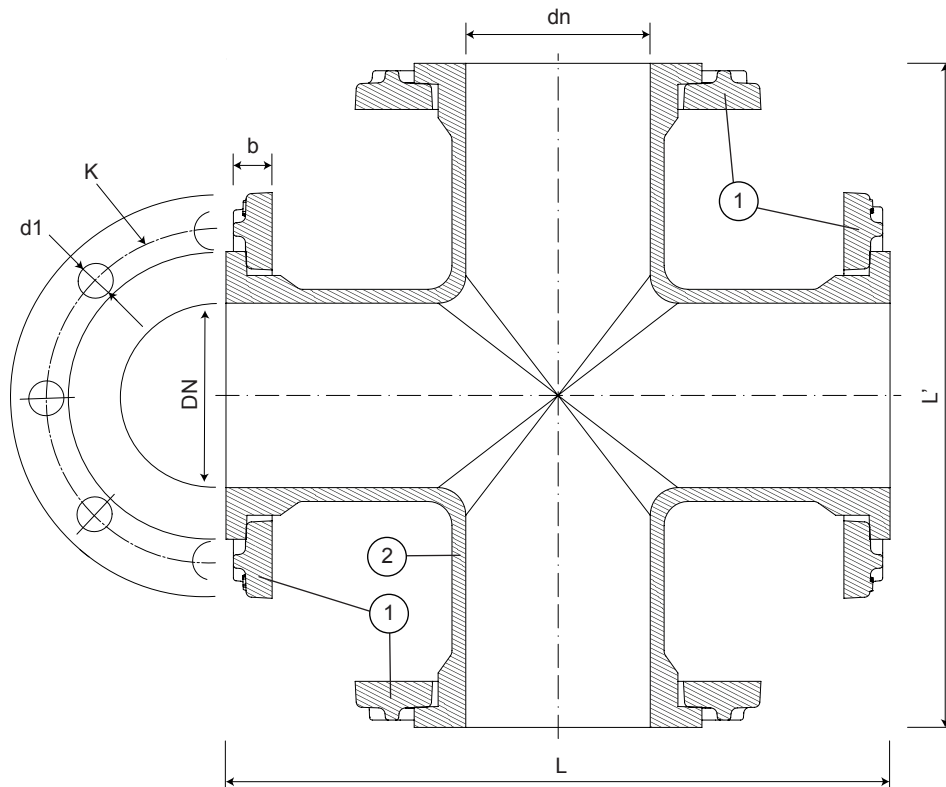
Branch office: Rua de Aveiro 50, 3050-420 Pampilhosa – Portugal | Tel.: (+351) 239 490100 | Fax: (+351) 231 949292 | comercial@fucoli-somepal.pt

ALL FLANGED CROSSHEAD

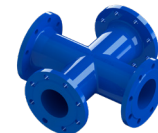
Flanged fittings

DN 40 - 1000 PN10/16/25

10.1300



DN 40 to DN 600



DN 700 to DN 1000

Component list

pos.	components	material	standard
1	Flange	Ductile iron EN-GJS-500-7	EN 1563
2	Body	Ductile iron EN-GJS-500-7	EN 1563

Reference and dimensions

DN x dn	PN	code	L mm	L' mm	K mm	n° x d1 mm	b mm	Flange movable / fixed	Kg approx.
40 x 40	10/16	10040000	255	255	110	4 x 19	21	movable	11
40 x 40	25	10043000	255	255	110	4 x 19	21	movable	11
50 x 50	10/16	10040010	280	280	125	4 x 19	21	movable	13
50 x 50	25	10043010	280	280	125	4 x 19	21	movable	13
60 x 60	10/16	10040020	305	300	135	4 x 19	21	movable	15
60 x 60	25	10043020	305	305	135	8 x 19	21	movable	15
65 x 65	10/16	10040027	305	300	145	4 x 19	21	movable	16
65 x 65	25	10043027	305	305	145	8 x 19	21	movable	16
80 x 80	10/16	10040030	330	330	160	8 x 19	21	movable	19
80 x 80	25	10043030	330	330	160	8 x 19	21	movable	19
100 x 100	10/16	10040040	360	360	180	8 x 19	21	movable	23
100 x 100	25	10043040	360	360	190	8 x 23	21	movable	25
125 x 125	10/16	10040045	400	400	210	8 x 19	21	movable	31
125 x 125	25	10043045	400	400	220	8 x 28	21	movable	31
150 x 150	10/16	10040050	440	440	240	8 x 23	21	movable	37
150 x 150	25	10043050	440	440	250	8 x 28	21	movable	39
200 x 200	10/16	10040060	520	520	295	8 - 12 x 23	22	movable	57
200 x 200	25	10043060	520	520	310	12 x 28	22	movable	58
250 x 250	10	10040070	600	600	350	12 x 23	26	movable	81
250 x 250	16	10040071	600	600	355	12 x 28	26	movable	81
250 x 250	25	10043171	600	600	370	12 x 31	26	movable	90

continued on next page

All the drawing, technical data, dimensions and weights are not binding. Subject to change. The components may be replaced by equivalent or higher materials without prior notice.

Ed.8 Rev. 1 2/3

ALL FLANGED CROSSHEAD

Flanged fittings

DN 40 - 1000 PN10/16/25

10.1300

continued from previous page

DN x dn	PN	code	L mm	L' mm	K mm	n° x d1 mm	b mm	Flange movable / fixed	Kg approx.
300 x 300	10	10040080	680	680	400	12 x 23	32	movable	118
300 x 300	16	10040081	680	680	410	12 x 28	32	movable	118
300 x 300	25	10040082	680	680	430	16 x 31	32	movable	126
350 x 350	10	10040090	760	760	460	16 x 23	36	movable	158
350 x 350	16	10040091	760	760	470	16 x 28	36	movable	165
350 x 350	25	10043216	760	760	490	16 x 34	36	movable	177
400 x 400	10	10040100	840	840	515	16 x 28	38	movable	208
400 x 400	16	10040101	840	840	525	16 x 31	38	movable	211
400 x 400	25	10043252	840	840	550	16 x 37	38	movable	223
450 x 450	10	10040157	920	920	565	20 x 28	38	movable	280
450 x 450	16	10040159	920	920	585	20 x 31	38	movable	295
450 x 450	25	10043257	920	920	600	20 x 37	38	movable	320
500 x 500	10	10040288	1000	1000	620	20 x 28	40	movable	360
500 x 500	16	10040290	1000	1000	650	20 x 34	40	movable	380
500 x 500	25	10043288	1000	1000	660	20 x 37	40	movable	410
600 x 600	10	10040316	1165	1165	725	20 x 31	46	movable	510
600 x 600	16	10040318	1165	1165	770	20 x 37	46	movable	535
600 x 600	25	10043316	1165	1165	770	20 x 41	46	movable	570
700 x 700	10	10109150	1200	1200	840	24 x 31	32.5	fixed	770
700 x 700	16	10109151	1200	1200	840	24 x 37	39.5	fixed	-
700 x 700	25	10109152	1200	1200	875	24 x 44	46.5	fixed	-
800 x 800	10	10109160	1350	1350	950	24 x 34	35	fixed	950
800 x 800	16	10109161	1350	1350	950	24 x 41	43	fixed	-
800 x 800	25	10109162	1350	1350	990	24 x 50	51	fixed	-
900 x 900	10	10109170	1500	1500	1050	28 x 34	37.5	fixed	1270
900 x 900	16	10109171	1500	1500	1050	28 x 41	46.5	fixed	-
900 x 900	25	10109173	1500	1500	1090	28 x 50	55.5	fixed	-
800 x 800	10	10109160	1350	1350	950	24 x 34	35	fixed	950
800 x 800	16	10109161	1350	1350	950	24 x 41	43	fixed	-
800 x 800	25	10109162	1350	1350	990	24 x 50	51	fixed	-
900 x 900	10	10109170	1500	1500	1050	28 x 34	37.5	fixed	1270
900 x 900	16	10109171	1500	1500	1050	28 x 41	46.5	fixed	-
900 x 900	25	10109173	1500	1500	1090	28 x 50	55.5	fixed	-
1000 x 1000	10	10109180	1650	1650	1160	28 x 37	40	fixed	1500
1000 x 1000	16	10109181	1650	1650	1170	28 x 44	50	fixed	-
1000 x 1000	25	10109183	1650	1650	1210	28 x 57	60	fixed	-

**Fucoli Somepal**
FUNDIÇÃO DE FERRO, S. A.Visit our website at www.fucoli-somepal.pt

Head office: Estrada de Coselhas, 3000-125 Coimbra – Portugal | Tel.: (+351) 239 490100 | Fax: (+351) 239 490198

Branch office: Rua de Aveiro 50, 3050-420 Pampilhosa – Portugal | Tel.: (+351) 239 490100 | Fax: (+351) 231 949292 | comercial@fucoli-somepal.pt

100% MADE IN EUROPE