

STEP FOR MANHOLE, MARINE ZONE AND DRINKING WATER

15.200



Product description

- Step for manhole , marine zone and drinking water

Standards

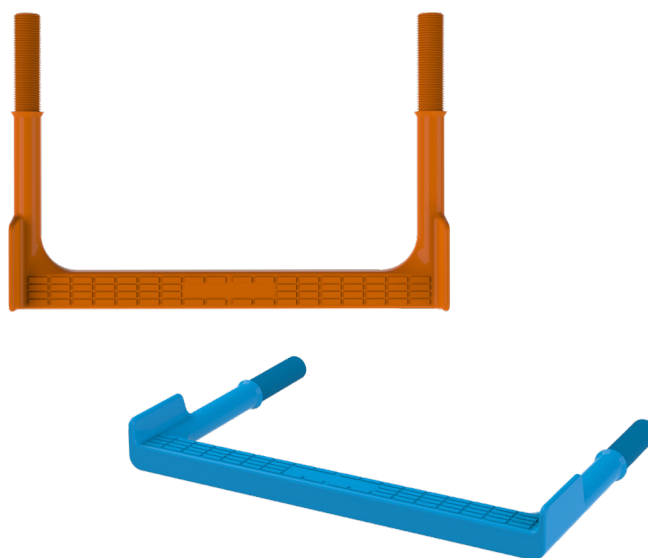
- CE marking according EN 13101:2002

Tests

- All the tests and CE marking declaration conformity, according the European EN 13101 according with the Regulation (EU) n.º 305/2011 laying down harmonised conditions for the marketing of construction products

Features

- Dosage grooves for chemical plugs
- Step for curve and straight manhole
- Ergonomic conception with non slide tread
- Crash limit for a perfect fittings
- Manhole step application: manholes, harness Wells, dockd, ports, collectors, sewer, terraces, swimming pools, basements, factories, silos, etc.
- Marine step application: salt water, docks, hydroelectric power stations, nuclear power stations, etc.
- Drinking wate step aplication



Fucoli-Somepal
FUNDICÃO DE FERRO, S.A.

Visit our website at www.fucoli-somepal.pt

Head office: Estrada de Coselhas, 3000-125 Coimbra – Portugal | Tel.: (+351) 239 490100 | Fax: (+351) 239 490198

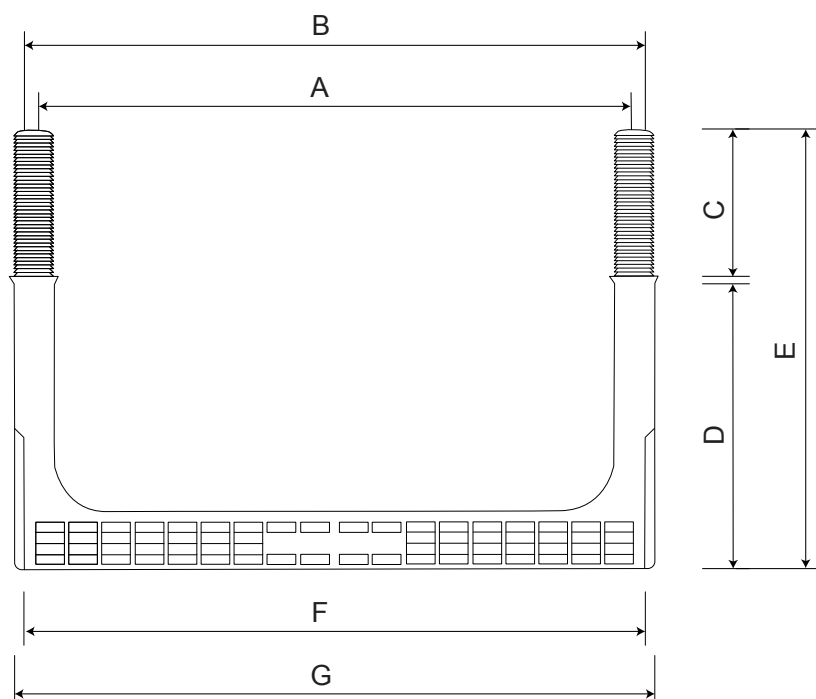
Branch office: Rua de Aveiro 50, 3050-420 Pampilhosa – Portugal | Tel.: (+351) 239 490100 | Fax: (+351) 231 949292 | comercial@fucoli-somepal.pt

Ed.8 Rev. 1
04-2025

Being one of the main objectives of our company the development and satisfaction of our customers, we reserve the right to update, change or replace the specifications presented without prior notice.

STEP FOR MANHOLE, MARINE ZONE AND DRINKING WATER

15.200



Manhole details



Marine details

Component list

code	model	material interior	material outside
20207010	Manhole step	Steel with \varnothing 12 mm (B-500)	Recovering non recycled polypropylene copolymer 100% virgin
20207020	Marine step	Stainless steel AISI 304 with \varnothing 12 mm	Recovering non recycled polypropylene copolymer protected by a master that prevents detrioration in the long term due to sinlidht and ultraviolet
20207030	Drinking water step	Stainless steel AISI 316 with \varnothing 12 mm	Recovering non recycled polypropylene copolymer 100% virgin

Reference and dimensions

code	model	A mm	B mm	C mm	D mm	E mm	F mm	G mm	Kg approx.
20207010	Manhole step	330	357	80	160	240	340	352	1
20207020	Marine step *	330	357	80	160	240	340	352	1
20207030	Drinking water step *	330	357	80	160	240	340	352	1

* Supply in multiples of 25 units



Fucoli-Somepal
FUNDAÇÃO DE FERRO, S. R. L.

Visit our website at www.fucoli-somepal.pt

Head office: Estrada de Coselhas, 3000-125 Coimbra – Portugal | Tel.: (+351) 239 490100 | Fax: (+351) 239 490198

Branch office: Rua de Aveiro 50, 3050-420 Pampilhosa – Portugal | Tel.: (+351) 239 490100 | Fax: (+351) 231 949292 | comercial@fucoli-somepal.pt



100% MADE IN EUROPE

All drawings, technical data, dimensions and weights are not binding. Subject to change. The components may be replaced by equivalent or higher materials without prior notice.

Ed.8 Rev. 1