

90° SOCKET BEND FOR PE

Fitting for PE pipe

25 - 63 PN16

10.6400



Product description

- 90° bend with tensile resistant socket joints for PE pipes for drinking water and neutral liquids
- Service temperature from 0°C (excluding frost) to 70°C

Standards

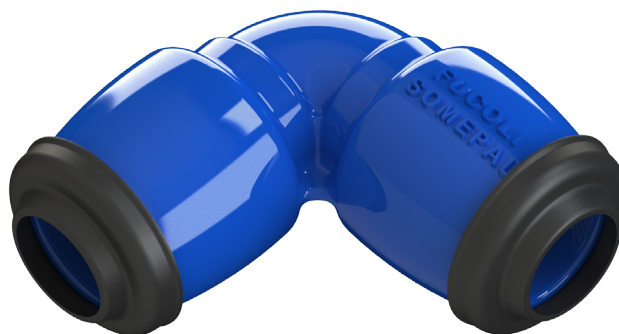
- Socket for PE pipes PE 80 and PE 100 according EN 12201 and DIN 8074

Corrosion protection

- Epoxy powder coating RAL 5005
- Applied internal and external with a minimum coating thickness of 250 µm
- Potable water approved epoxy coating, fusion bonded according EN 14901 and GSK (RAL-GZ662) guidelines

Features

- Fitting for drinking water
- Body in ductile cast iron (EN-GJS-500-7)
- Sockets with EPDM double lip seal ring and POM tension ring ensuring a perfect sealing and PE pipe restraint
- Fitting to assemble PE pipes connection
- On request possibility of sealing in NBR.



100% MADE IN EUROPE



Fucoli Somepal
FUNDAÇÃO DE FERRO, S. A.

Visit our website at www.fucoli-somepal.pt

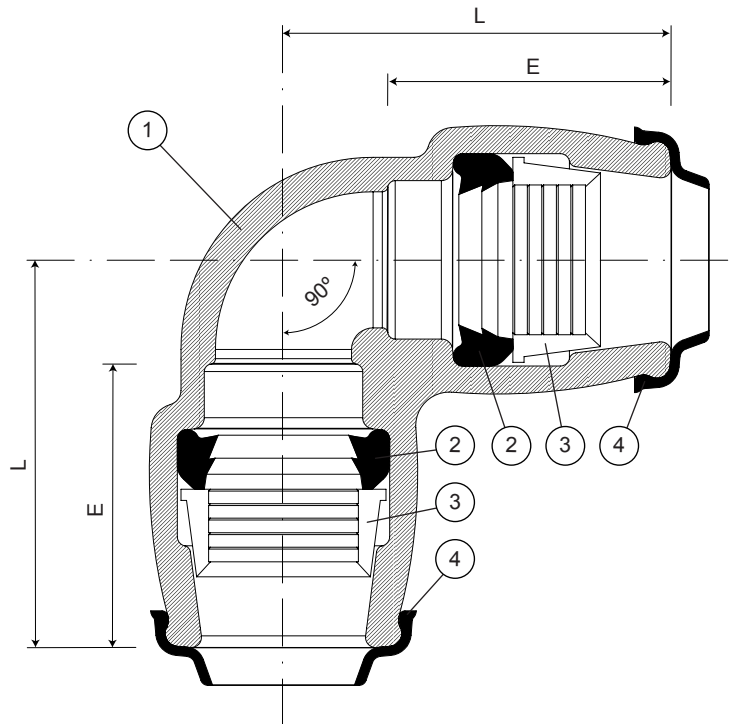
Head office: Estrada de Coselhas, 3000-125 Coimbra – Portugal | Tel.: (+351) 239 490100 | Fax: (+351) 239 490198

Branch office: Rua de Aveiro 50, 3050-420 Pampilhosa – Portugal | Tel.: (+351) 239 490100 | Fax: (+351) 231 949292 | comercial@fucoli-somepal.pt

90° SOCKET BEND FOR PE

Fitting for PE pipe
25 - 63 PN16

10.6400



Component list

pos.	components	material	standard
1	Body	Ductile iron EN-GJS-500-7	EN 1563
2	Lip seal ring	Elastomer EPDM	EN 681 - 1
3	Tension ring	POM	EN 10088 - 1
4	Protection cap	Elastomer EPDM	EN 681 - 1

Reference and dimensions

\varnothing	code	L	E	Kg
ext. PE		mm	mm	approx.
25 / 25	10001850	77	58	1
32 / 32	10001855	91	68	2
40 / 40	10001860	105	77	3
50 / 50	10001865	130	96	4
63 / 63	10001870	150	110	5



Fucoli Somepal
FUNDAÇÃO DE FERRO, S.A.

Visit our website at www.fucoli-somepal.pt

Head office: Estrada de Coselhas, 3000-125 Coimbra – Portugal | Tel.: (+351) 239 490100 | Fax: (+351) 239 490198

Branch office: Rua de Aveiro 50, 3050-420 Pampilhosa – Portugal | Tel.: (+351) 239 490100 | Fax: (+351) 231 949292 | comercial@fucoli-somepal.pt



100% MADE IN EUROPE