

SURFACE BOX ROUND, TRIANGULAR, SQUARE, HEXAGONAL OR OCTAGONAL

05.500



Product description

- Surface Box available in several models round, triangular, square, hexagonal or octagonal

Features

- Body and cover of ductile iron (EN-GJS-500-7) with water based black painting
- Chain of zinc coated steel (if applicable)
- Base of body with support surface that facilitates the settlement reducing the risks of unevenness
- Cap with tear for easy opening
- On request personalization with logo ou inscription insertion.



Fucoli Somepal
FUNDAÇÃO DE FERRO, S. A.

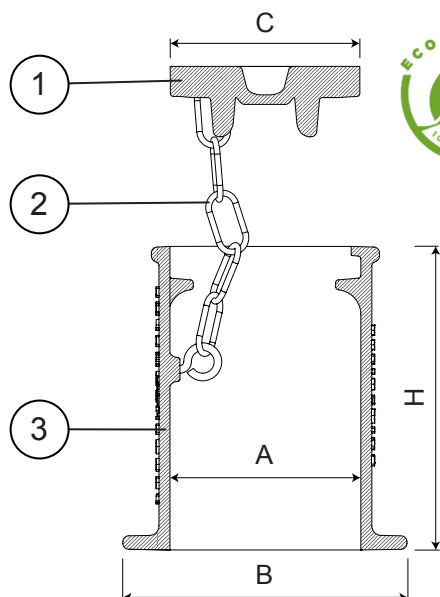
Visit our website at www.fucoli-somepal.pt

Head office: Estrada de Coselhas, 3000-125 Coimbra – Portugal | Tel.: (+351) 239 490100 | Fax: (+351) 239 490198

Branch office: Rua de Aveiro 50, 3050-420 Pampilhosa – Portugal | Tel.: (+351) 239 490100 | Fax: (+351) 231 949292 | comercial@fucoli-somepal.pt

SURFACE BOX ROUND, TRIANGULAR, SQUARE, HEXAGONAL OR OCTAGONAL

05.500



Round
Epal



Round
Báltico



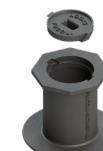
Triangular
Figueira da Foz



Square
Epal



Hexagonal
Epal



Octagonal
Fucoli

Component list

pos.	components	material	standard
1	Cover	Ductile iron EN-GJS-500-7	EN 1563
2	Chain	Zinc coated steel	-
3	Body	Ductile iron EN-GJS-500-7	EN 1563

Reference and dimensions

model	type	chain Yes / No	code	H mm	A clear opening mm	B mm	C cover mm	Kg approx.
Round	Epal	N	24B1AJ0PNNBAGZZZ00PA*	160	102	150	89	4
Round	Epal	Y	24B1AJ0PNNBAGZZZ00RA*	160	102	150	89	4
Round	Fucoli	N	24B1AL0FNFBAGZZZ00PA*	165	100	200	110	5
Round	Fucoli	Y	24B1AL0FNFBAGZZZ00RA*	165	100	200	110	5
Round	Coimbra	Y	24B1AL0CNWBAGZZZ00RA*	255	90	160	106	6
Round	Figueira da Foz	Y	24B1AL0ONNBAGZZZ00RA*	165	118	220	106	7
Round	Báltico	N	24B1AN0BNQBZZZZ00PA	190	108	208	123	7
Triangular	Epal	N	24H1AJ0PNNBAGZZZ00PA*	160	102	150	89	4
Triangular	Epal	Y	24H1AJ0PNNBAGZZZ00RA*	160	102	150	89	4
Triangular	Fucoli	N	24H1AL0FNFBAGZZZ00PA*	165	100	200	110	6
Triangular	Fucoli	Y	24H1AL0FNFBAGZZZ00RA*	165	100	200	110	6
Triangular	Figueira da Foz	Y	24H1AL0ONNBAGZZZ00RA*	165	118	220	106	7
Square	Epal	N	24F1AJ0PNNBAGZZZ00PA*	160	102	150	89	4
Square	Epal	Y	24F1AJ0PNNBAGZZZ00RA*	160	102	150	89	4
Square	Fucoli	N	24F1AL0FNFBAGZZZ00PA*	165	100	200	110	6
Square	Fucoli	Y	24F1AL0FNFBAGZZZ00RA*	165	100	200	110	6
Square	Báltico	N	24F1AN0BNQBZZZZ00PA	190	108	180	128	7
Hexagonal	Epal	N	24I1AJ0PNNBAGZZZ00PA*	160	102	150	89	4
Hexagonal	Epal	Y	24I1AJ0PNNBAGZZZ00RA*	160	102	150	89	4
Hexagonal	Epal Grande	Y	24I1AL0PNWBAGEPL00RA**	290	102	281	108	13
Hexagonal	Figueira da Foz	Y	24I1AL0ONNBAGZZZ00RA*	165	118	220	106	7
Octagonal	Fucoli	N	24J1AL0FNFBAGZZZ00PA*	165	100	200	110	6
Octagonal	Fucoli	Y	24J1AL0FNFBAGZZZ00RA*	165	100	200	110	6

* Inscription "ÁGUAS" on the Surface Box cover

** Inscription "ÁGUAS EPAL" on the Surface Box cover



Fucoli Somepal
FUNDAÇÃO DE FERRO, S.N.

Visit our website at www.fucoli-somepal.pt

Head office: Estrada de Coselhas, 3000-125 Coimbra – Portugal | Tel.: (+351) 239 490100 | Fax: (+351) 239 490198

Branch office: Rua de Aveiro 50, 3050-420 Pampilhosa – Portugal | Tel.: (+351) 239 490100 | Fax: (+351) 231 949292 | comercial@fucoli-somepal.pt



100% MADE IN EUROPE