

FLANGE CEGA

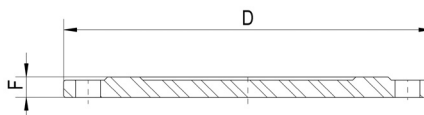
BLIND FLANGE

09.400

PN 10 / 16 / 25

Flange	DIN EN 1092-2
---------------	----------------------

componente	material	component	material	norma	standard
flange	ferro fundido dúctil (EN-GJS-500)	flange	ductile iron (EN-GJS-500)	DIN EN 1563	
revestimento	tinta epóxica potável RESICOAT 9000 R4 BLUE aplicada electrostaticamente com espessura $\geq 250 \mu\text{m}$	coating	epoxy paint potable RESICOAT 9000 R4 BLUE applied electrostatically with thickness $\geq 250 \mu\text{m}$	DIN 30677	

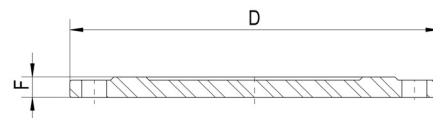


DN	Código - code			D			F		
	PN 10	PN 16	PN 25	PN 10	PN 16	PN 25	PN 10	PN 16	PN 25
40	10122001	10122001	10122001	150	150	150	19.0	19.0	19.0
50	10122031	10122031	10122031	165	165	165	19.0	19.0	19.0
60	10122014	10122014	10124120	175	175	175	19.0	19.0	19.0
65	10122014	10122014	10124120	185	185	185	19.0	19.0	19.0
80	10122018	10122018	10124124	200	200	200	19.0	19.0	19.0
100	10122013	10122013	10124128	220	220	235	19.0	19.0	19.0
125	10122314	10122314	10124140	250	250	270	19.0	19.0	19.0
150	10122012	10122012	10124145	285	285	300	19.0	19.0	20.0
200	10122023	10122021	10124150	340	340	360	20.0	20.0	22.0
250	10124159	10122026	10124160	395	400	425	22.0	22.0	24.5
300	10124171	10124173	10124170	445	455	485	24.5	24.5	27.5
350	10122082	10122085	10124174	505	520	555	24.5	26.5	30.0
400	10122101	10122102	10124176	565	580	620	24.5	28.0	32.0
450	10122103	10122104	10124180	615	640	670	25.5	30.0	34.5
500	10122108	10122106	10124109	670	715	730	26.5	31.5	36.5
600	10122109	10122110	10124182	780	840	845	30.0	36.0	42.0
700	10122112	10122113	10124184	895	910	960	32.5	39.5	46.5
800	10122114	10122115	10124186	1015	1025	1085	35.0	43.0	51.0
900	10122116	10122117	10124188	1115	1125	1185	37.5	46.5	55.5
1000	10122118	10122119	10124190	1230	1255	1320	40.0	50.0	60.0



FLANGE CEGA

BLIND FLANGE



DN	Ø de furação / n° e Ø dos furos hole Ø / Ø and n° of holes			peso (Kg) weight		
	PN 10	PN 16	PN 25	PN 10	PN 16	PN 25
40	110Ø - 4 x 19Ø	110Ø - 4 x 19Ø	110Ø - 4 x 19Ø	3.4	-	-
50	125Ø - 4 x 19Ø	125Ø - 4 x 19Ø	125Ø - 4 x 19Ø	2.6	-	-
60	135Ø - 4 x 19Ø	135Ø - 4 x 19Ø	135Ø - 8 x 19Ø	3.7	-	-
65	145Ø - 4 x 19Ø	145Ø - 4 x 19Ø	145Ø - 8 x 19Ø	3.7	-	-
80	160Ø - 8 x 19Ø	160Ø - 8 x 19Ø	160Ø - 8 x 19Ø	3.2	-	-
100	180Ø - 8 x 19Ø	180Ø - 8 x 19Ø	190Ø - 8 x 23Ø	4.7	-	-
125	210Ø - 8 x 19Ø	210Ø - 8 x 19Ø	220Ø - 8 x 28Ø	6.0	-	-
150	240Ø - 8 x 23Ø	240Ø - 8 x 23Ø	250Ø - 8 x 28Ø	8.1	-	-
200	295Ø - 8 x 23Ø	295Ø - 12 x 23Ø	310Ø - 12 x 28Ø	11.0	10.0	-
250	350Ø - 12 x 23Ø	355Ø - 12 x 28Ø	370Ø - 12 x 31Ø	20.0	18.0	-
300	400Ø - 12 x 23Ø	410Ø - 12 x 28Ø	430Ø - 16 x 31Ø	23.5	-	-
350	460Ø - 16 x 23Ø	470Ø - 16 x 28Ø	490Ø - 16 x 34Ø	-	-	-
400	515Ø - 16 x 28Ø	525Ø - 16 x 31Ø	550Ø - 16 x 37Ø	37.0	-	-
450	565Ø - 20 x 28Ø	585Ø - 20 x 31Ø	600Ø - 20 x 37Ø	45.8	-	-
500	620Ø - 20 x 28Ø	650Ø - 20 x 34Ø	660Ø - 20 x 37Ø	80.0	-	-
600	725Ø - 20 x 31Ø	770Ø - 20 x 37Ø	770Ø - 20 x 41Ø	85.0	-	-
700	840Ø - 24 x 31Ø	840Ø - 24 x 37Ø	875Ø - 24 x 44Ø	-	-	-
800	950Ø - 24 x 34Ø	950Ø - 24 x 41Ø	990Ø - 24 x 50Ø	-	-	-
900	1050Ø - 28 x 34Ø	1050Ø - 28 x 41Ø	1090Ø - 28 x 50Ø	-	-	-
1000	1160Ø - 28 x 37Ø	1170Ø - 28 x 44Ø	1210Ø - 28 x 57Ø	-	-	-

Homologações - Homologation

Revestimento - Coating

- INETI (Portugal)
- KIWA (Holanda - Netherlands)
- WRAS (Reino Unido - United Kingdom)
- CARSO (França-France)
- HYGIENE Institut Ruhrgebiets (Alemanha - Germany)